

# iWay

Omni-Insurance Installation and  
Configuration Guide for Loqate®  
Address Validation

Version 3.12

Active Technologies, EDA, EDA/SQL, FIDEL, FOCUS, Information Builders, the Information Builders logo, iWay, iWay Software, Parlay, PC/FOCUS, RStat, Table Talk, Web390, WebFOCUS, WebFOCUS Active Technologies, and WebFOCUS Magnify are registered trademarks, and DataMigrator and Hyperstage are trademarks of Information Builders, Inc.

Adobe, the Adobe logo, Acrobat, Adobe Reader, Flash, Adobe Flash Builder, Flex, and PostScript are either registered trademarks or trademarks of Adobe Systems Incorporated in the United States and/or other countries.

Due to the nature of this material, this document refers to numerous hardware and software products by their trademarks. In most, if not all cases, these designations are claimed as trademarks or registered trademarks by their respective companies. It is not this publisher's intent to use any of these names generically. The reader is therefore cautioned to investigate all claimed trademark rights before using any of these names other than to refer to the product described.

Copyright © 2020, by Information Builders, Inc. and iWay Software. All rights reserved. Patent Pending. This manual, or parts thereof, may not be reproduced in any form without the written permission of Information Builders, Inc.

# Contents

---

- Preface ..... 5**
  - Documentation Conventions .....5
  - Related Publications ..... 6
  - Customer Support ..... 6
  - Help Us to Serve You Better .....6
  - User Feedback ..... 8
  - iWay Software Training and Professional Services ..... 8
- 1. Support for Address Validation .....11**
  - Installing Loqate on Windows ..... 11
  - Installing Loqate on Linux .....28



# Preface

This documentation describes how to install and configure Loqate® to enable address validation operations.

## How This Manual Is Organized

This manual includes the following chapters:

Chapter/Appendix		Contents
1	Support for Address Validation	Describes how to install and configure Loqate to enable address validation operations.

## Documentation Conventions

The following table lists and describes the documentation conventions that are used in this manual.

Convention	Description
<code>THIS TYPEFACE</code> or <code>this typeface</code>	Denotes syntax that you must type exactly as shown.
<i>this typeface</i>	Represents a placeholder (or variable), a cross-reference, or an important term. It may also indicate a button, menu item, or dialog box option that you can click or select.
<u>underscore</u>	Indicates a default setting.
Key + Key	Indicates keys that you must press simultaneously.
{ }	Indicates two or three choices. Type one of them, not the braces.
	Separates mutually exclusive choices in syntax. Type one of them, not the symbol.
...	Indicates that you can enter a parameter multiple times. Type only the parameter, not the ellipsis (...).

Convention	Description
.	Indicates that there are (or could be) intervening or additional commands.
.	
.	

Related Publications

Visit our Technical Documentation Library at <http://documentation.informationbuilders.com>. You can also contact the Publications Order Department at (800) 969-4636.

Customer Support

Do you have questions about this product?

Join the Focal Point community. Focal Point is our online developer center and more than a message board. It is an interactive network of more than 3,000 developers from almost every profession and industry, collaborating on solutions and sharing every tips and techniques. Access Focal Point at <http://forums.informationbuilders.com/eve/forums>.

You can also access support services electronically, 24 hours a day, with InfoResponse Online. InfoResponse Online is accessible through our website, <http://www.informationbuilders.com>. It connects you to the tracking system and known-problem database at the Information Builders support center. Registered users can open, update, and view the status of cases in the tracking system and read descriptions of reported software issues. New users can register immediately for this service. The technical support section of [www.informationbuilders.com](http://www.informationbuilders.com) also provides usage techniques, diagnostic tips, and answers to frequently asked questions.

Call Information Builders Customer Support Services (CSS) at (800) 736-6130 or (212) 736-6130. Customer Support Consultants are available Monday through Friday between 8:00 A.M. and 8:00 P.M. EST to address all your questions. Information Builders consultants can also give you general guidance regarding product capabilities. Be prepared to provide your six-digit site code (xxxx.xx) when you call.

To learn about the full range of available support services, ask your Information Builders representative about InfoResponse Online, or call (800) 969-INFO.

Help Us to Serve You Better

To help our consultants answer your questions effectively, be prepared to provide specifications and sample files and to answer questions about errors and problems.

The following table lists the environment information that our consultants require.

<b>Platform</b>	
<b>Operating System</b>	
<b>OS Version</b>	
<b>JVM Vendor</b>	
<b>JVM Version</b>	

The following table lists additional questions to help us serve you better.

<b>Request/Question</b>	<b>Error/Problem Details or Information</b>
Did the problem arise through a service or event?	
Provide usage scenarios or summarize the application that produces the problem.	
When did the problem start?	
Can you reproduce this problem consistently?	
Describe the problem.	
Describe the steps to reproduce the problem.	
Specify the error messages.	
Any change in the application environment: software configuration, EIS/database configuration, application, and so forth?	

Request/Question	Error/Problem Details or Information
Under what circumstance does the problem <i>not</i> occur?	

The following is a list of error and problem files that might be applicable.

- ☐ Input documents (XML instance, XML schema, non-XML documents)
- ☐ Transformation files
- ☐ Error screen shots
- ☐ Error output files
- ☐ Trace files
- ☐ Custom functions and agents in use
- ☐ Diagnostic Zip
- ☐ Transaction log

## User Feedback

In an effort to produce effective documentation, the Technical Content Management staff welcomes your opinions regarding this document. Please use the Reader Comments form at the end of this document to communicate your feedback to us or to suggest changes that will support improvements to our documentation. You can also contact us through our website, <http://documentation.informationbuilders.com/connections.asp>.

Thank you, in advance, for your comments.

## iWay Software Training and Professional Services

Interested in training? Our Education Department offers a wide variety of training courses for iWay Software and other Information Builders products.

For information on course descriptions, locations, and dates, or to register for classes, visit our website, <http://education.informationbuilders.com>, or call (800) 969-INFO to speak to an Education Representative.



Interested in technical assistance for your implementation? Our Professional Services department provides expert design, systems architecture, implementation, and project management services for all your business integration projects. For information, visit our website, <http://www.informationbuilders.com/consulting>.



## Support for Address Validation

---

Omni-Insurance provides support for address validation operations. These address validation operations require the installation of the Loqate component. Loqate must be installed with an associated license key. You can obtain a license key from iWay Customer Support and download the files required to install Loqate from the Loqate website at:

<https://www.loqate.com/en-us/>

### In this chapter:

- ☐ [Installing Loqate on Windows](#)
  - ☐ [Installing Loqate on Linux](#)
- 

### Installing Loqate on Windows

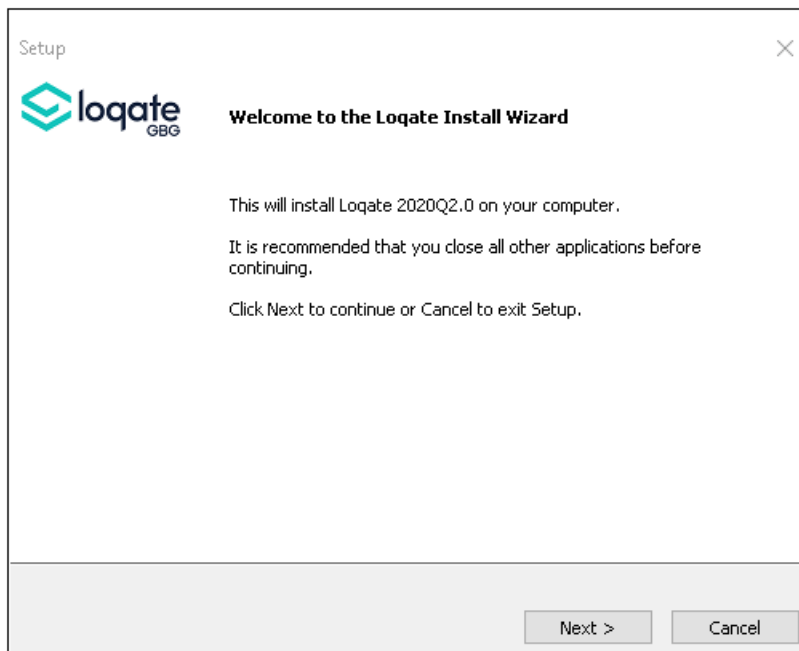
Loqate is used to enable address validation operations. Loqate must be installed on the system where Omni-Insurance is currently running.

#### **Procedure:** How to Install Loqate on Windows

You must stop the Omni Server and all Omni services before installing Loqate. To install Loqate on Windows platforms:

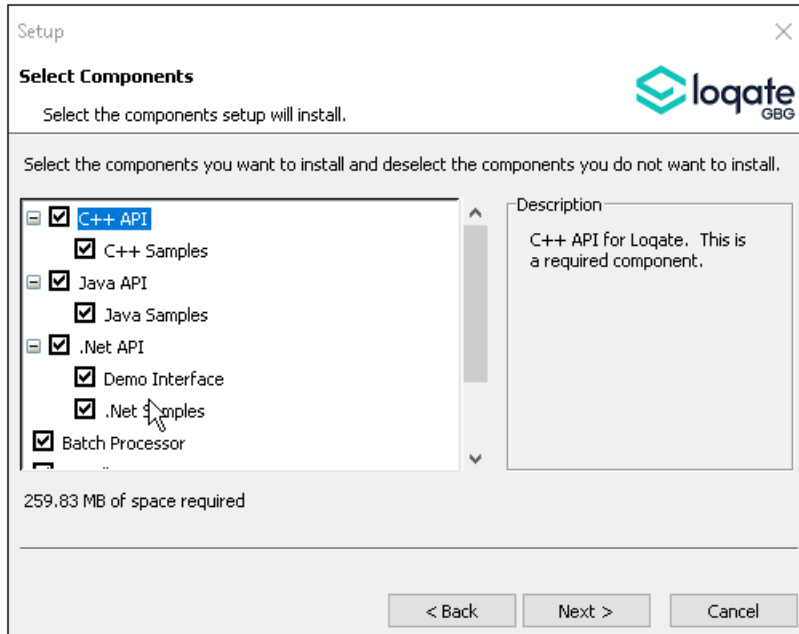
1. Create the following directory on your file system:  
`C:\loqate`
2. Download the files required to install Loqate from the Loqate website (<https://www.loqate.com/en-us/>).
3. Right-click the `setup_64.exe` installation file for Loqate, and select *Run as Administrator* from the context menu.

The Welcome to the Loqate Install Wizard dialog box opens, as shown in the following image.



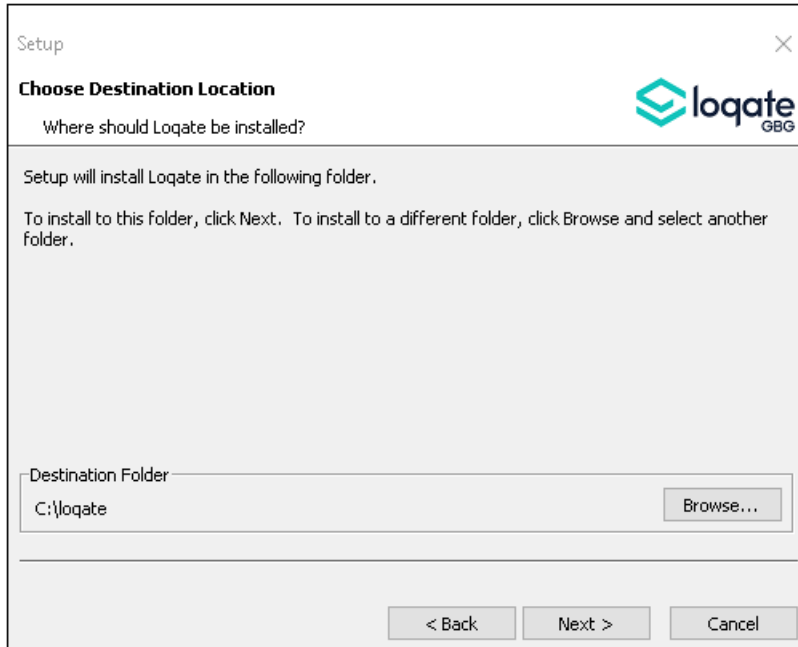
4. Click *Next*.

The Select Components dialog box opens, as shown in the following image.



5. Accept all of the components that are selected by default for installation and then click Next.

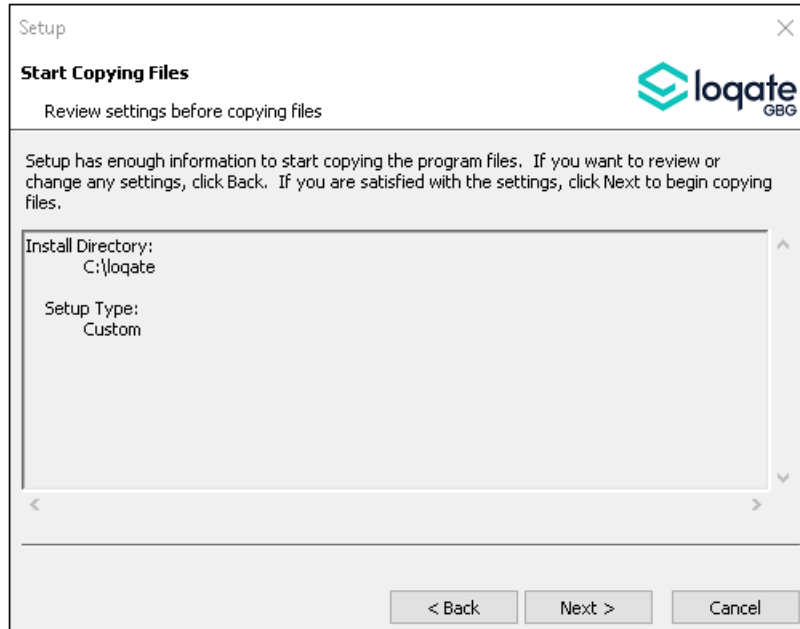
The Choose Destination Location dialog box opens, as shown in the following image.



**Note:** The recommended installation location (destination folder) is C:\loqate. If you choose a different installation location, then you will have to manually update the Loqate step in each validation plan with your specific path.

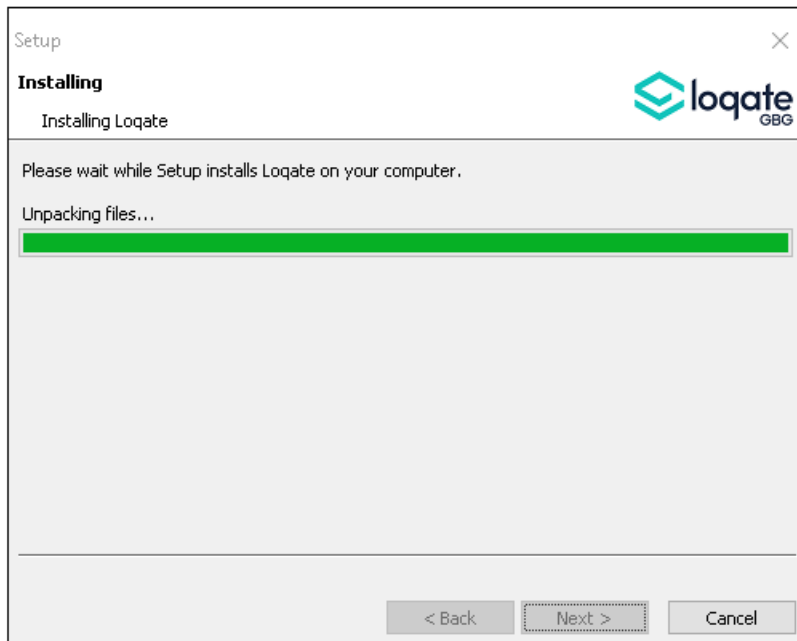
6. Ensure that C:\loqate is specified as the destination folder and then click Next.

The Start Copying Files dialog box opens, as shown in the following image.



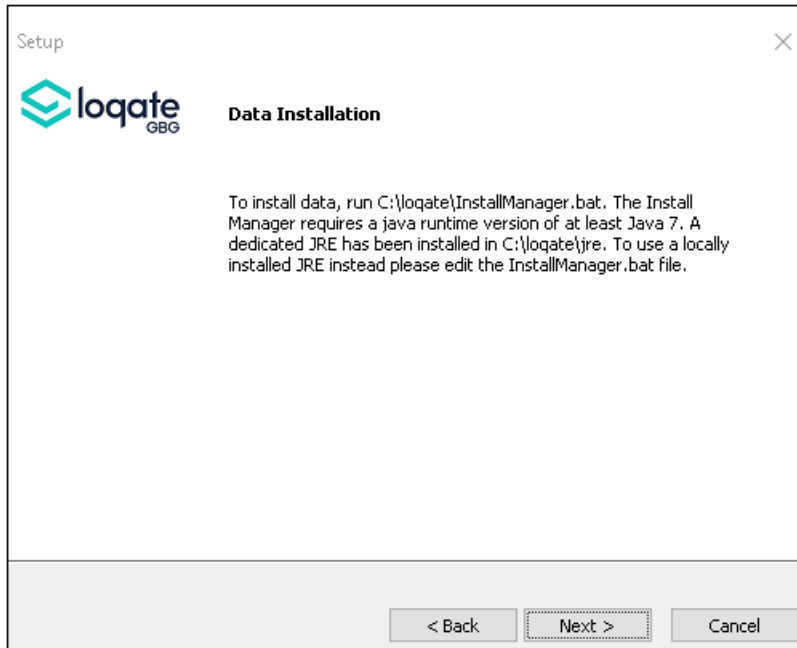
7. Click **Next**.

The Installing dialog box opens and displays a progress bar for the Loqate installation, as shown in the following image.



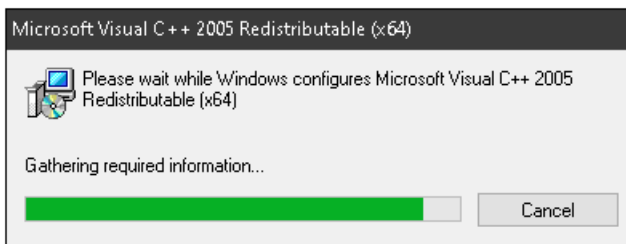


During the installation, the Data Installation dialog box opens, as shown in the following image.

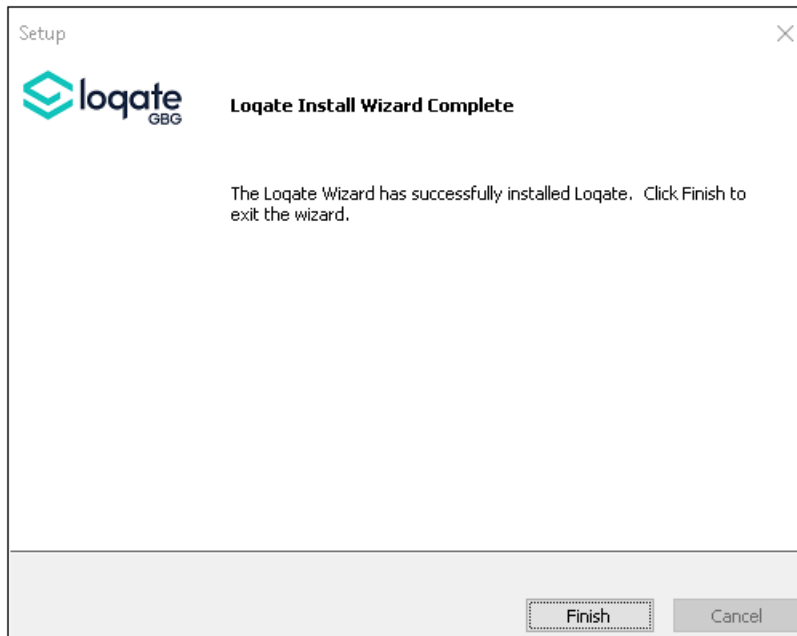


8. Click Next to continue.

A Microsoft Visual C++ 2005 Redistributable (x64) pop-up dialog box may open, as shown in the following image. You can ignore this pop-up dialog box.



When the installation is complete the Loqate Install Wizard Complete dialog box opens, as shown in the following image.



9. Click *Finish*.

Verify that your system PATH environment variable has been updated to include the Loqate installation location (for example, `C:\loqate`).

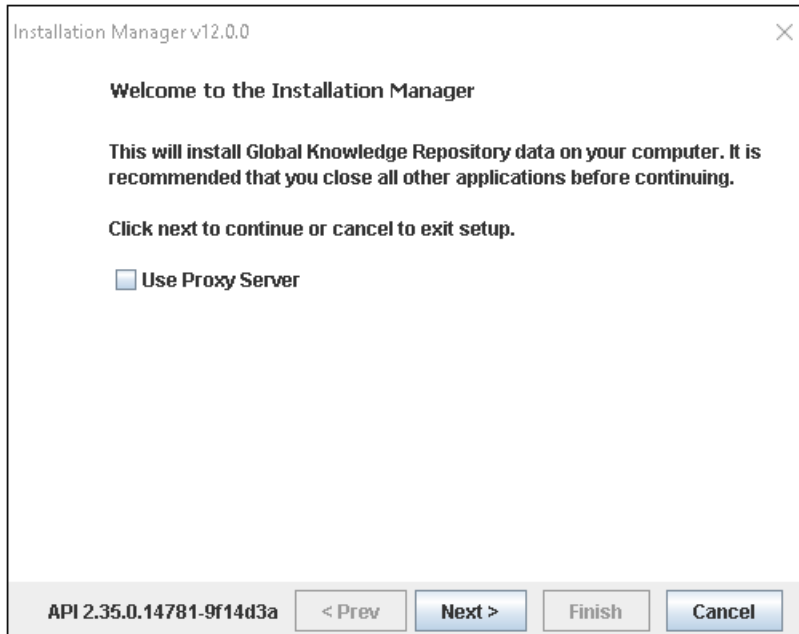
You are now ready to install Global Knowledge Repository data on your system.

10. On your file system, navigate to the Loqate installation directory. For example:

`C:\loqate`

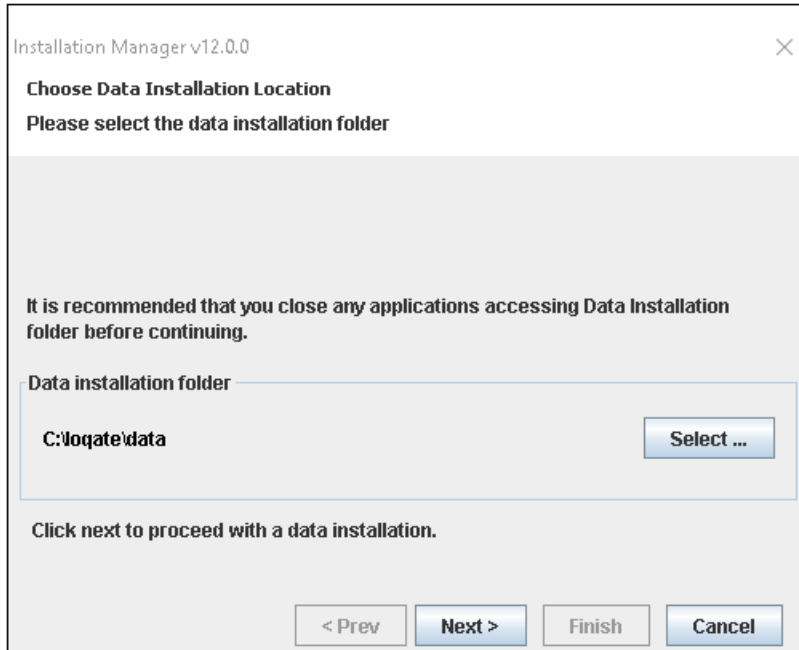
11. Double-click the *InstallManager.bat* file.

The Welcome to the Installation Manager dialog box opens, as shown in the following image.



12. Click Next.

The Choose Data Installation Location dialog box opens, as shown in the following image.



13. Click *Select*.

On the Select Data Install Folder dialog box, navigate to, and select, the following directory:

`C:\loqate\data`

14. Click *OK*.

You are returned to the Choose Data Installation Location dialog box.

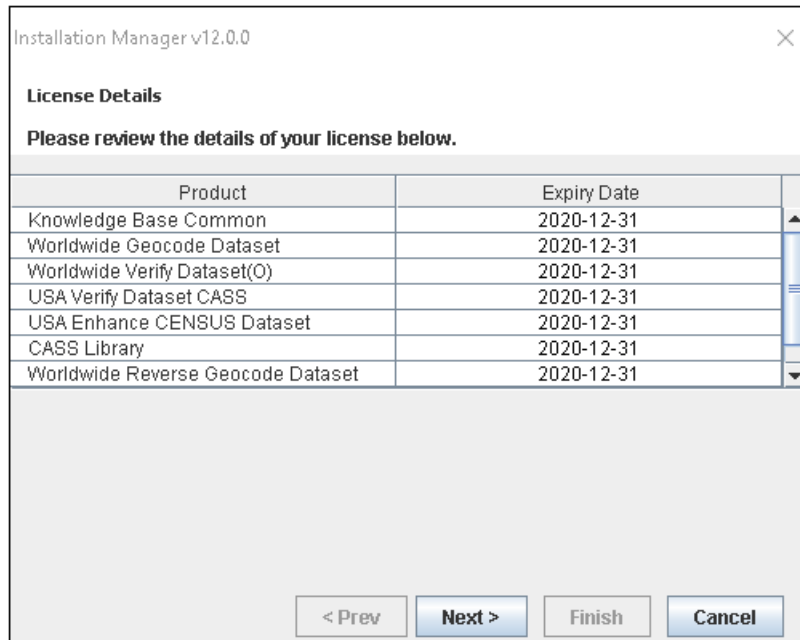
15. Click *Next* to continue with the installation.

The Enter License Information dialog box opens, as shown in the following image.

The screenshot shows a dialog box titled "Installation Manager v12.0.0" with a close button (X) in the top right corner. The main heading is "Enter License Information" followed by the instruction "Please enter your license key or specify the location of your license pack." There are two radio button options: "I have a license key" (which is selected) and "I have a license pack". Below the first option is a text input field containing a series of asterisks. Below the second option is a text area containing the text "Not selected yet ..." and a "Select ..." button. At the bottom of the dialog are four buttons: "< Prev", "Next >", "Finish", and "Cancel".

16. Type the Loqate license key, and then click Next.

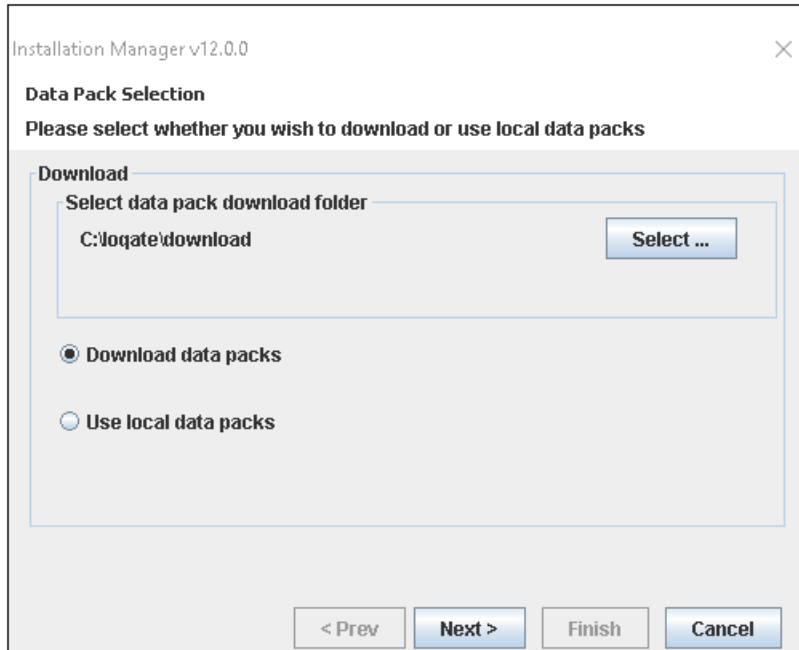
The License Details dialog box opens, as shown in the following image.



**Note:** The list of products that is displayed will vary depending on your license.

17. Confirm the license details and then click *Next*.

The Data Pack Selection dialog box opens, as shown in the following image.



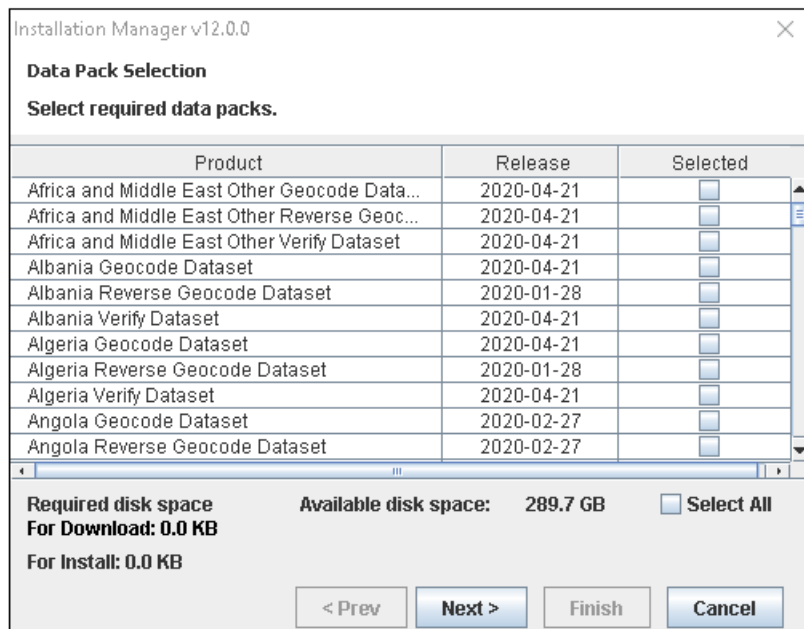
18. Click *Select*.

Navigate to, and select, the location of the data pack download folder. For example:

`C:\loqate\download`

19. Click *OK* to close the dialog box and then click *Next* on the Data Pack Selection dialog box to continue.

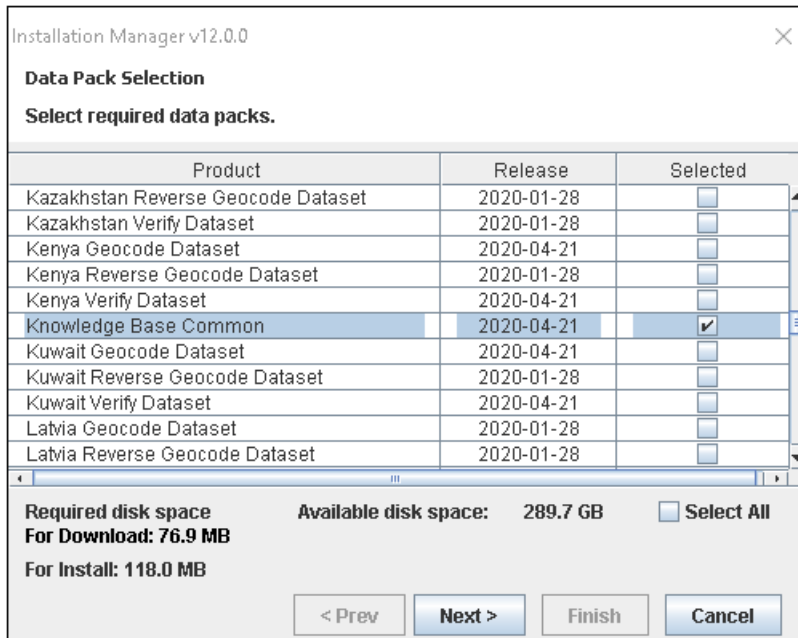
20. Deselect the *Select All* check box, as shown in the following image.



**Note:** The list of products that is displayed will vary depending on your license.

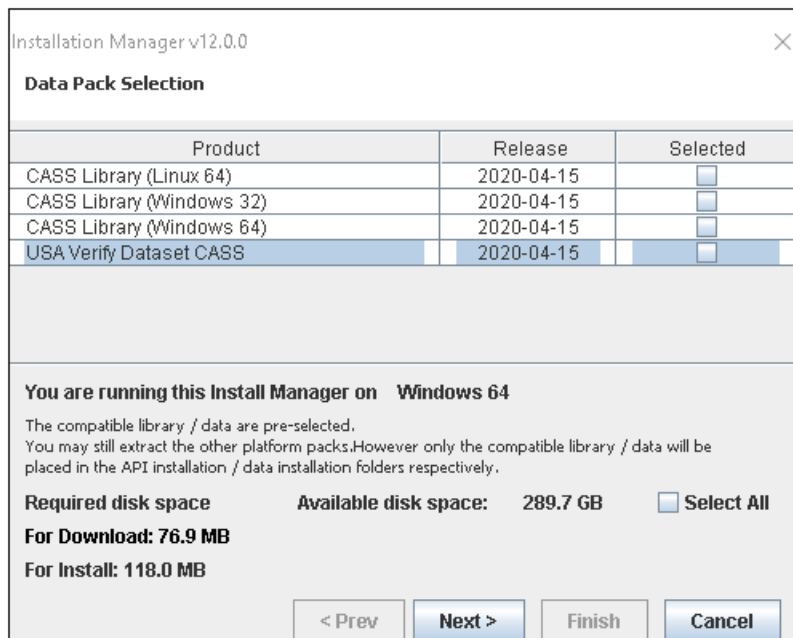


21. In the list of data packs, select only the data packs for which you are licensed. You must select Knowledge Base Common, as shown in the following image.

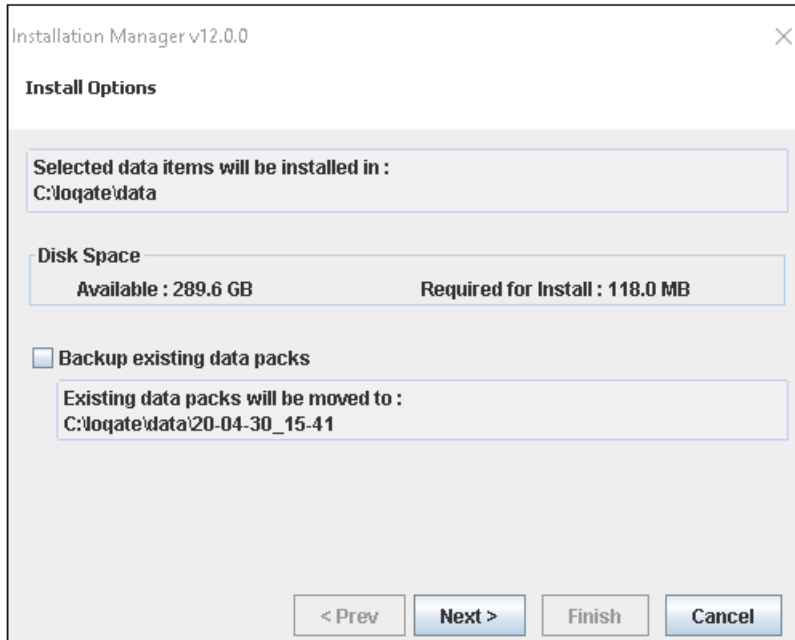


22. Click *Next* to continue.

23. Deselect all CASS library data packs, and then click *Next*, as shown in the following image.



The Install Options dialog box opens, as shown in the following image.

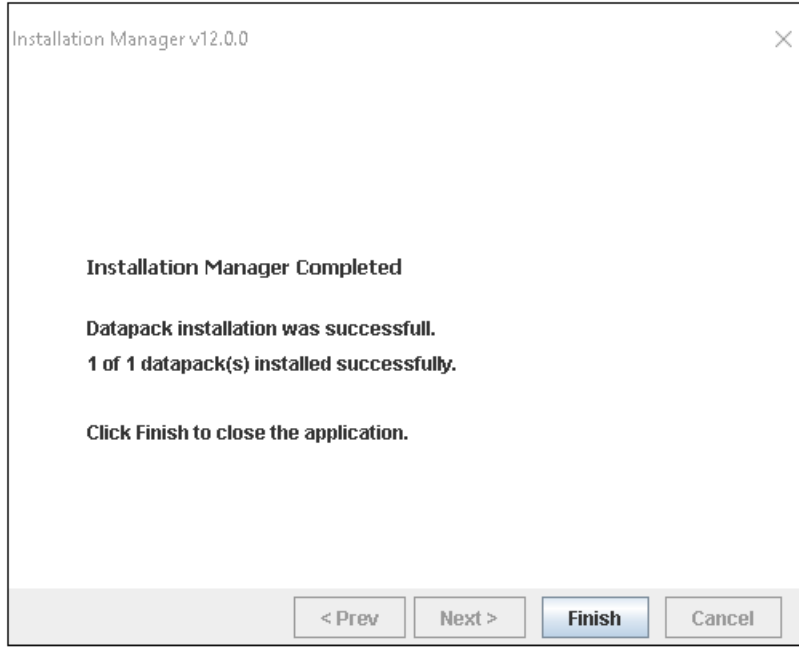


24. Click *Next*.

The download proceeds and displays its progress.

25. Wait for the download to complete, which can take a few minutes, and then click *Next* to continue.

The Installation Manager Completed dialog box opens, as shown in the following image.



26. When the installation is complete, click *Finish*.

## Installing Loqate on Linux

Loqate is used to enable address validation operations. Loqate must be installed on the system where Omni-Insurance is currently running.

### **Procedure:** How to Install Loqate on Linux

To install Loqate on Linux platforms:

1. Navigate to the directory containing the installation file (*loqate\_installer\_x86\_64-gcc7*), and execute the Loqate installer. For example:

```
# ./loqate_installer_x86_64-gcc7
```

```
This will install Loqate on your computer. Continue? [n/Y] Y
```

2. Type *Y* and press *Enter*.
3. Type the location to install Loqate (for example, */software/loqate*), as shown below.

```
Where do you want to install Loqate? [/opt/loqate] /software/loqate
```

A prompt appears, asking you to select the components to install, as shown below.

```
Please select the components to install. Items to install are marked
with an asterisk
```

```
* 1. Install Manager
* 2. Sample US Data
* 3. Java API
* 4. Node Collector
* 5. C++ API (required)
* 6. Batch Processor
* 7. Java Samples
* 8. Central Collector
* 9. C++ Samples
 10. Done
```

```
Select a component: 10
```

4. Type *10* to select all of the components and press *Enter*.

The Loqate installation starts and a notification appears when the installation is complete, as shown below.

```
Installing Loqate...
Installing C+
+...
```

```
Installing C++
Samples...
```

```
Installing
Java...
```

```
Installing Java
Samples...
```

```
Installing
Batch...
```

```
Installing Batch
Samples...
```

```
Installing
SAMPLEDATA_LIN...
```

```
Installing
IM_LINUX64...
```

```
Installing
NC_LINUX64...
```

```
Installing
CC_LINUX64...
```

To install data, cd /software/loqate then run ./InstallManager.sh. The Install Manager requires a java runtime version of at least Java 7. A dedicated JRE has been installed in /software/loqate/jre. To use a locally installed JRE instead please edit the InstallManager.sh file. Please note that you may need to change the permissions of both the InstallManager.sh file and jre directories to allow your user to run these applications.

**Installation complete.**

### ***Procedure:*** How to Download and Install the Loqate Data Packs

To download and install the country data packs for Loqate:

1. Change your directory to /software/loqate, as shown below.

```
# cd /software/loqate/
```

- Execute the *InstallManager.sh* executable file, as shown below.

```
# ./InstallManager.sh
Native library STLPort failed to load, ignore this if not using
solaris OS.
java.lang.UnsatisfiedLinkError: no stlport in java.library.path
Welcome to the Installation Manager - version 12.0.0
Running using local API version 2.35.0.14781-9f14d3a
```

A prompt appears, asking if your network communication passes through a proxy server, as shown below.

```
Does your network communication pass through a proxy server (y/n)? n
```

- Type *n* and press *Enter*.
- Type the location to install the data packs (for example, */software/loqate/data*), as shown below.

```
Please enter the path to the data installation folder
/software/loqate/data
Valid folder found. Proceeding with a data installation.
```

A prompt appears, asking you for a license key, as shown below.

```
Please select from below:
Enter 1 if you have a license key
Enter 2 if you have a license pack
Enter 3 to exit
1
```

- Type *1* and press *Enter*.
- Type the supplied license key and press *Enter*, as shown below.

```
Please enter the license key: <enter_your_license_key_here>
```

```
Contacting license server to validate the license key.
++++
Details of your current license
```

```
-----
```

Product	Expiry Date
Knowledge Base Common	2020-12-31
Worldwide Geocode Dataset	2020-12-31
Worldwide Verify Dataset(O)	2020-12-31
USA Verify Dataset CASS	2020-12-31
USA Enhance CENSUS Dataset	2020-12-31
CASS Library	2020-12-31
Worldwide Reverse Geocode Dataset	2020-12-31
UK Enhance DPS+UDPRN Dataset	2020-12-31

```
-----
```

A prompt appears, asking you to select how you want to download and install the data packs, as shown below.

```
Please select from below:
```

```
Enter 1 if you want to download the data packs but not install
```

```
Enter 2 if you want to download and install the data packs
```

```
Enter 3 if you want to install using your locally available data packs
```

```
Enter 4 to exit
```

```
2
```

7. Type 2 and press *Enter* to download and install the data packs.
8. Enter the location to store the downloaded data packs (for example, `/software/loqate/download/`), as shown below.



Please enter a valid download folder path

**/software/loqate/download**

Processing.

Fetching information from server about the available data packs.

Contacting license server for information on available updates.

+++

Done fetching information from server regarding available data packs.

S.No	Product	Date of Release
1	Africa and Middle East Other Geocode Dataset	2020-04-21
2	Africa and Middle East Other Verify Dataset	2020-04-21
.....		
.....		
.....		
212	Kenya Geocode Dataset	2020-04-21
213	Kenya Reverse Geocode Dataset	2020-01-28
214	Kenya Verify Dataset	2020-04-21
215	Knowledge Base Common	2020-04-21
216	Kuwait Geocode Dataset	2020-04-21
217	Kuwait Reverse Geocode Dataset	2020-01-28
218	Kuwait Verify Dataset	2020-04-21
.....		
.....		
.....		
405	Turkey Geocode Dataset	2020-01-28
406	Turkey Reverse Geocode Dataset	2020-01-28
407	Turkey Verify Dataset	2020-01-28
408	UK Enhance DPS+UDPRN Dataset	2020-04-21
409	USA Enhance CENSUS Dataset	2019-10-11
410	USA Geocode Dataset	2020-04-21
411	USA Geocode1 Dataset	2020-04-21
412	USA Geocode2 Dataset	2020-04-21
413	USA Geocode3 Dataset	2020-04-21
414	USA Reverse Geocode Dataset	2020-01-28
415	USA Territories Geocode Dataset	2020-04-21
416	USA Territories Reverse Geocode Dataset	2020-04-21
417	USA Territories Verify Dataset	2020-04-21
418	USA Verify Dataset	2020-04-21
419	Uganda Geocode Dataset	2020-01-28
420	Uganda Reverse Geocode Dataset	2020-01-28
421	Uganda Verify Dataset	2020-01-28
.....		
.....		
.....		

**Note:** The available data packs may vary based on your licensing.

- Enter the corresponding number for each of the data packs for which you are licensed, and press *Enter* after each. You must select the Knowledge Base Common data pack.

10. When complete, type *Done* and press *Enter*, as shown below.

```
-----
Enter : 1 to install the first Product, 2 to install the second Product
and so on
Enter : all if all products are to be installed
Enter : done to complete the selection of products
Enter your selection:
215
Enter your selection:
4
Enter your selection:
5
Enter your selection:
6
Enter your selection:
Done
```

11. If you are prompted for the CASS data packs, type *none* and press *Enter*. Then type *Done* and press *Enter* again. Otherwise, you can skip this step and the data pack download process begins.

```
-----
S.No  Certification Product          Date of Release
-----
1      CASS Library (Linux 64)        2020-04-15
2      CASS Library (Windows 32)      2020-04-15
3      CASS Library (Windows 64)      2020-04-15
4      USA Verify Dataset CASS       2020-04-15
-----
Enter : 1 to install the first Product, 2 to install the second Product
and so on
Enter : none to skip certification products
Enter : all if all products are to be installed
Enter : done to complete the selection of products

*** Note: You are running Install Manager on Linux 64
You may extract the other platform packs as well. However, only the
compatible library/data will be placed in the API installation/data
installation folders, respectively.
Enter your selection:
none
Skipping Certification products
Enter your selection:
done
```

```

-----
Space available : 53.9 GB
Space required for download : 78.6 GB
-----
Downloading data packs.
+++++++
Completed downloading DSVALB_4290_20200421_3.lfz
+++++++
+++++++
Completed downloading KBCOMMON_14420_20200421_118.lfz
+++++++
+++++++
Completed downloading data packs.
-----
Space available : 53.9 GB
Space required for install : 123.0 GB
-----
Beginning installing of data packs.

Unzipping DSRALB_7975_20200128_1.lfz and installing
+
Unzipping DSGALB_4290_20200421_1.lfz and installing
+
Unzipping KBCOMMON_14420_20200421_118.lfz and installing
+++++++
+++++++
+++++++
Unzipping DSVALB_4290_20200421_3.lfz and installing
+++
Completed installing the data packs.
Datapack installation was successful.

```

### ***Procedure:* How to Set Loqate Environment Variables**

Depending on your operating system, you must first modify the *.profile* and *bash\_profile* files that are called when opening a shell.

1. Add the following lines at the end of these files:

```

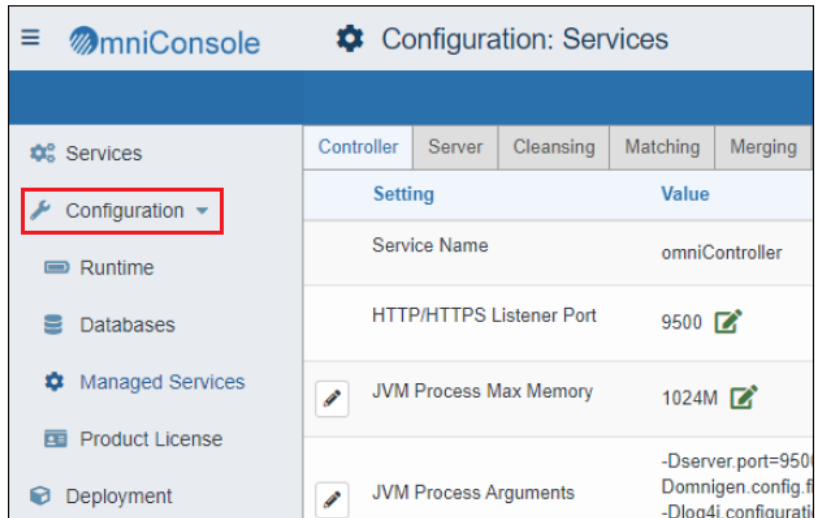
export LD_LIBRARY_PATH=$LD_LIBRARY_PATH:/software/loqate
export LIBPATH=$LIBPATH:/software/loqate

```

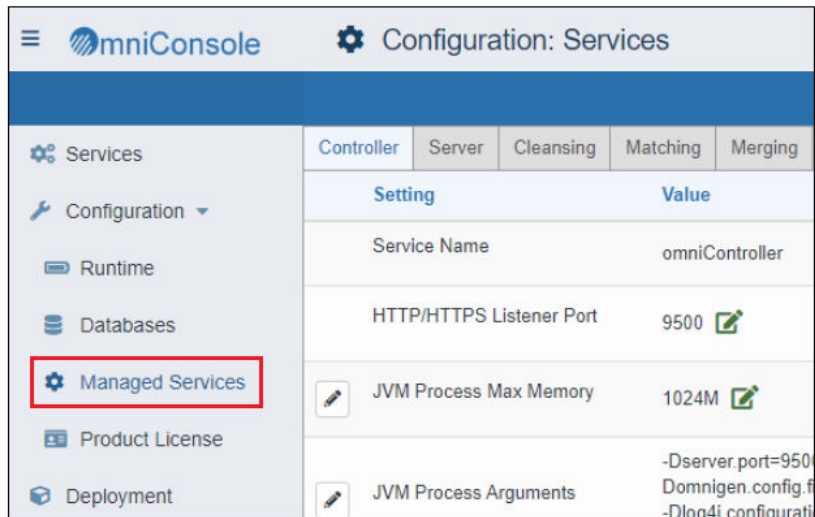
2. Save and then close these files.
3. Open a new shell to implement any changes that were made to your environment variables.



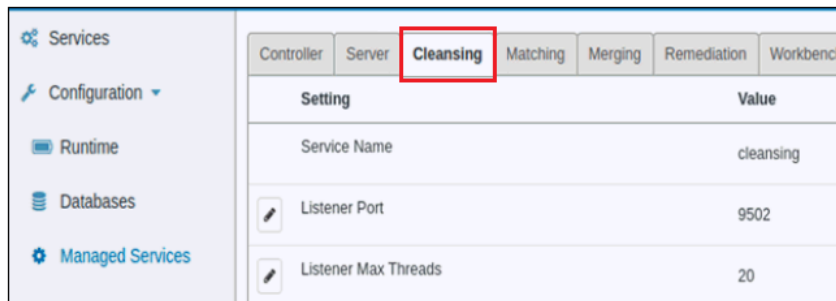
2. Expand *Configuration* in the left pane, as shown in the following image.



3. Click *Managed Services*, as shown in the following image.



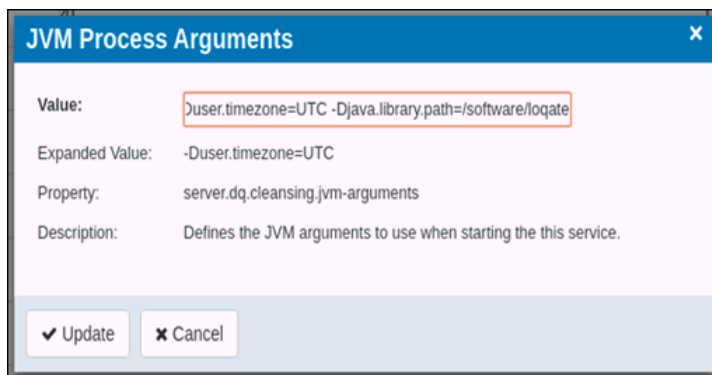
- Click the *Cleansing* tab, as shown in the following.



- Click the edit icon to the left of the *JVM Process Arguments* parameter, as shown in the following image.



The JVM Process Arguments dialog box opens, as shown in the following image.



- In the Value field, type the following syntax and ensure there is a space between UTC and the new value.

```
-Djava.library.path=/software/loqate
```

7. Click *Update*.

The new value is now displayed for the *JVM Process Arguments* parameter, as shown in the following image.

	JVM Process Max Memory	512M
	JVM Process Arguments	-Duser.timezone=UTC -Djava.library.path=/software/loqate 
	JVM Process Classpath	/software/omnigen/OmniServer/mastering/runtime/lib/* /software/omnige

**Procedure: How to Restart Omni-Gen**

To restart Omni-Insurance:

1. Open a new shell (terminal window) to ensure that the new environment variables are set.
2. Completely stop, then start all of Omni-Insurance.







## Feedback

*Customer success is our top priority. Connect with us today!*

---

Information Builders Technical Content Management team is comprised of many talented individuals who work together to design and deliver quality technical documentation products. Your feedback supports our ongoing efforts!

You can also preview new innovations to get an early look at new content products and services. Your participation helps us create great experiences for every customer.

To send us feedback or make a connection, contact Sarah Buccellato, Technical Editor, Technical Content Management at [Sarah\\_Buccellato@ibi.com](mailto:Sarah_Buccellato@ibi.com).

To request permission to repurpose copyrighted material, please contact Frances Gambino, Vice President, Technical Content Management at [Frances\\_Gambino@ibi.com](mailto:Frances_Gambino@ibi.com).

# iWay

---

## / Omni-Insurance Installation and Configuration Guide for Loqate® Address Validation

Version 3.12

DN3502368.0520