

# iWay

Omni-Gen™ Integration Edition  
Installer User's Guide

Version 3.14

Active Technologies, EDA, EDA/SQL, FIDEL, FOCUS, Information Builders, the Information Builders logo, iWay, iWay Software, Parlay, PC/FOCUS, RStat, Table Talk, Web390, WebFOCUS, WebFOCUS Active Technologies, and WebFOCUS Magnify are registered trademarks, and DataMigrator and Hyperstage are trademarks of Information Builders, Inc.

Adobe, the Adobe logo, Acrobat, Adobe Reader, Flash, Adobe Flash Builder, Flex, and PostScript are either registered trademarks or trademarks of Adobe Systems Incorporated in the United States and/or other countries.

Due to the nature of this material, this document refers to numerous hardware and software products by their trademarks. In most, if not all cases, these designations are claimed as trademarks or registered trademarks by their respective companies. It is not this publisher's intent to use any of these names generically. The reader is therefore cautioned to investigate all claimed trademark rights before using any of these names other than to refer to the product described.

Copyright © 2020, by Information Builders, Inc. and iWay Software. All rights reserved. Patent Pending. This manual, or parts thereof, may not be reproduced in any form without the written permission of Information Builders, Inc.

# Contents

---

<b>Preface</b> .....	<b>5</b>
Documentation Conventions .....	5
Related Publications .....	6
Customer Support .....	6
Help Us to Serve You Better .....	7
User Feedback .....	8
iWay Software Training and Professional Services .....	9
<b>1. Omni-Gen™ Integration Edition Installer Components Configuration Overview and Prerequisites</b> .....	<b>11</b>
Omni-Gen™ Components Configuration Overview .....	11
Omni-Gen Integration Edition Installation Prerequisites .....	11
Omni-Gen Installation Prerequisites for Db2 .....	12
<b>2. Installing Omni-Gen Integration Edition on Windows Platforms</b> .....	<b>15</b>
Installing Omni-Gen Integration Edition .....	15
Omni-Gen Controller as a Windows Service .....	41
Installing the Omni-Gen Controller as a Service. ....	41
Removing the Omni-Gen Controller Service. ....	41
Starting and Stopping. ....	41
Toggling Between Installation Types. ....	42
<b>3. Installing Omni-Gen Integration Edition on Linux Platforms</b> .....	<b>43</b>
Installing Omni-Gen Integration Edition .....	43



# Preface

This content provides prerequisites and instructions to install Omni-Gen™ Integration Edition. This content is intended for system administrators with knowledge of Windows and Linux operating systems.

## How This Manual Is Organized

This manual includes the following chapters:

Chapter/Appendix		Contents
1	Omni-Gen™ Integration Edition Installer Components Configuration Overview and Prerequisites	Provides prerequisites and instructions for installing Omni-Gen™ Integration Edition version 3.14.
2	Installing Omni-Gen Integration Edition on Windows Platforms	Describes how to install Omni-Gen Integration Edition on Windows platforms.
3	Installing Omni-Gen Integration Edition on Linux Platforms	Describes how to install Omni-Gen Integration Edition on Linux platforms.

## Documentation Conventions

The following table lists and describes the documentation conventions that are used in this manual.

Convention	Description
<code>THIS TYPEFACE</code> or <code>this typeface</code>	Denotes syntax that you must type exactly as shown.
<i>this typeface</i>	Represents a placeholder (or variable), a cross-reference, or an important term. It may also indicate a button, menu item, or dialog box option that you can click or select.
<u>underscore</u>	Indicates a default setting.
Key + Key	Indicates keys that you must press simultaneously.

Convention	Description
{ }	Indicates two or three choices. Type one of them, not the braces.
	Separates mutually exclusive choices in syntax. Type one of them, not the symbol.
...	Indicates that you can enter a parameter multiple times. Type only the parameter, not the ellipsis (...).
.	Indicates that there are (or could be) intervening or additional commands.

## Related Publications

Visit our Technical Documentation Library at <http://documentation.informationbuilders.com>. You can also contact the Publications Order Department at (800) 969-4636.

## Customer Support

Do you have questions about this product?

Join the Focal Point community. Focal Point is our online developer center and more than a message board. It is an interactive network of more than 3,000 developers from almost every profession and industry, collaborating on solutions and sharing every tips and techniques. Access Focal Point at <http://forums.informationbuilders.com/eve/forums>.

You can also access support services electronically, 24 hours a day, with InfoResponse Online. InfoResponse Online is accessible through our website, <http://www.informationbuilders.com>. It connects you to the tracking system and known-problem database at the Information Builders support center. Registered users can open, update, and view the status of cases in the tracking system and read descriptions of reported software issues. New users can register immediately for this service. The technical support section of [www.informationbuilders.com](http://www.informationbuilders.com) also provides usage techniques, diagnostic tips, and answers to frequently asked questions.

Call Information Builders Customer Support Services (CSS) at (800) 736-6130 or (212) 736-6130. Customer Support Consultants are available Monday through Friday between 8:00 A.M. and 8:00 P.M. EST to address all your questions. Information Builders consultants can also give you general guidance regarding product capabilities. Be prepared to provide your six-digit site code (xxxx.xx) when you call.

To learn about the full range of available support services, ask your Information Builders representative about InfoResponse Online, or call (800) 969-INFO.

## Help Us to Serve You Better

To help our consultants answer your questions effectively, be prepared to provide specifications and sample files and to answer questions about errors and problems.

The following table lists the environment information that our consultants require.

<b>Platform</b>	
<b>Operating System</b>	
<b>OS Version</b>	
<b>JVM Vendor</b>	
<b>JVM Version</b>	

The following table lists additional questions to help us serve you better.

<b>Request/Question</b>	<b>Error/Problem Details or Information</b>
Did the problem arise through a service or event?	
Provide usage scenarios or summarize the application that produces the problem.	
When did the problem start?	
Can you reproduce this problem consistently?	
Describe the problem.	
Describe the steps to reproduce the problem.	
Specify the error messages.	

Request/Question	Error/Problem Details or Information
Any change in the application environment: software configuration, EIS/database configuration, application, and so forth?	
Under what circumstance does the problem <i>not</i> occur?	

The following is a list of error and problem files that might be applicable.

- ☐ Input documents (XML instance, XML schema, non-XML documents)
- ☐ Transformation files
- ☐ Error screen shots
- ☐ Error output files
- ☐ Trace files
- ☐ Service Manager package to reproduce problem
- ☐ Custom functions and agents in use
- ☐ Diagnostic Zip
- ☐ Transaction log

For information on tracing, see the *iWay Service Manager User's Guide*.

## User Feedback

In an effort to produce effective documentation, the Technical Content Management staff welcomes your opinions regarding this document. Please use the Reader Comments form at the end of this document to communicate your feedback to us or to suggest changes that will support improvements to our documentation. You can also contact us through our website, <http://documentation.informationbuilders.com/connections.asp>.

Thank you, in advance, for your comments.



## iWay Software Training and Professional Services

Interested in training? Our Education Department offers a wide variety of training courses for iWay Software and other Information Builders products.

For information on course descriptions, locations, and dates, or to register for classes, visit our website, <http://education.informationbuilders.com>, or call (800) 969-INFO to speak to an Education Representative.

Interested in technical assistance for your implementation? Our Professional Services department provides expert design, systems architecture, implementation, and project management services for all your business integration projects. For information, visit our website, <http://www.informationbuilders.com/consulting>.



# Omni-Gen™ Integration Edition Installer Components Configuration Overview and Prerequisites

---

This chapter provides prerequisites and instructions for installing a new instance of Omni-Gen™ Integration Edition version 3.14.

The procedure assumes that an Omni-Gen Deployment Bundle has been built using Omni Designer (OD) and is available for this installation.

**In this chapter:**

- ☐ [Omni-Gen™ Components Configuration Overview](#)
  - ☐ [Omni-Gen Integration Edition Installation Prerequisites](#)
  - ☐ [Omni-Gen Installation Prerequisites for Db2](#)
- 

## Omni-Gen™ Components Configuration Overview

Omni-Gen can be installed on the following platforms:

- ☐ Windows (64-bit)
- ☐ Linux (64-bit)

The Omni-Gen Installer is developed using InstallAnywhere and follows common installer models.

1. Installation information is collected from the user through a series of prompts.
2. An image is installed to the file system specified by the user.
3. The contents of the image are configured based on the collected information.

## Omni-Gen Integration Edition Installation Prerequisites

Before the Omni-Gen Integration Edition is installed, ensure that the following prerequisites are configured on your environment:

1. One or two empty database schemas must be built and ready for use.

**Note:** The creation of the database is generally the responsibility of a database administrator. A database administrator user name and password for the database or databases must also be available.

2. Omni-Gen Integration Edition requires JDK version 8. The user is advised to consult with their JDK provider for the latest build and licensing.

**Note:** Omni-Gen Integration Edition has been certified with OpenJDK 8 build 232, as well as with Oracle JDK 8 build 231.

- a. Verify that the JAVA\_HOME environment variable is defined properly.
  - b. Verify that %JAVA\_HOME%\bin is the first element in your PATH.
3. Acquire the required DBMS specific JDBC .jar files for use by the OGC and ensure these files are available on the machine where the OGC will be installed.
    - ☐ **Db2:** db2jcc4.jar, db2jcc\_license\_cu.jar
    - ☐ **Oracle:** ojdbc8.jar
    - ☐ **PostgreSQL:** postgresql-9.3-1102.jdbc4.jar
    - ☐ **SQL Server (Microsoft):** sqljdbc42.jar
    - ☐ **SQL Server (Open Source):** jtds-1.3.1.jar
  4. Ensure that the database server is configured to allow TCP connections and that the TCP ports are active.
  5. Ensure that you have the proper administrative rights to modify the Java CA certificate (cacerts) store and add files to the following directory:

`JAVA_HOME/jre/lib/security`

## Omni-Gen Installation Prerequisites for Db2

If you are using Db2 with Omni-Gen, then the following must be executed against your Db2 instance to ensure that the required storage is allocated for the RAMP tables.

```
CREATE BUFFERPOOL BP32K SIZE 2000 PAGESIZE 32K;

CREATE LARGE TABLESPACE "RAMPSPACE"
  IN DATABASE PARTITION GROUP "IBMDEFAULTGROUP"
  PAGESIZE 32 K
  MANAGED BY AUTOMATIC STORAGE
  AUTORESIZE YES
  EXTENTSIZE 32
  BUFFERPOOL "BP32K"
  OVERHEAD INHERIT
  TRANSFERRATE INHERIT
  DATA TAG INHERIT
  USING STOGROUP "IBMSTOGROUP"
  NO FILE SYSTEM CACHING;

GRANT USE OF TABLESPACE "RAMPSPACE" TO PUBLIC;
```



## Chapter 2

# Installing Omni-Gen Integration Edition on Windows Platforms

This chapter describes how to install Omni-Gen Integration Edition on Windows platforms.

### In this chapter:

- ❑ [Installing Omni-Gen Integration Edition](#)
- ❑ [Omni-Gen Controller as a Windows Service](#)

## Installing Omni-Gen Integration Edition

This section describes how to install Omni-Gen Integration Edition. This procedure assumes that a database server (for example, PostgreSQL) and a repository server (for example, SVN) are already installed.

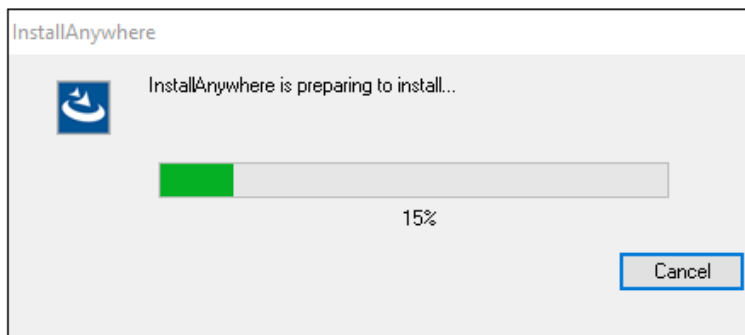
### **Procedure:** How to Install Omni-Gen Integration Edition on Windows

1. Verify that the JAVA HOME environment variable (for Java Development Kit version 8) is defined properly and that %JAVA HOME%\bin is the first element in your PATH.
2. Download the installer, *omnigen-installer-3.14.\*-Windows-IE.exe* from the Information Builders Technical Support Center.

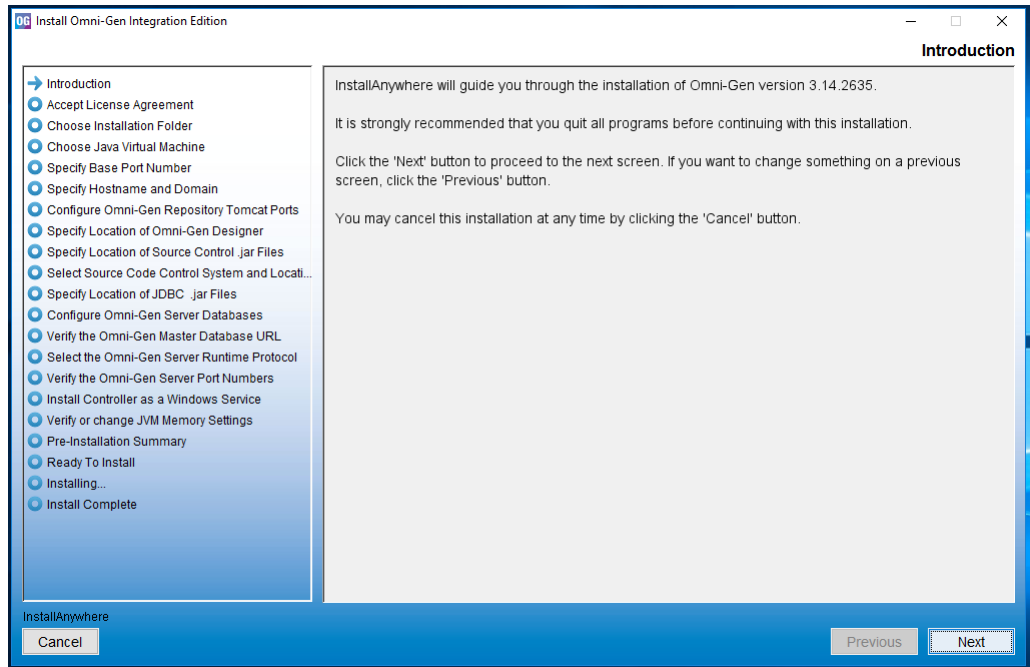
<http://techsupport.informationbuilders.com>

3. In the File Explorer, navigate to the downloaded *omnigen-installer-3.14.\*-Windows-IE.exe* file, right-click this file, and select *Run as administrator*.

The InstallAnywhere startup window appears, as shown in the following image.



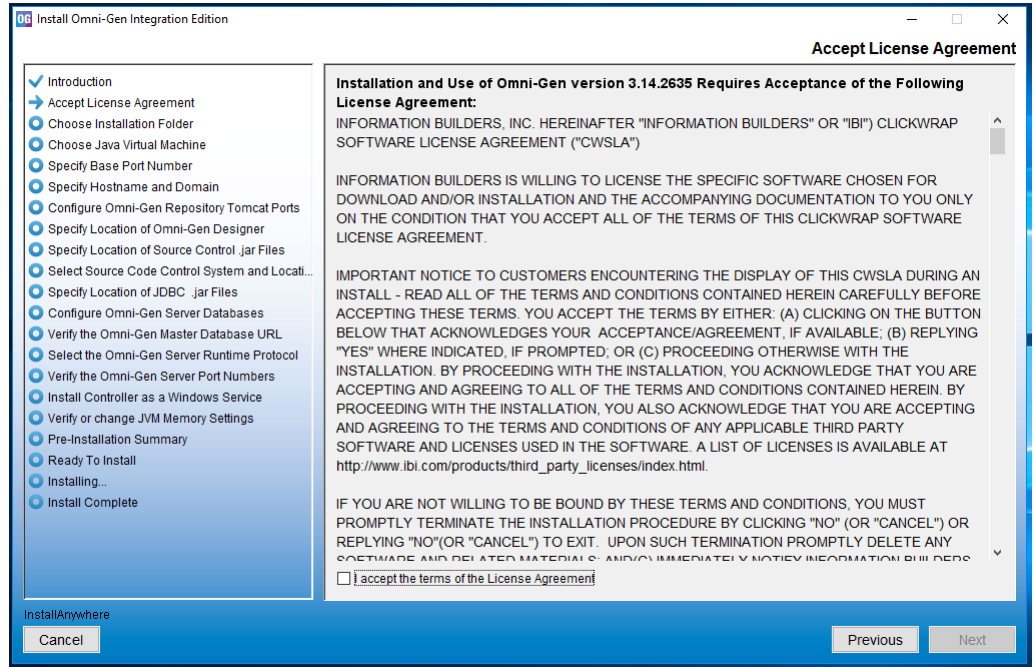
When the installation is ready to begin, the Introduction pane opens, as shown in the following image.



4. Click **Next**.

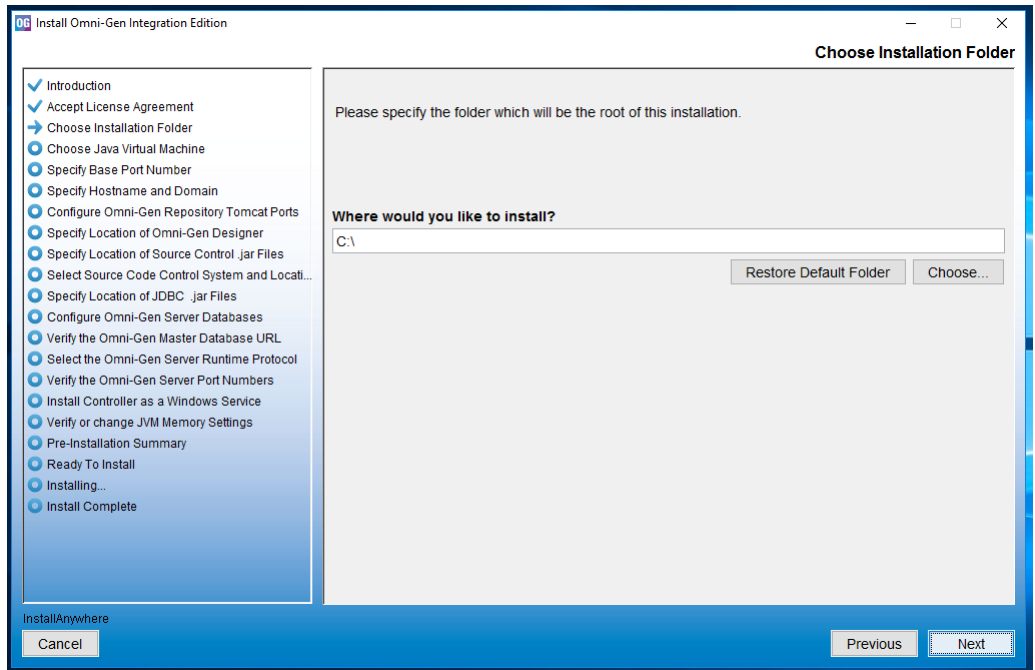


The Accept License Agreement pane opens, as shown in the following image.



5. Read the License Agreement, select the *I accept the terms of the License Agreement* check box, and then click *Next*.

The Choose Installation Folder pane opens, as shown in the following image.



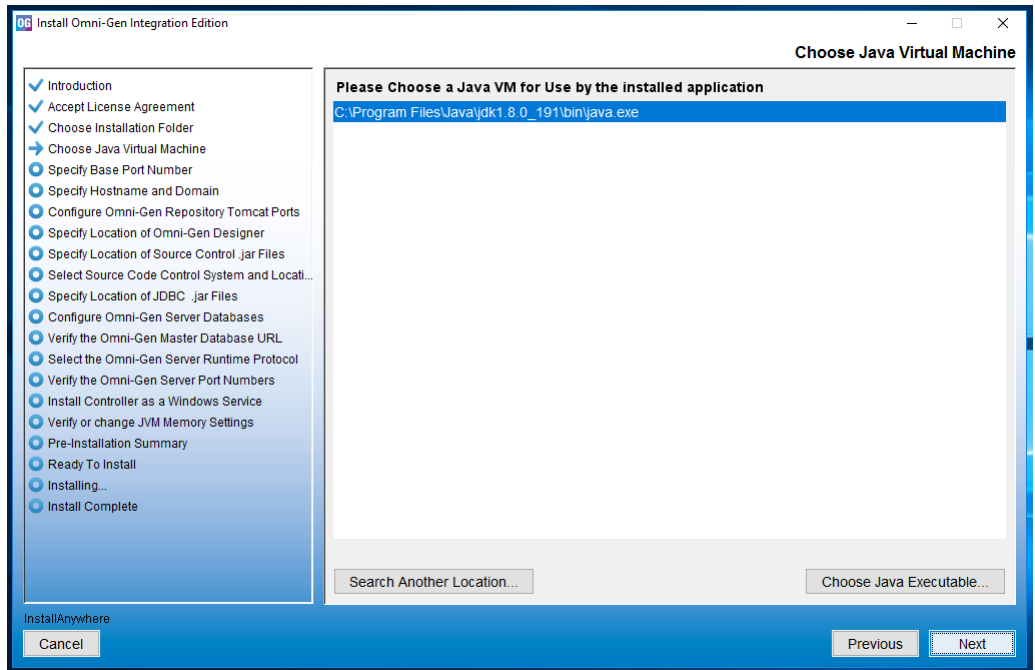
6. In the *Where would you like to install* field, specify a location (path) on your system where you want to install all of the required files for Omni-Gen Integration Edition.

The installer will create a directory named *OmniGen* in the location you specified. For example, if you accept the default location as *C:\*, then the installer will install Omni-Gen to:

`C:\OmniGen`

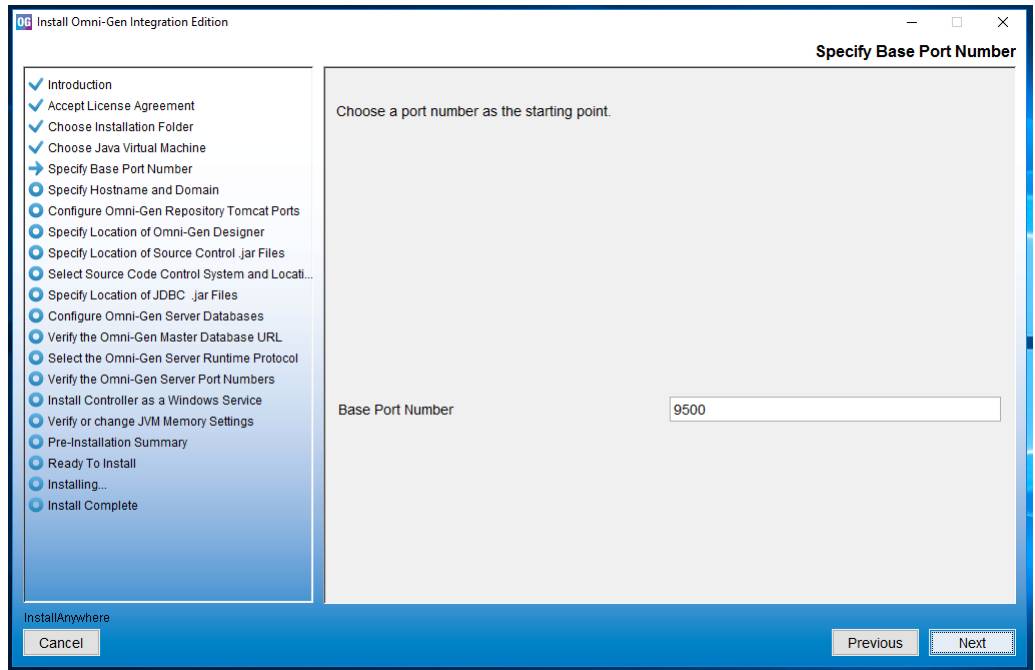
7. Click *Next*.

The Choose Java Virtual Machine pane opens, as shown in the following image.



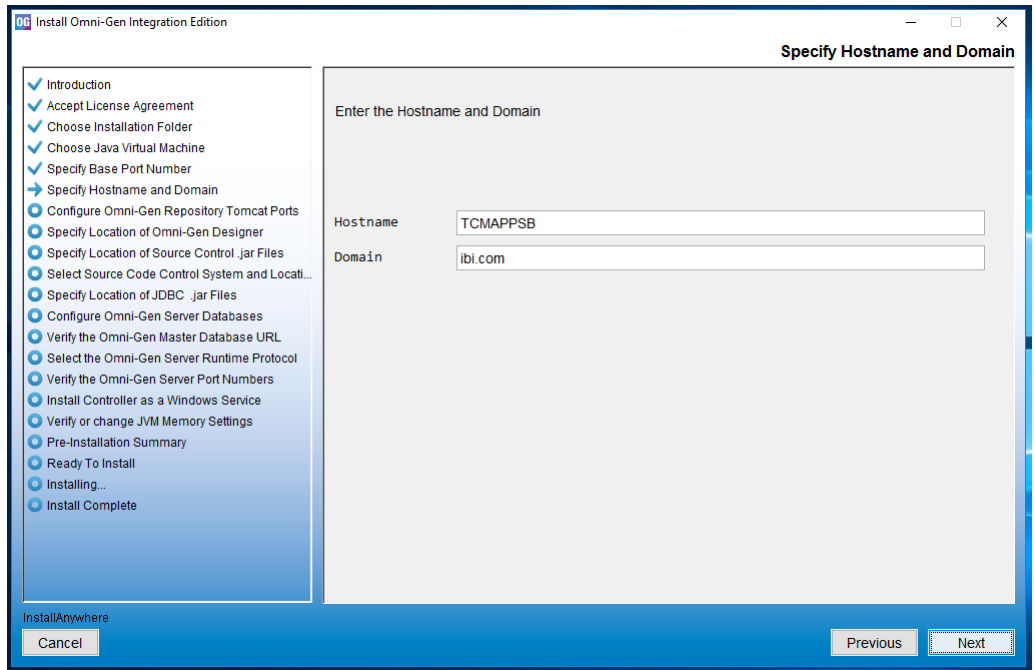
8. Ensure that the Java version located is version 1.8 or higher, and then click *Next*.

The Specify Base Port Number pane opens, as shown in the following image.



9. Specifying a base port number automatically assigns a set of port numbers for use by Omni-Gen Integration Edition components, and is used when installing more than one instance of Omni-Gen Integration Edition on a single machine. If you are installing a second instance of Omni-Gen Integration Edition, or need to configure different ports to avoid conflicts with systems already deployed on your Omni-Gen Integration Edition host, then see your system administrator. Otherwise, click **Next** to continue.

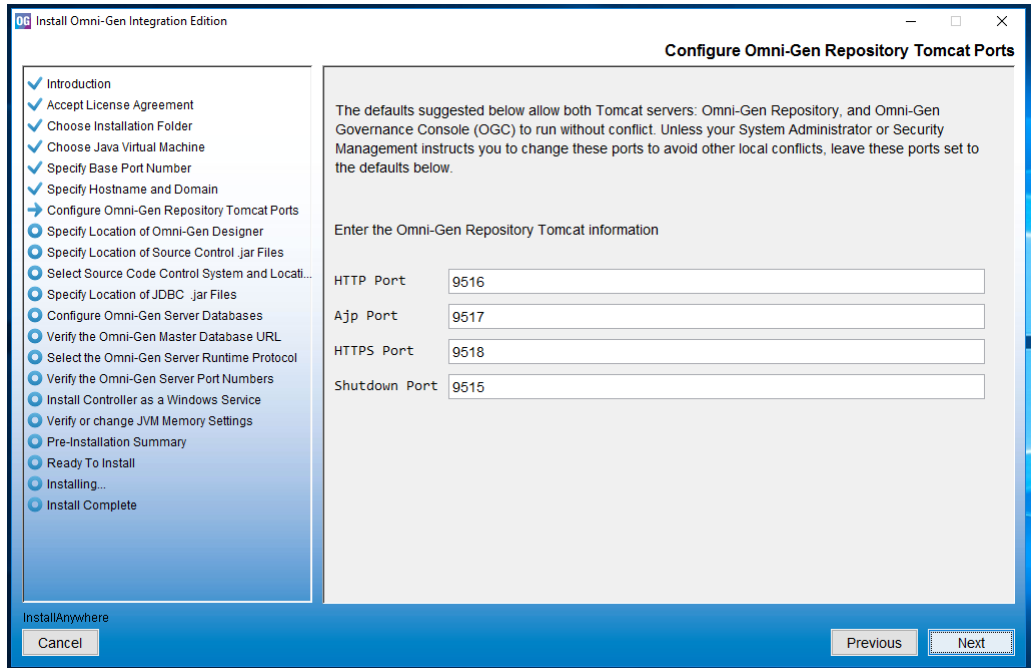
The Specify Hostname and Domain pane opens, as shown in the following image.



The default host name is the machine on which you are currently installing.

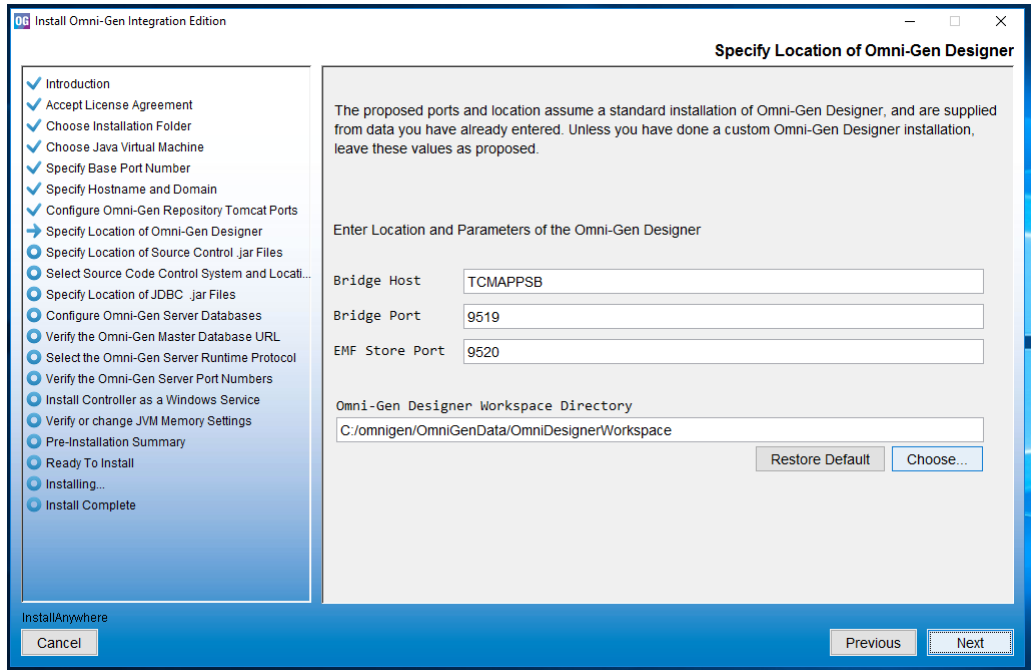
10. In the Domain field, type the host domain, and then click **Next**.

The Configure Omni-Gen Repository Tomcat Ports pane opens, as shown in the following image.



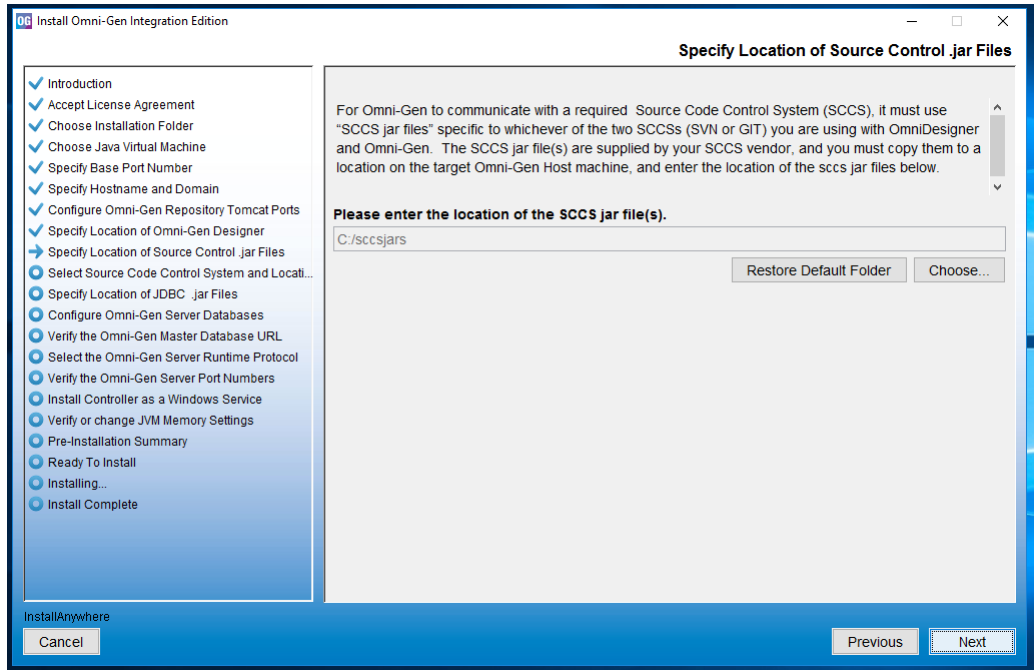
11. Verify the ports that are indicated by default and modify accordingly, if required.
12. Click Next.

The Specify Location of Omni-Gen Designer pane opens, which prompts for the parameters that define the location of Omni Designer, as shown in the following image.



13. Accept the default parameters, and then click Next.

The Specify Location of Source Control .jar Files pane opens, which prompts you to select a folder containing the Source Code Control System (SCCS) .jar files, as shown in the following image.



14. Change the location of the SCCS .jar files, if necessary, and then click **Next**.

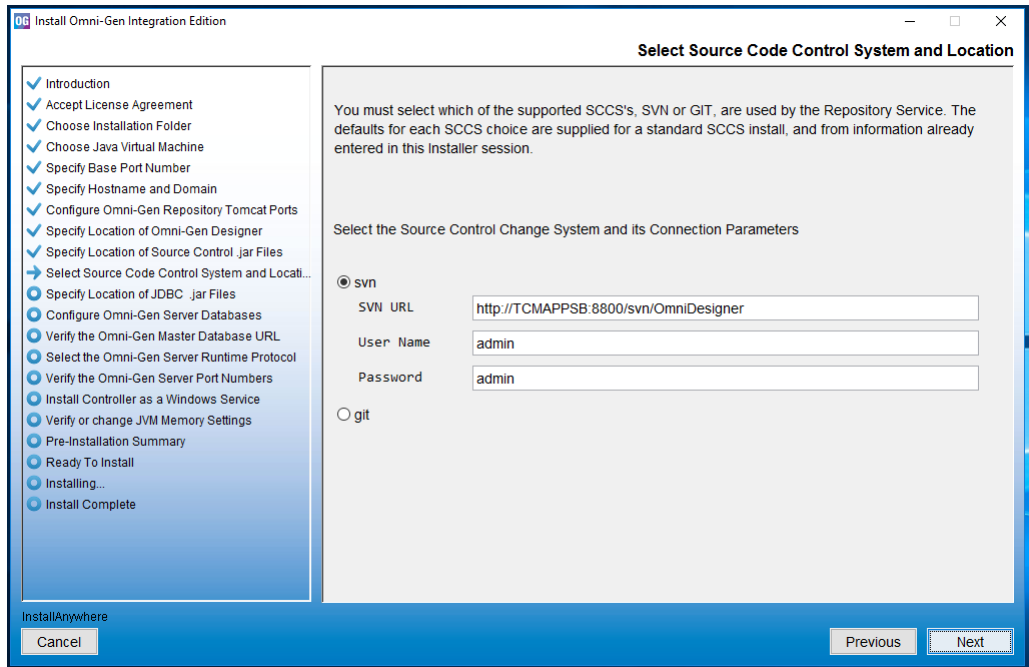
If you have not created a folder for the SCCS .jar files, then the following message displays:



If you receive this message, click *Cancel* and then create a new folder. Place the SCCS .jar files in that folder and click *Choose* in the Specify Location of Source Control .jar Files pane to navigate and select that new folder.



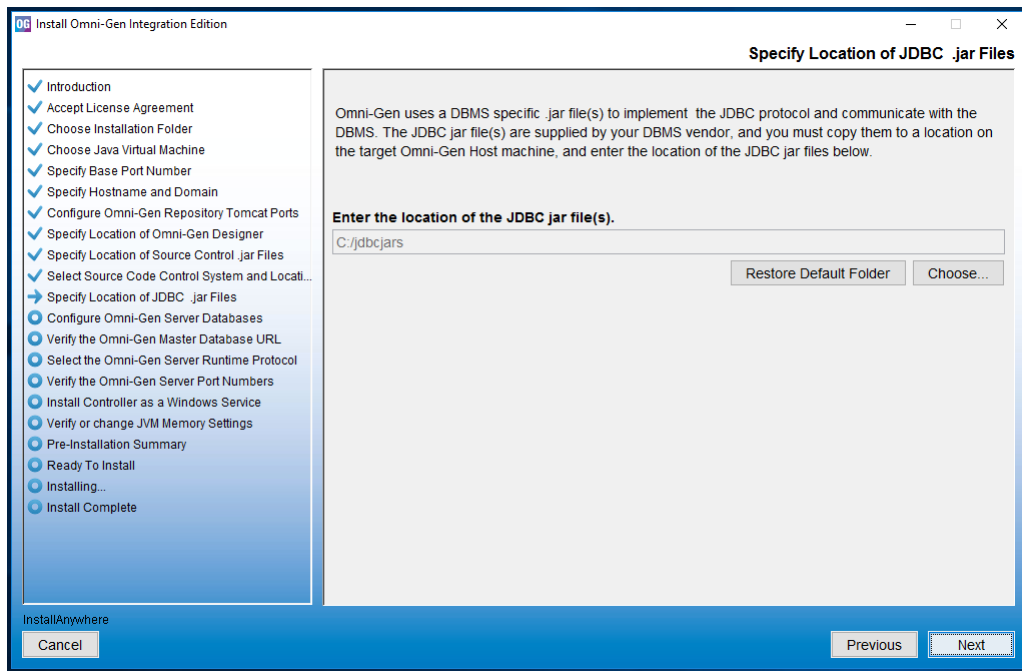
The Select Source Code Control System and Location pane opens, as shown in the following image.



15. Define the location and credentials for your source control repository by selecting either *svn* or *git*.

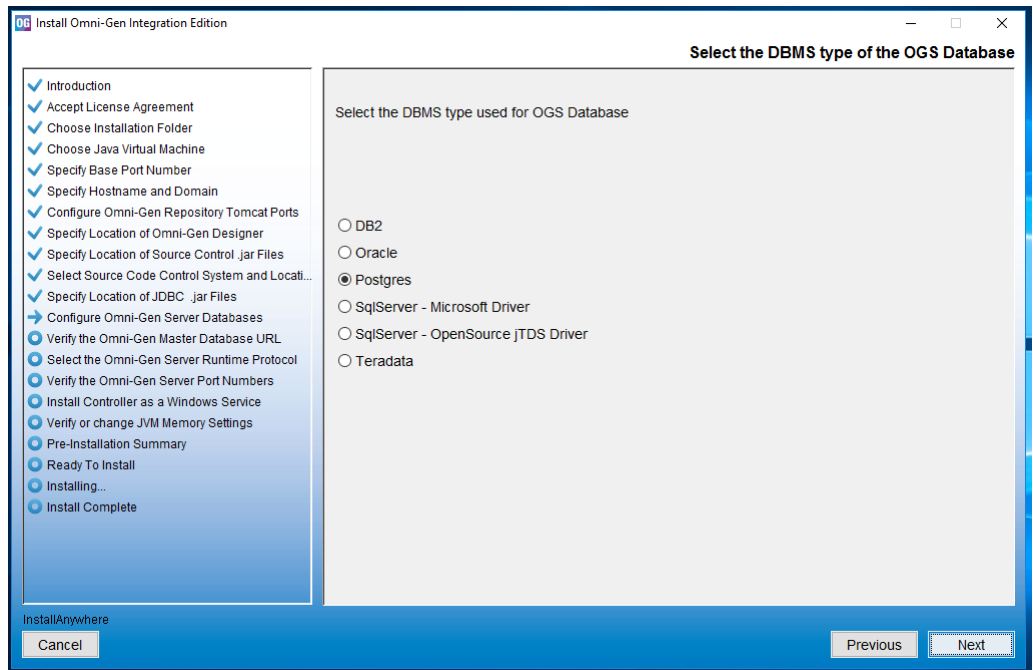
16. Click *Next*.

The Specify Location of JDBC .jar Files pane opens, as shown in the following image.



17. Specify the location of your JDBC .jar files, and then click Next.

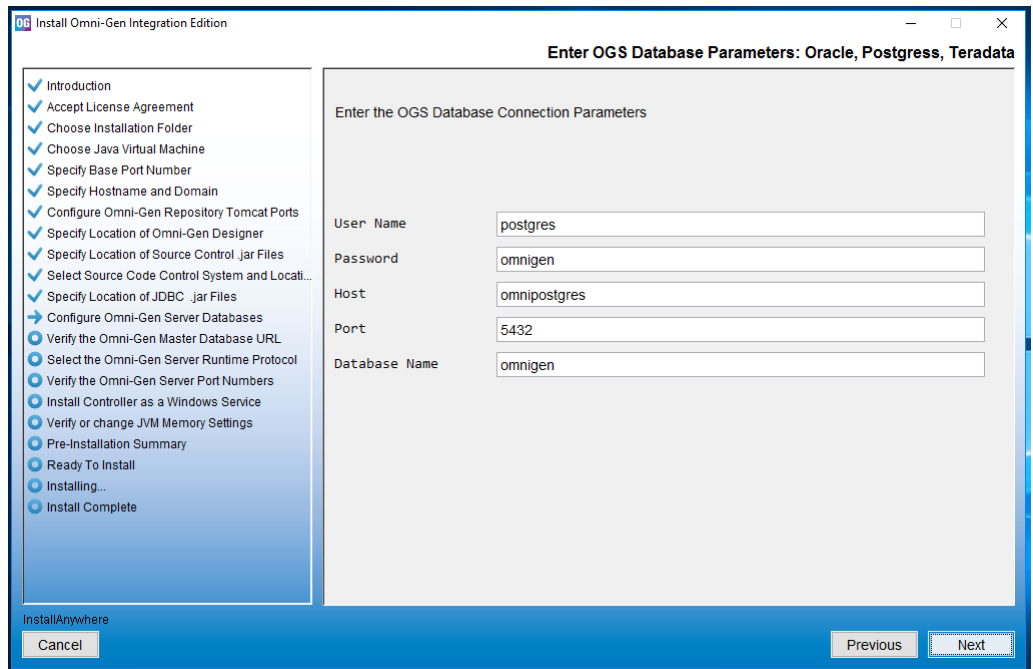
The Select the DBMS type of the OGS Database pane opens, as shown in the following image.



18. Specify the database that you want to use for the Omni-Gen Server (OGS).

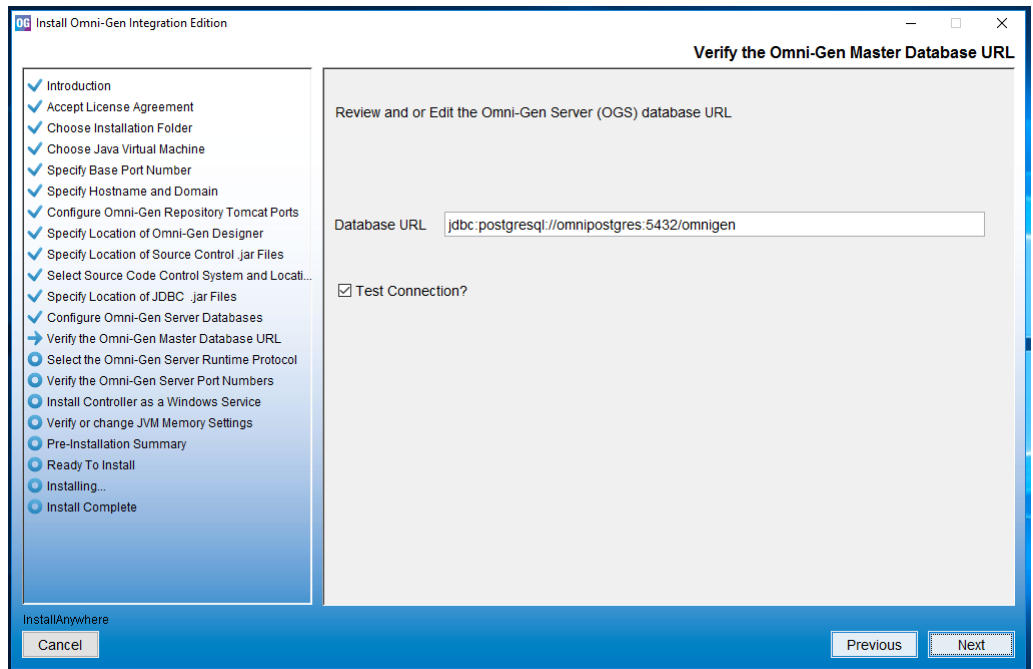
19. Click Next.

The Enter OGS Database Parameters: Oracle, Postgres, Teradata pane opens, as shown in the following image.



20. Specify the OGS parameters for the OGS database, and then click Next.

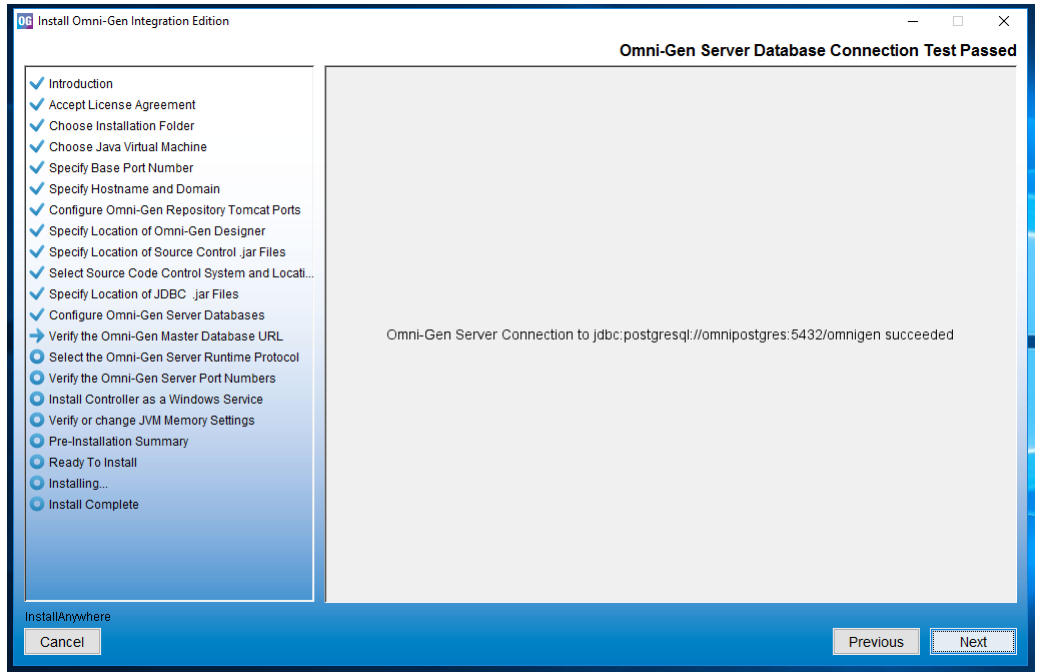
The Verify the Omni-Gen Master Database URL pane opens, as shown in the following image.



21. Verify the database URL, ensure the *Test Connection* check box is selected, and then click *Next*.

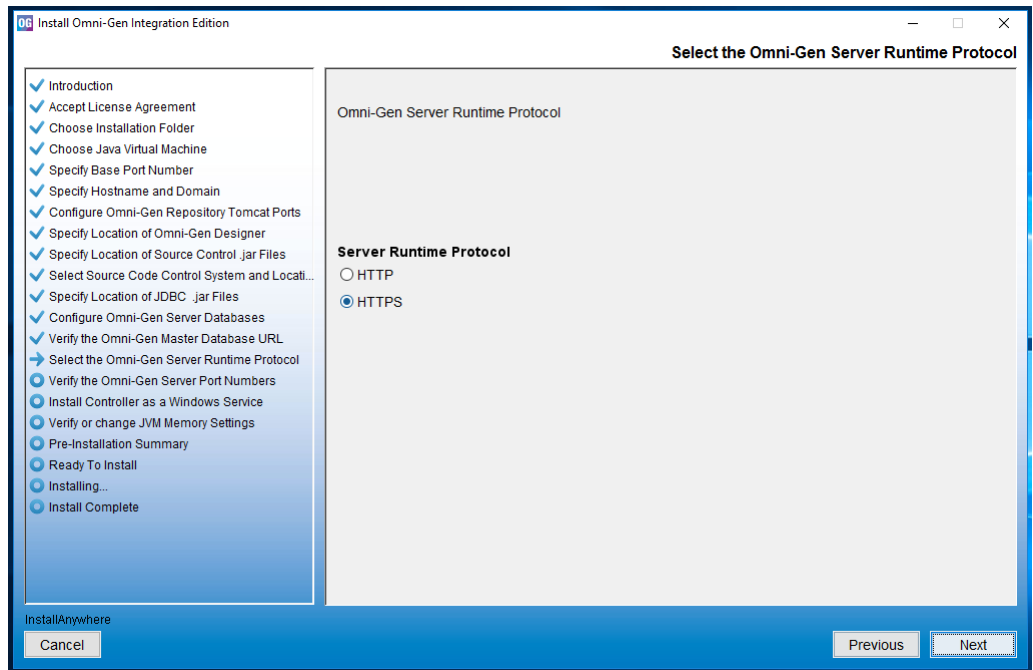
If you receive a message indicating that your connection test failed, verify that your database name exists in SQL (or the DBMS you are using).

When your database exists and the user name, password, and host are correct, the following message appears, indicating that your connection test passed for the specified database.



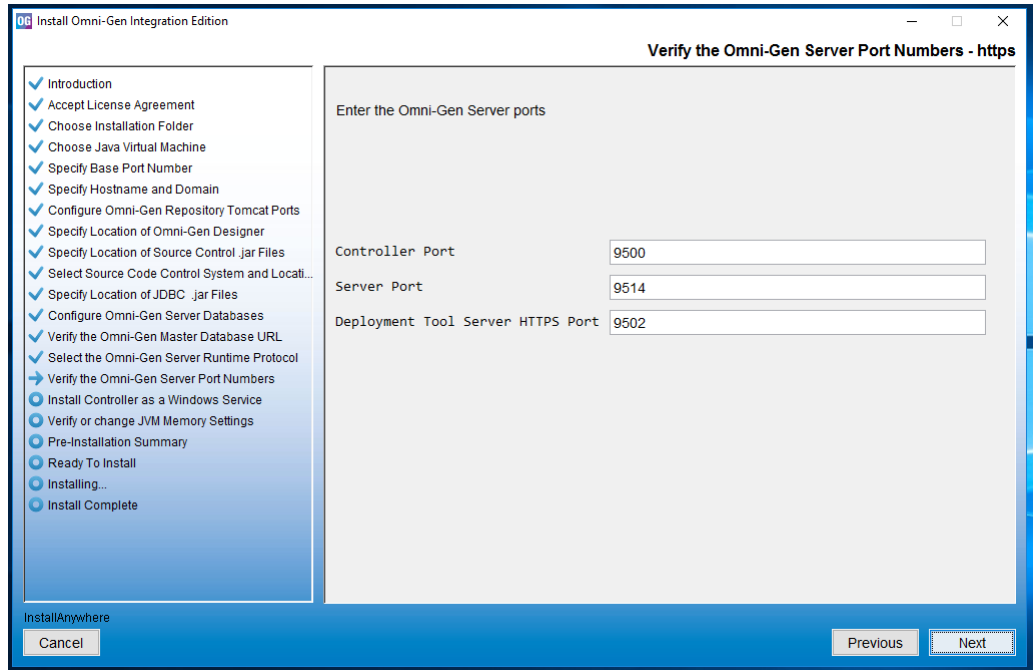
22. Click **Next** to continue.

The Select the Omni-Gen Server Runtime Protocol pane opens, as shown in the following image.



23. Select the HTTP or HTTPS protocol, and then click **Next**. The default value is HTTPS.

The Verify the Omni-Gen Server Port Numbers pane opens for your selected runtime protocol, as shown in the following image.

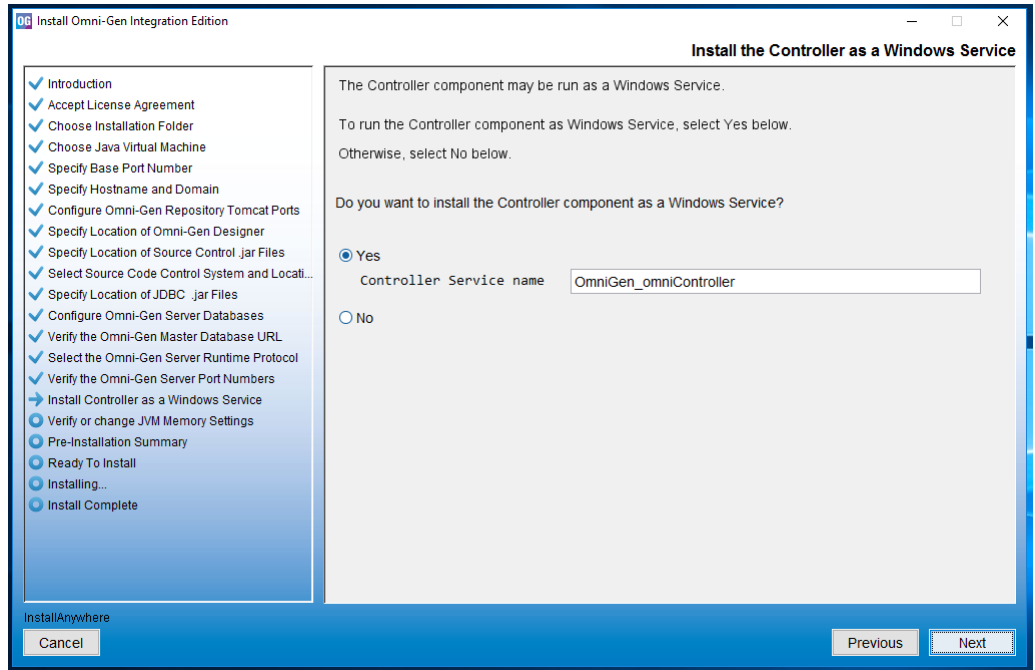


24. Accept the default values, but change them if the infrastructure manager informs you of a conflict and recommends changes to alternate available ports.

25. Click Next.



The Install the Controller as a Windows Service pane opens, as shown in the following image.

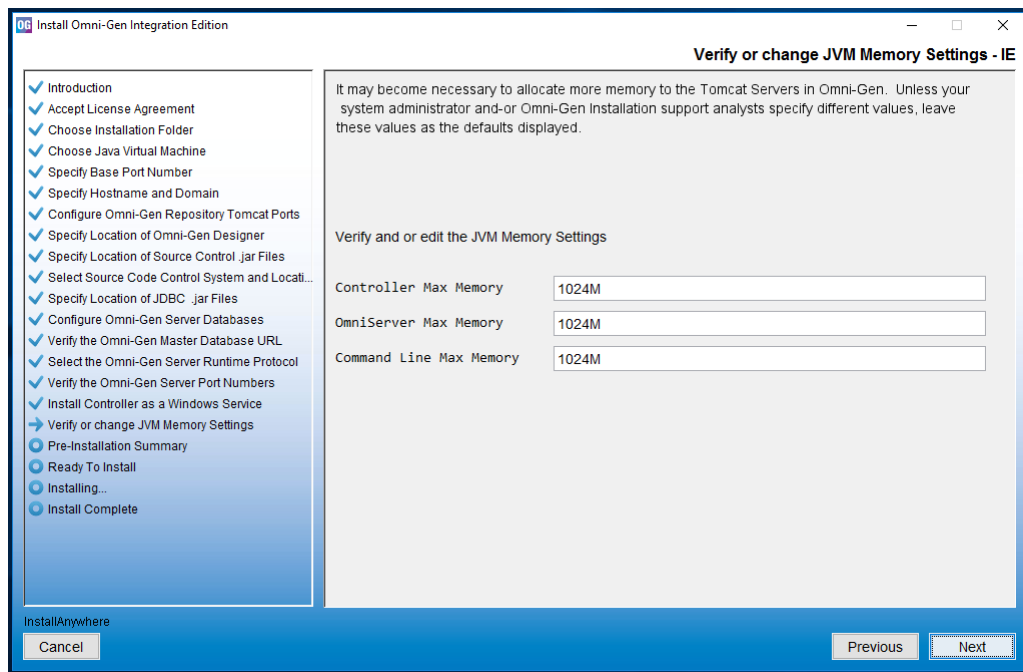


26. Select whether you want to install the Omni-Gen Controller as a Windows service. The default value is No.

**Note:** It is strongly encouraged that you select Yes for ease of administration. If you select Yes, you will be prompted for the service name. You may type the service name in the Controller Service name field, or accept the default value, *OmniGen\_omniController*.

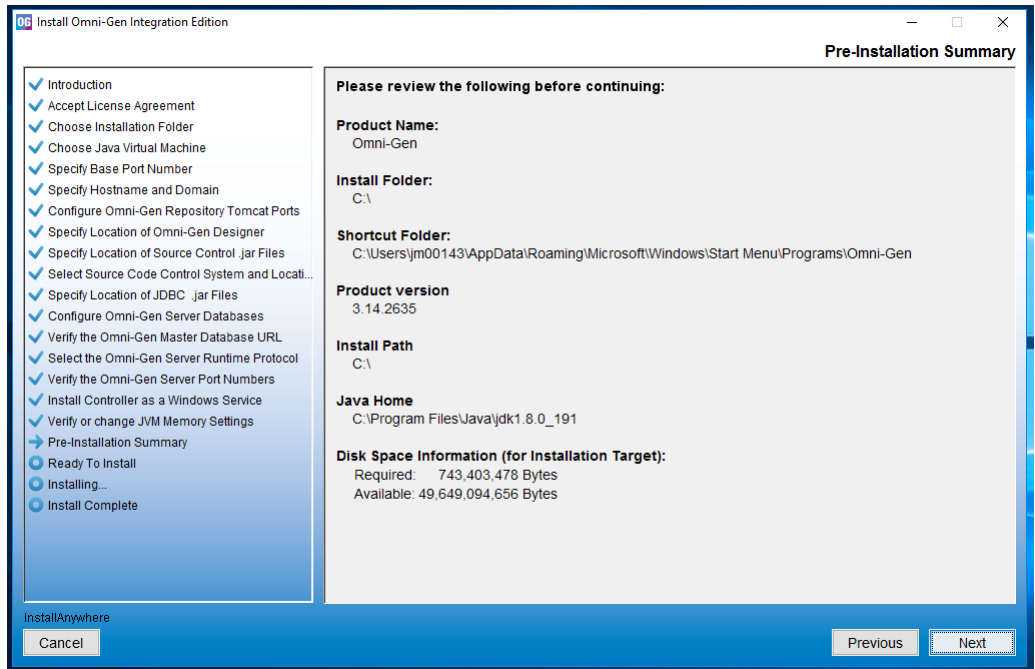
27. Click Next.

The Verify or change JVM Memory Settings - IE pane opens, as shown in the following image.



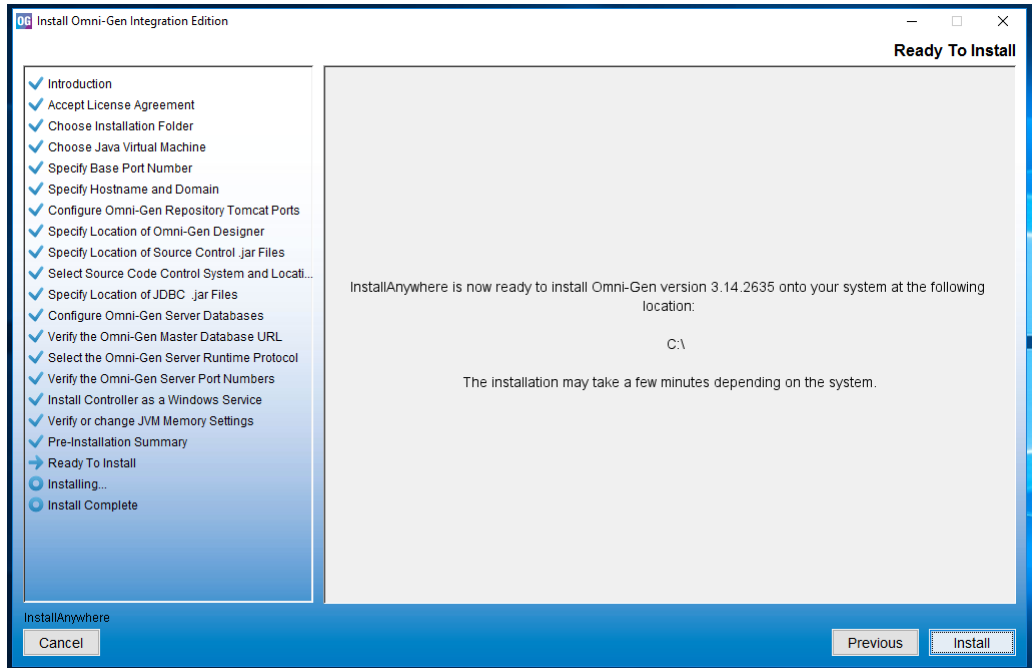
28. Change the values only if you are instructed by Information Builders or iWay Support analysts, otherwise, click Next.

The Pre-Installation Summary pane opens, as shown in the following image.



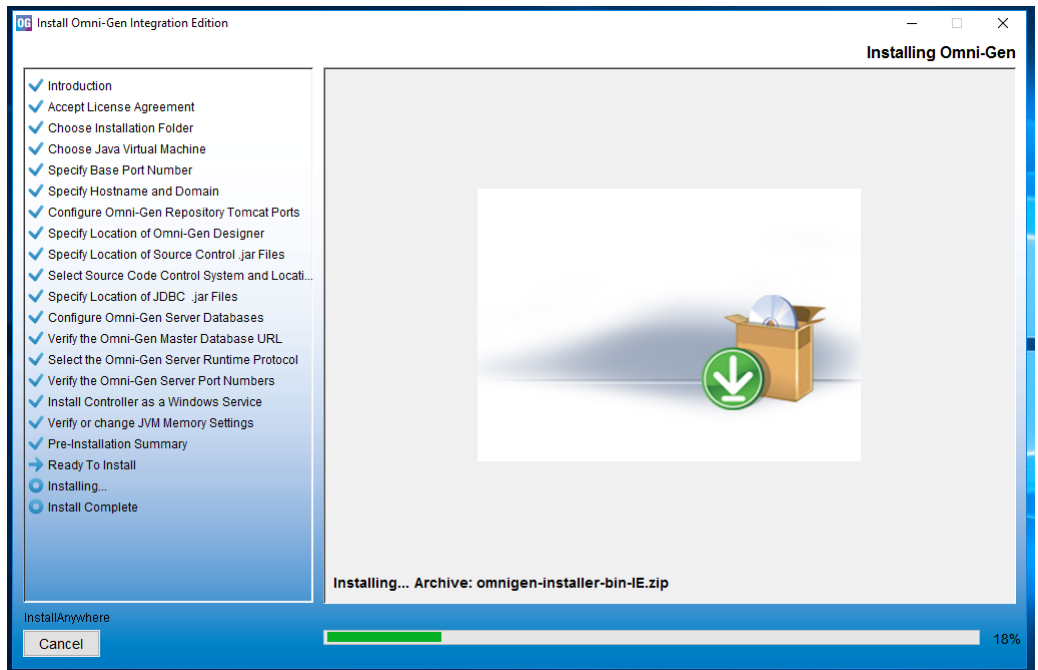
29. Review all of the settings in the Pre-Installation Summary pane, and then click *Next*.

The Ready To Install pane opens, indicating that the configuration for installation is complete, as shown in the following image.

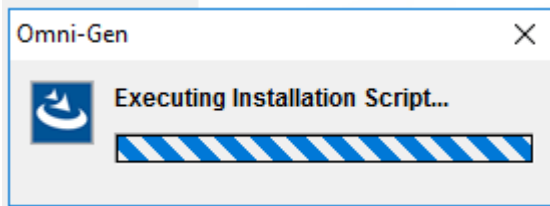


30. Click *Install* to proceed with installation.

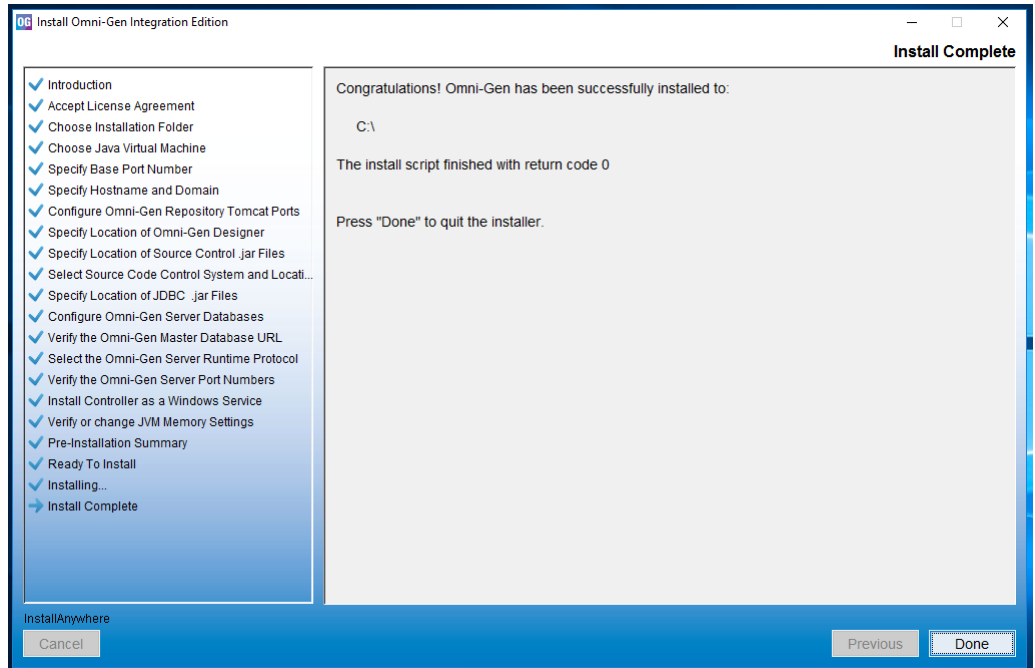
Progress of the installation is shown on the Installing Omni-Gen pane, as shown in the following image.



The Executing Installation Script popup displays towards the end of the installation process, as shown in the following image.



The Omni-Gen installation is complete when the Install Complete pane displays, as shown in the following image.



31. Click *Done* to exit the Omni-Gen installer.
32. Running the Command Prompt as administrator, start the Omni-Gen Controller by typing the following command:

```
cd \omnigen\omniserver
```

33. Press *Enter*, then type the following command:

```
omni start-controller
```

34. Press *Enter* again.

**Note:** When the installation completes, a BUILD Successful message appears, but the startup processing continues for a few minutes. You must wait for the processing to complete before proceeding to the next step.

35. Using your browser (Google Chrome is recommended), open the Omni Console by typing the following address:

```
https://yourhost.yourdomain.com:9500
```

For example:

<https://tcmappsa.ibi.com:9500>

**Note:** You cannot use *localhost* in the URL.

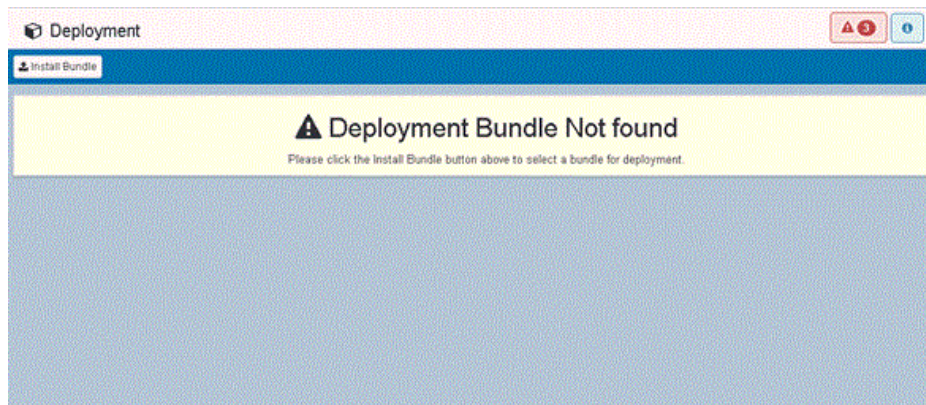
36. Log on using the following credentials:

☐ Username: **ibi**

☐ Password: **ibi**

37. Deploy a bundle by clicking *Deployment* on the left side of the navigation bar.

The Deployment Bundle Not found message displays, as shown in the following image.



**Note:** The deployment bundle is created outside of the Omni Console. It is created using the Deployment Console based on a model created in Omni Designer. The following steps assume that a deployment bundle is already created and available in your environment.

38. Click *Install Bundle*.

The Open dialog box displays.

39. Navigate to the location of your deployment bundle file.

The deployment bundle was created using Omni Designer after rules and definitions were configured.

40. Select your deployment bundle file and click *Open*.

A blank Deployment Progress window displays.

The window will start to show information and progress during the deployment process.

When the process is complete, a message displays in a banner indicating that the bundle was successfully installed.

41. Close the banner by clicking *X* in the top right corner.
42. Start the Omni-Gen Server and the related services by clicking *Services* in the left navigation bar of the Omni Console and then clicking *Start All*.

If the memory of your computer is insufficient, you can also start each individual service one at a time starting from the Utilities section and working upwards.

### **Procedure:** How to Install Omni-Gen Using Silent Mode

As a prerequisite, the Omni-Gen installer must be run at least once prior to installing Omni-Gen using silent mode. The Omni-Gen installer creates the *OmniGenInstall.properties* file, which is used by the silent mode installer. The Omni-Gen installer can then be run again in silent mode and it will use the existing properties file as input.

The silent mode installer requires the installation folder as input to locate the properties file. The installation folder is the same folder as specified in the Choose Installation Folder pane of the Omni-Gen installer. However, the folder must already exist and contain the *OmniGenInstall.properties* file. The folder structure can exist from a previous installation, or it may be newly created. No other folders are required.

Use the following command to run in silent mode:

```
OmniGenInstaller*.exe -i silent -DUSER_INSTALL_DIR=<installation folder>
```

For example, if the *OmniGenInstall.properties* file is located in the *c:\omnigen\install* folder, then you would execute the following command:

```
OmniGenInstaller*.exe -i silent -DUSER_INSTALL_DIR=c:\
```

To install Omni-Gen using silent mode:

1. Save the *OmniGenInstall.properties* file from a previous installation.
2. Create a folder called *omnigen* on your *c:\* drive. For example:  

```
c:\omnigen
```
3. Create a subfolder called *install*. For example:  

```
c:\omnigen\install
```
4. Copy the *OmniGenInstall.properties* file to the *c:\omnigen\install* folder.
5. Open a command prompt window and execute the following command:  

```
omnigen-installer-3.14.*-Windows-IE.exe -i silent -DUSER_INSTALL_DIR=c:\
```



## Omni-Gen Controller as a Windows Service

On Windows platforms, the Omni-Gen controller can be installed as a Windows service using the Omni command line tool. If installed this way, you can start and stop the controller using the command line tool or the Windows Services dialog box. The service is named *OmniGen\_controller*, by default, which can also be modified during the installation, if required. This feature is intended to support multiple installations of Omni-Gen, but not multiple installations of the controller. This Windows service can also be removed using the command line tool.

### Installing the Omni-Gen Controller as a Service

```
C:\og\OmniGenNew\omnigen\OmniServer> omni install-controller-winsvc
[-Dwinsvc.name=NAME ]
```

If the optional winsvc.name variable is not set as shown above, then the Windows service will be named *OmniGen\_controller*, by default, if not yet modified by the user. If this variable is set, then it will become the configured default. If the name contains spaces, it must be enclosed in double quotation marks ("). The Windows service will run the batch script located in:

```
<INSTALL_DIR>\OmniServer\cmd\winservice_omni_controller.bat
```

It is recommended that the service be removed (see *below*) and reinstalled if the controller configuration changes, though it is possible to modify the batch script manually instead.

### Removing the Omni-Gen Controller Service

```
C:\og\OmniGenNew\omnigen\OmniServer> omni remove-controller-winsvc
[-Dwinsvc.name=NAME ]
```

Removes the controller Windows service. If the winsvc.name variable is not set, the Windows service removed will be the one with the configured default. This will not remove the batch script located in:

```
<INSTALL_DIR>\OmniServer\cmd\winservice_omni_controller.bat
```

### Starting and Stopping

If the controller is installed as a Windows service, then the start and stop Windows service controls can be used (through either the Services dialog box or the Omni Console). However, normal start-all, stop-all, start-controller, and stop-controller commands should also work.

## Toggle Between Installation Types

The controller can toggle between installation types:

```
# Default, also set whenever the Windows service is removed
```

```
server.controller.install-type = standard
```

```
# Set whenever the Windows service is installed
```

```
server.controller.install-type = winsvc
```

The name of the Windows service, that may be changed when installed:

```
server.controller.winsvc.name = OmniGen_controller
```



# Chapter 3

## Installing Omni-Gen Integration Edition on Linux Platforms

---

This chapter describes how to install Omni-Gen Integration Edition on Linux platforms.

### In this chapter:

- ❑ [Installing Omni-Gen Integration Edition](#)
- 

### Installing Omni-Gen Integration Edition

Omni-Gen Integration Edition can be installed on a Linux server by running the *omnigen-installer-3.14.\*-Linux-IE.bin* file, which is downloaded from the Information Builders Tech Support Downloads website. This .bin file must be run from the Linux command line by a user who has the correct privileges to execute .bin installation files.

Similar to the Windows installer, the Linux installer prompts you with a series of configuration questions. The installer uses these responses to direct the installation of several components and automatically configures these components based on the responses that were provided.

#### **Procedure:** How to Install Omni-Gen Integration Edition on Linux

On Linux platforms, installing as *user root* is not recommended. Creating a dedicated User and Group with appropriate rights is preferred.

1. Copy the *omnigen-installer-3.14.\*-Linux-IE.bin* installation file you downloaded to a directory on your system.
2. Use FTP in binary mode to transfer the installation file to your Linux system.
3. Navigate to the directory containing the installation file, and ensure that you have the correct privileges to execute the installation file.

**Note:** If you do not have the correct privileges, then type the following command at the command prompt to use the execute privilege on the installation file:

```
chmod 777 omnigen-installer-3.14.*-Linux-IE.bin
```

4. Enter the following command at the command prompt to start the installation:  

```
./omnigen-installer-3.14.*-Linux-IE.bin -i console
```

**Note:** The *-i console* command runs the installer in console mode.

The installation may take a few moments to initialize.

```
Preparing to install
Extracting the installation resources from the installer archive...
Configuring the installer for this system's environment...
```

```
Launching installer...
```

```
=====
Omni-Gen                               (created with InstallAnywhere)
-----
```

```
Preparing CONSOLE Mode Installation...
```

When the installation is ready to begin, the Introduction pane opens.

```
=====
Introduction
-----
```

```
InstallAnywhere will guide you through the installation of Omni-Gen
version 3.14.2635.
```

```
It is strongly recommended that you quit all programs before continuing
with this installation.
```

```
Respond to each prompt to proceed to the next step in the installation.
```

```
If you want to change something on a previous step, type 'back'.
```

```
You may cancel this installation at any time by typing 'quit'.
```

```
PRESS <ENTER> TO CONTINUE:
```

5. Press *Enter* to continue.

The Accept License Agreement pane opens.

```
=====
Accept License Agreement
-----
```

Installation and Use of Omni-Gen version 3.14.2635 Requires Acceptance of the Following License Agreement:

INFORMATION BUILDERS, INC. HEREINAFTER "INFORMATION BUILDERS" OR "IBI")  
CLICKWRAP SOFTWARE LICENSE AGREEMENT ("CWSLA")

INFORMATION BUILDERS IS WILLING TO LICENSE THE SPECIFIC SOFTWARE CHOSEN FOR DOWNLOAD AND/OR INSTALLATION AND THE ACCOMPANYING DOCUMENTATION TO YOU ONLY ON THE CONDITION THAT YOU ACCEPT ALL OF THE TERMS OF THIS CLICKWRAP SOFTWARE LICENSE AGREEMENT.

IMPORTANT NOTICE TO CUSTOMERS ENCOUNTERING THE DISPLAY OF THIS CWSLA DURING AN INSTALL - READ ALL OF THE TERMS AND CONDITIONS CONTAINED HEREIN CAREFULLY BEFORE ACCEPTING THESE TERMS. YOU ACCEPT THE TERMS BY EITHER: (A) CLICKING ON THE BUTTON BELOW THAT ACKNOWLEDGES YOUR ACCEPTANCE/AGREEMENT, IF AVAILABLE; (B) REPLYING "YES" WHERE INDICATED, IF PROMPTED; OR (C) PROCEEDING OTHERWISE WITH THE INSTALLATION. BY PROCEEDING WITH THE INSTALLATION, YOU ACKNOWLEDGE THAT YOU ARE ACCEPTING AND AGREEING TO ALL OF THE TERMS AND CONDITIONS CONTAINED HEREIN. BY PROCEEDING WITH THE INSTALLATION, YOU ALSO ACKNOWLEDGE THAT YOU ARE ACCEPTING AND AGREEING TO THE TERMS AND CONDITIONS OF ANY APPLICABLE THIRD PARTY SOFTWARE AND LICENSES USED IN THE SOFTWARE.

A LIST OF LICENSES IS AVAILABLE AT  
[http://www.ibi.com/products/third\\_party\\_licenses/index.html](http://www.ibi.com/products/third_party_licenses/index.html).

IF YOU ARE NOT WILLING TO BE BOUND BY THESE TERMS AND CONDITIONS, YOU MUST PROMPTLY TERMINATE THE INSTALLATION PROCEDURE BY CLICKING "NO" (OR "CANCEL")

PRESS <ENTER> TO CONTINUE:

```
.
.
.
```

6. Read the terms of the license agreement and continue to press *Enter* until you reach the last section of the license agreement.

```
.
.
.
```

DO YOU ACCEPT THE TERMS OF THIS LICENSE AGREEMENT? (Y/N): y

7. Enter Y to accept the terms of the license agreement and then press *Enter* to continue.  
The Choose Installation Folder pane opens.

```

=====
Choose Installation Folder
-----

Please specify the folder which will be the root of this installation.

Where would you like to install?

    Default Install Folder: /home/usr

ENTER AN ABSOLUTE PATH, OR PRESS <ENTER> TO ACCEPT THE DEFAULT
:

```

8. Enter the desired installation location (for example, `/data/omni/product/omnigen`) or press *Enter* to accept the default installation folder and continue.

**Note:** If you entered a unique path, a prompt to confirm the path is displayed. Select *Y* to confirm and then press *Enter* to continue.

The Choose Java Virtual Machine pane opens.

```

=====
Choose Java Virtual Machine
-----

Please Choose a Java VM for Use by the installed application

->1- home/usr/java/jdk1.8.0_221/bin/java

ENTER THE NUMBER FOR THE JAVA VM, OR PRESS <ENTER> TO ACCEPT THE
CURRENT SELECTION:

```

9. Ensure that the Java version located is version 1.8 or higher, and then press *Enter* to continue.

The Specify Base Port Number pane opens.

```

=====
Specify Base Port Number
-----

Choose a port number as the starting point.

Base Port Number (Default: 9500):

```

Specifying a base port number automatically assigns a set of port numbers for use by Omni-Gen Integration Edition components, and is used when installing more than one instance of Omni-Gen Integration Edition on a single machine. If you are installing a second instance of Omni-Gen Integration Edition, or need to configure different ports to avoid conflicts with systems already deployed on your OmniGen Integration Edition host, then see your system administrator. Otherwise, press *Enter* to continue.

The Specify Hostname and Domain pane opens.

```
=====
Specify Hostname and Domain
=====

Enter the Hostname and Domain

Hostname (Default: hostname):

Domain :
```

The default host name is the machine on which you are currently installing.

10. Specify the domain, or press *Enter* to accept the default and continue.

The Configure Omni-Gen Repository Tomcat Ports pane opens.

```
=====
Configure Omni-Gen Repository Tomcat Ports
=====

The defaults suggested below allow the Omni-Gen Repository Tomcat
server to run without conflict. Unless your System Administrator
or Security Management instructs you to change these ports to avoid
other local conflicts, leave these ports set to the defaults below.

Enter the Omni-Gen Repository Tomcat information

Enter the location of the JDBC jar file(s). (Default: /home/usr/
jdbcjars)

HTTP Port (Default: 9516):

Ajp Port (Default: 9517):

HTTPS Port (Default: 9518):

Shutdown Port (Default: 9515):
```

11. Verify the ports that are indicated by default and change accordingly, if necessary. The recommendation is to press *Enter* to accept the default values.

The Specify Location of Omni-Gen Designer pane opens.

```
=====
Specify Location of Omni-Gen Designer
-----

The proposed ports and location assume a standard installation of
Omni-Gen Designer, and are supplied from data you have already entered.
Unless you have done a custom Omni-Gen Designer installation, leave
these values as proposed.

Enter Location and Parameters of the Omni-Gen Designer

Bridge Host (Default: hostname):

Bridge Port (Default: 9519):

EMF Store Port (Default: 9520):

Omni-Gen Designer Workspace Directory (Default:
    /home/usr/omnigen/OmniGenData/OmniDesignerWorkspace):
```

12. Press *Enter* to accept the default values and continue.

The Specify Location of Source Control .jar Files pane opens.

```
=====
Specify Location of Source Control .jar Files
-----

For Omni-Gen to communicate with a required Source Code Control System
(SCCS), it must use "SCCS jar files" specific to whichever of the two
SCCSs (SVN or GIT) you are using with OmniDesigner and Omni-Gen.
The SCCS jar file(s) are supplied by your SCCS vendor, and you must copy
them to a location on the target Omni-Gen Host machine, and enter the
location of the sccs jar files below.

Please enter the location of the SCCS jar file(s). (Default:
    /home/usr/sccsjars):
```

13. Change the location of the SCCS .jar files, if necessary, or press *Enter* to accept the default and continue.

The Select Source Code Control System and Location pane opens.



```

=====
Select Source Code Control System and Location
-----

You must select which of the supported SCCS's, SVN or GIT, are used
by the Repository Service. The defaults for each SCCS choice are
supplied for a standard SCCS install, and from information already
entered in this Installer session.

Select the Source Control Change System and its Connection Parameters

->1- svn
   2- git

ENTER THE NUMBER FOR YOUR CHOICE, OR PRESS <ENTER> TO ACCEPT THE
DEFAULT:

```

14. Select either *svn* or *git*, or press *Enter* to accept the default and continue.
15. Define the location and credential parameters for your source control repository, or press *Enter* to accept the default values and continue.

The Specify Location of JDBC .jar Files pane opens.

```

=====
Specify Location of JDBC .jar Files
-----

Omni-Gen uses a DBMS specific .jar file(s) to implement the JDBC
protocol and communicate with the DBMS. The JDBC jar file(s) are
supplied by your DBMS vendor, and you must copy them to a location
on the target Omnigen Host machine, and enter the location of
the JDBC jar files below.

Enter the location of the JDBC jar file(s). (Default: /home/usr/jdbcjars
:

```

16. Specify the location of your JDBC .jar files (for example, */data/omni/product/omnigen/jdbcjars*) and then press *Enter* to continue.

The Select the DBMS type of the OGS Database pane opens.

```

=====
Select the DBMS type of the OGS Database
-----

Select the DBMS type used for OGS Database

1- DB2
2- Oracle
->3- Postgres
4- SqlServer - Microsoft Driver
5- SqlServer- OpenSource jTDS Driver
6- Teradata

ENTER THE NUMBER FOR YOUR CHOICE, OR PRESS <ENTER> TO ACCEPT THE
DEFAULT:

```

17. Type the number that corresponds to the database that you want to use for the Omni-Gen Server (OGS) database, or press *Enter* to accept the default and continue.

The Enter OGS Database Parameters: Oracle, Postgres, Teradata pane opens.

```

=====
Enter the OGS Database Parameters
-----
Enter the OGS Database Connection Parameters

User Name (Default: omnigen):

Password (Default: omnigen):

Host (Default: localhost):

Port (Default: 5432):

Database Name (Default: omnigen):

```

18. Specify the DBMS-specific parameters for the OGS database, and then press *Enter* to continue.

The Verify the Omni-Gen Master Database URL pane opens.

```

=====
Verify the Omni-Gen Master Database URL
-----

Review and or Edit the Omni-Gen Server (OGS) Database URL

Database URL      (Default:
jdbc:postgresql://hostname:5432/omnigen):

```

19. Verify the database URL, and then press *Enter* to continue.

The Test Database Connection pane opens.

```

=====
Test Database Connection?
-----

Test the Database Connection?

->1- Yes
   2- No

ENTER THE NUMBER FOR YOUR CHOICE, OR PRESS <ENTER> TO ACCEPT THE
DEFAULT:

```

A test connection is made to the specified target DBMS based on the specified parameters.

If you receive a message indicating that your connection test failed, verify your DBMS parameters and that your database name exists in the DBMS you are using.

When your database exists and the user name, password, and host are correct, the Omni-Gen Server Database Connection Test Passed pane opens.

```

=====
Omni-Gen Server Database Connection Test Passed
-----

Omni-Gen Server Connection to
jdbc:postgresql://hostname:5432/omnigen succeeded

PRESS <ENTER> TO CONTINUE:

```

20. Press *Enter* to continue.

The Select the Omni-Gen Server Runtime Protocol pane opens.

```

=====
Select the Omni-Gen Server Runtime Protocol
-----

Omni-Gen Server Runtime Protocol

1- http
->2- https

ENTER THE NUMBER FOR YOUR CHOICE, OR PRESS <ENTER> TO ACCEPT THE
DEFAULT:

```

21. Select the desired server runtime protocol (HTTP or HTTPS), or press *Enter* to accept the default and continue.

The Verify the Omni-Gen Server Port Numbers pane opens for the specified Omni-Gen Server runtime protocol (HTTP or HTTPS).

```
=====
Verify the Omni-Gen Server Port Numbers https
-----
```

Enter the Omni-Gen Server ports

Controller Port (Default: 9500):

Server Port (Default: 9514):

Deployment Tool Server HTTPS Port (Default: 9502):

22. Accept the default values, but change them if your system administrator informs you of a conflict and recommends changes to alternate available ports.
23. Press *Enter* to continue.

The Verify or change JVM Memory Settings - IE pane opens.

```
=====
Verify or change JVM Memory Settings - IE
-----
```

It may become necessary to allocate more memory to the Tomcat Servers in Omni-Gen. Leave these values as the defaults displayed, unless your system administrator and Omni-Gen Installation support analysts specify different values.

Verify and or edit the JVM Memory Settings

Controller Max Memory (Default: 1024M):

OmniServer Max Memory (Default: 1024M):

Command Line Max Memory (Default: 1024M):

24. Change the values only if you are instructed by Information Builders or iWay Support analysts, otherwise, press *Enter* to continue.

The Pre-Installation Summary pane opens.

```

=====
Pre-Installation Summary
-----

Please Review the Following Before Continuing:

Product Name:
    Omni-Gen

Install Folder:
    /home/usr

Link Folder:
    /home/usr

Product Version
    3.12.2635

Install Path
    /home/usr

Java Home
    /usr/java/jdk1.8.0_221

Disk Space Information (for Installation Target):
    Required:    1,718,158,500 Bytes
    Available: 185,251,954,688 Bytes

PRESS <ENTER> TO CONTINUE:

```

25. Review all of the settings in the Pre-Installation Summary pane, and then press *Enter* to continue.

The Ready To Install pane opens.

```

=====
Ready To Install
-----

InstallAnywhere is now ready to install Omni-Gen version 3.14.2635 onto
your system at the following location:

/home/usr

The installation may take a few minutes depending on the system.

PRESS <ENTER> TO INSTALL:

```

26. Press *Enter* to begin the installation.

Progress of the installation is shown.

```

=====
Installing...
-----

[=====|=====|=====|=====]
[-----|-----|-----|-----]

=====

Please Wait
-----

Executing Installation Script...

The Omni-Gen™ installation is complete when the Installation Complete pane displays.

=====
Installation Complete
-----

Congratulations. Omni-Gen has been successfully installed to:

/home/usr

The install script finished with return code 0

PRESS <ENTER> TO EXIT THE INSTALLER:

```

27. Press *Enter* to exit (close) the installer.

You are returned to the command prompt.

28. Navigate to the *omnigen* home directory that is created.

For example:

```
/data/omni/product/omnigen
```

29. Navigate to the *omniserver* home directory that is created.

For example:

```
/data/omni/product/omnigen/omniserver
```

30. Open a terminal window and type the following command:

```
./omni.sh start-controller
```

31. Press *Enter*.

**Note:** When the installation has completed, a BUILD Successful message appears, but the startup process continues for a few minutes. You must wait for this process to complete.



## Feedback

*Customer success is our top priority. Connect with us today!*

---

Information Builders Technical Content Management team is comprised of many talented individuals who work together to design and deliver quality technical documentation products. Your feedback supports our ongoing efforts!

You can also preview new innovations to get an early look at new content products and services. Your participation helps us create great experiences for every customer.

To send us feedback or make a connection, contact Sarah Buccellato, Technical Editor, Technical Content Management at [Sarah\\_Buccellato@ibi.com](mailto:Sarah_Buccellato@ibi.com).

To request permission to repurpose copyrighted material, please contact Frances Gambino, Vice President, Technical Content Management at [Frances\\_Gambino@ibi.com](mailto:Frances_Gambino@ibi.com).



# iWay

## Omni-Gen™ Integration Edition Installer User's Guide

Version 3.14

DN3502360.0220

Information Builders, Inc.  
Two Penn Plaza  
New York, NY 10121-2898