

iWay

iWay Release Notes

Version 8.0.1 Service Manager (SM)

Active Technologies, EDA, EDA/SQL, FIDEL, FOCUS, Information Builders, the Information Builders logo, iWay, iWay Software, Parlay, PC/FOCUS, RStat, Table Talk, Web390, WebFOCUS, WebFOCUS Active Technologies, and WebFOCUS Magnify are registered trademarks, and DataMigrator and Hyperstage are trademarks of Information Builders, Inc.

Adobe, the Adobe logo, Acrobat, Adobe Reader, Flash, Adobe Flash Builder, Flex, and PostScript are either registered trademarks or trademarks of Adobe Systems Incorporated in the United States and/or other countries.

Due to the nature of this material, this document refers to numerous hardware and software products by their trademarks. In most, if not all cases, these designations are claimed as trademarks or registered trademarks by their respective companies. It is not this publisher's intent to use any of these names generically. The reader is therefore cautioned to investigate all claimed trademark rights before using any of these names other than to refer to the product described.

Copyright © 2018, by Information Builders, Inc. and iWay Software. All rights reserved. Patent Pending. This manual, or parts thereof, may not be reproduced in any form without the written permission of Information Builders, Inc.

Contents

1. iWay Version 8 Service Pack 1 (8.0.1) Integration Release	5
iWay Service Manager	5
Installation Notes	6
Migration	7
Runtime.....	7
Design Time.....	7
Deprecated Components	7
Resolved Issues	8
iWay Integration Tools 8.0.1 Update 1 (8.0.1.R20180719-1955).....	9
iWay Version 8.0.1.....	9
iWay Version 8.0.....	12
Known Issues and Considerations	18
iWay Business Activity Monitor.....	18
Process Flow Test-Run (z/OS).....	18
RTDR Object.....	19
Delimiter Value Stream Preparser (DelValStream).....	19
Updating the iWay Configuration File Metadata.....	19
WebFOCUS Support.....	19
New Features	19
Blockchain Support.....	20
iFL Functions: _left() and _right().....	20
MQ Cluster Support.....	21
JSON Path Builder.....	21
Amazon Web Services Connectors: DynamoDB.....	24
Internet of Things: MQTT Support.....	24
Twitter Connector.....	25
Channel Templates.....	26
Transformer Update.....	27
Deployment Templates.....	27
Clipboard Support.....	28
Customer Support	28

iWay Version 8 Service Pack 1 (8.0.1) Integration Release

This document provides release information for iWay version 8 Service Pack 1 (8.0.1). It is intended for all levels of users, including system integrators, application developers, and administrators. For more information on specific features, refer to the online documentation.

In this chapter:

- ☐ [iWay Service Manager](#)
 - ☐ [Installation Notes](#)
 - ☐ [Migration](#)
 - ☐ [Deprecated Components](#)
 - ☐ [Resolved Issues](#)
 - ☐ [Known Issues and Considerations](#)
 - ☐ [New Features](#)
 - ☐ [Customer Support](#)
-

iWay Service Manager

iWay Service Manager (iSM) is an integration server that ensures rapid access to timely, accurate data across all systems, processes and stakeholders – with unmatched interoperability between disparate systems and data. With iSM, all aspects of your existing infrastructure – every integration, application, and development platform – work in concert with modernized architectures to rapidly develop new business applications, and create powerful, reusable business services from existing applications. This support for modern architectures ensures a highly optimized development environment and rapid creation of internally and externally consumable services.

iSM offers end-to-end integration of the widest variety of sources, including real-time, batch, streaming, big data, structured and unstructured information, cloud-based sources, social network, and machine-generated data.

Installation Notes

This section provides installation notes for iWay version 8.0.1.

- ❑ Major releases of iWay version 8.0 and any service pack releases require Oracle Java version 8 as the minimum run-time environment. The recommended release is Java 1.8 build 152. Java versions 9 and 10 are not supported at this time.
- ❑ Major releases of iWay version 8.0 and any service pack releases require Java Cryptography Extension (JCE) Unlimited Strength Jurisdiction Policy Files, which can be obtained from the Oracle Java download.
- ❑ iWay version 8.0 can be installed on the same environment where previous versions of iWay Service Manager (6.x and 7.x) have been installed. You must follow the proper procedure to migrate an application from a previous version to iWay version 8.0. iWay version 8.0 cannot be overlaid on top of an older version, and must be installed in parallel into an empty location (directory) on the file system.
- ❑ iWay version 8.0 includes online documentation, which is located on the iWay Information Center and can be accessed using the following URL:
<http://ecl.informationbuilders.com/iway/index.jsp>
- ❑ iWay version 8.0 does not provide a 32-bit installation, only a 64-bit installation is supported. The installation requires administrative rights for installation and runtime purposes. iWay version 8.0 requires full access to the sub-directories of its installation. As a result, please ensure that the end-user has full access rights.
- ❑ On Windows platforms, a deployed iIA will create its own corresponding Windows service. This Windows service is not recreated with each iIA deployment and will retain its properties.
- ❑ The release level of iSM must match the release level of iIT. For example, if you upgrade iIT, then you must upgrade iSM to the corresponding version. iWay 8 releases no longer facilitate the use of core services, which were present in the iWay 7 framework. This is due to simplification and to ensure that the end-user always has matching design time and runtime environments to get the benefits of new features.

Migration

iWay version 8.0.1 allows you to migrate iWay Integration Applications (iIAs) that were developed in iWay 7.x environments to an iWay 8 environment. When discussing migration, it is important to distinguish between *runtime* and *design time*, as described further in this section.

Runtime

If you are not planning to make any modifications to an existing iIA, then you can simply export this iIA from your iWay 7.x runtime environment using the iSM Administration Console. You can then import the iIA into your iWay 8 runtime environment using the iSM Administration Console. This enables you to import the iIA and the corresponding deployment template. You can then deploy the iIA. The iIA will continue to run the same in your iWay 8 environment as it did in your iWay 7.x environment.

Design Time

If you need to update an existing iIA for maintenance or review, you can do so using iWay Integration Tools (iIT). Export the corresponding Integration Project from iWay 7.x to the file system or source management repository. You can then import or check-out the Integration Project into the iIT workspace of your iWay 8 environment. When the Integration Project is imported, the components will be automatically converted into iWay 8 format. Since objects have changed between iWay 7.x and iWay 8, the best attempt has been made to convert the objects accordingly. However, you may notice that some of the iWay 7.x objects show up as Service nodes in the iWay 8 process flows. However, aside from the visuals, the migrated Integration Project is fully functional. You can then build and deploy your iIA as required.

It is recommended that you review any iIAs developed using iWay 7.x to determine if the design is utilizing all of the latest features available in later releases. It is very common to discover that some parts of the iIA (even though it will continue to function as is), might benefit from a simplification as part of the update, instead of a direct migration.

Deprecated Components

This section provides a summary of deprecated components in iWay 8.

- ❑ MQSI components have been removed from the product and are no longer supported in this release. If you have a requirement for continuing support for this and related components, please contact iWay Customer Support.
- ❑ SOAP over JMS/MQ has been removed from the product and is no longer supported. For alternative approaches, you may use a direct connection to the JMS/MQ components for data processing.

- ❑ WAR-based deployment has been deprecated. The ability to create WAR packages has been removed from the iSM Administration Console. You can build iSM WAR packages using the iWay Software Development Kit (SDK). If you require WAR-based deployment support, please provide your use case to iWay Customer Support.
- ❑ The Log Event Adapter for Microsoft SQL Server has been deprecated from this release.
- ❑ The Emitter object has been deprecated from this release in iWay Integration Tools (iIT). Emitters can be used as part of the channel itself. If you have a use case for accessing Emitters in process flows, open a case with iWay Customer Support and provide full details.
- ❑ The following product components have been deprecated and removed from distribution. There are alternative approaches for achieving the required functionality or the components are deemed no longer viable.
 - ❑ Corba
 - ❑ Fix
 - ❑ Clarify
 - ❑ Tuxedo
 - ❑ BEA JDBC
 - ❑ BEA PS
 - ❑ IBO
 - ❑ Validation (an older implementation of the QA Service)
 - ❑ CS3
 - ❑ Lawson Preparser
 - ❑ Manugistics Preparser
 - ❑ CDF/CSV (an updated version is available for flat file processing)

Resolved Issues

This section provides a reference to the resolved customer cases in iWay Integration Tools (iIT) 8.0.1 Update 1, iWay version 8.0, and iWay version 8.0.1.

iWay Integration Tools 8.0.1 Update 1 (8.0.1.R20180719-1955)

This section provides a reference to the resolved customer cases in iWay Integration Tools (iIT) 8.0.1 Update 1 (8.0.1.R20180719-1955).

IRN Number	Summary
IIT-550 / 180530056	Process flows from a 7.0.7 project imported into 8.0.1 fail to compile.
IIT-539	The required MQ password field setting is not honored.
IIT-532	Wrong encoding in process flow.
IIT-565 / IDEV-38	Add the ability to drag and drop an adapter from the Integration Explorer tab to the Process Flow Designer.
IIT-556 / 180604074	Upgrading IIT from version 7 to version 8.0.1.
IDEV-37	Annotations in process flows created in version 7.0.6 are not being migrated to version 8.0.1.

iWay Version 8.0.1

This section provides a reference to the resolved customer cases in iWay version 8.0.1.

IRN Number	Summary
180308030	JMS Emitter in Iterator holds connection to queues until a process is complete
180302042	NPE when trying to SSL, enable the iSM application
180221062	First element derived from inbound CSV is being corrupted

IRN Number	Summary
180201043	com.ibi.nftp.client.XDFTPSCClient cannot be cast to com.ibi.nftp.client.XDFTPClient
180221026	What is the highest version of MQ supported by iSM 6.1.5?
180226066	Data field beginning with an unmatched apostrophe corrupts data
180223037	_length function generates an exception on missing SREG
180215016	iSM 8: Using _sreg parameters as query-parameters for the REST service
180216022	iFL call generates an exception during startup
180125046	BAM Driver generates the following error: "Error in transaction, while inserting into sreg and channel info table"
171214056	Security Provider defined for JKS KeyStore does not work when connecting to MQ using JMS
171205055	SAP listener fails on receipt of document from SAP: com.sap.conn.jco.AbapException
171208052	XDXQueryAgent does not output TREE trace in the iSM log
171218066	LDAP NFR/Change to Support SOX External Audit Compliance
171107077	iSM 7.0.7 FTP cache does not connect to FileZilla server 0.9.60.2 when minimum TLS version is set to 2

IRN Number	Summary
171130071	iIA with two SOAP listeners: One seems to be the "primary". The second listener does not work if the first listener is stopped.
171127064	LDAP Directory Provider does not support StartTLS
171115094	Secure SOAP channel does not create WSDL?
171108068	XDSFTPDirectFileTransfer missing Put File Protection: Please add
171110045	Creating a Secure Shell Provider requires an Authentication Realm to be created in the base configuration
171114032	Passing parameters from a channel to shutdown a process flow
171108034	NFR - Force a template to use the master user ID / password if not supplied in the template
171102032	JMS Emitter dropping the message in base64 format
171005039	How do I save an FTP transaction log within a process flow?
170802087	LDAP - Is there any way to add a user to an existing Active Directory group using the LDAP adapter?
170519046	NFR: LDAP password management (second part of COTY case)
170419047	MQ Emitter for Clustered Queues
170621090	BAM resubmit functionality: Queue not defined

IRN Number	Summary
161111050	BAM Correlation History query taking a lot of database resources
120153539	BAM errors when numerous User Defined columns exist
180327040	MQ Listener using SSL fails to connect to MQ after Application deployment from iIT.
180215026	Changing Content-type header does not update on second request
180207073	iIT 8: Cannot copy pre-execution / post-execution items between objects
171110048	Command console display issues in the iSM Administration Console

iWay Version 8.0

This section provides a reference to the resolved customer cases in iWay version 8.0. Some of the cases listed in the following table have also been patched to the iWay version 7.x level and have been provided as updates in iWay version 7.0.7 and higher. These resolved issues are also included in any upcoming service pack releases.

IRN Number	Summary
170322037	IPv6 addresses don't work with BAM
170920062	Secure iWay Administration Console
171017020	Need assistance determining connection setup for a BI execution object
171110017	Unable to execute the same web service twice
170628003	SWIFT 2017 - MT535 _90a tag has incorrect ordering of tags in schema

IRN Number	Summary
171010067	FTP Agent checking more than necessary directories for an absolute file path
170905002	BAM - Parse And Validate Error
170602012	FTP Dir List Agent with Creation Date and Time
170419047	MQ Emitter for Clustered Queues
160524013	IRN#160524013 xQuery in _IF iFL Compilation Error
170920037	Adapter - got exception: java.sql.SQLRecoverableException: Closed Connection[StoredProcedure
171017050	HIPAA - errors seen processing 837P EDI files with new Ebix file provided in case (170927058)
171026024	HTTP Emit Agent does not emit document when content is stream
170124088	Feature request - SFTP - Add Validate Host Keys \ Host Key Repository in service properties
170412006	URL encoding error in listener (or my understanding of how it works)
170227070	Add read to EOL to NTCP listener
170127045	Another FTP connection that will not work
170915006	Channel Redeployment issue
170907055	iSM 7.0.7-P2064.1537 - Error on "put protection" file rename after upload of initial file

IRN Number	Summary
170920080	Add another super user / group equivalent to ism.admin
170519046	NFR for role of ism.admin LDAP group in console
170907053	Since the 707 upgrade, the logs are filling up with "ActiveSession" logs at about one log-per-hour
170720085	The JCRAFT API In ISM 800 Needs To Be Updated From Version 0151 TO 0154
170713046	Our ISM/iWay environment suffers from JVM problems
171006037	HIPAA - errors seen processing 837I EDI files with old and new ebix file provided in case (170927058)
170815027	iWay Service Manager Production License Key Request
161209020	Microsoft Excel tool adapters
170324062	Need to confirm SFTP agents will work with SHA-2 (Prudential is discontinuing SHA-1 support)
170822051	iSM 7.0.5 - FTP agent (not sure which one) - logging "INFO" when I think it should be "DEBUG"
170803013	SFTP emitter - only moves 2 GB for a 4 GB file
170908058	XDFTPClientSterlingUnix - getFTPFile - double path on GET (see 170228094) ComData - Sterling Unix

IRN Number	Summary
170629085	iSM 7.0.7 - TLS FTP connection - No trusted certificate found
170809072	XDSQLInsert agent will not accept _flatof() as a value for a User Properties value
170508097	NRF - Want NHTTP listener option to generate an event for POST request
170412046	iWay Cloud Roadmap for BNS
170511059	XDFailAgent - pflow 7.0.5+, Properties has Bypass Catch Processing, XML missing nocatch PROPERTYITEM
161206067	Need a way to get Hex Values to be selectable when creating X12 data
170725031	ISM for MS Dynamics - Azure Bus
170628033	POC support for Kafka
170515062	File Listener Improper File Reprocessing (8,000+ IDOC upload to SAP)
161219101	Enhancement Request: Schedule Provider Next \ Last Run showing per selected calendar time?
170110025	Pipe with header channel is not stripping out the header record before processing
170412038	Nine digit issue in HWM listener.
170203089	XDSFTPEmitAgent not falling back to SCP like XDSFTPDirectFileTransfer does? (file is as directory?)
170228094	XDNFTPDirectFileTransfer - Not working with ComData (problem when home DIR is not ROOT?)

IRN Number	Summary
170321043	iWay is putting a double path when doing an SFTP Dir List when home folder is not root - FirstData
170202086	XDNFTPDirListAgent (ftp.theworknumber.com): Unable to setup file list; '/' is either missing...
161107007	Temp space filling up by iWay Clob queries
160518037	IRN#160518037 TPN web page is not showing anything after signing on
170516027	User can not log into FTP
170612101	iSM 7.0.7 FTP Server listing filenames with directory structure as name
170411007	nHTTPEmitAgent POST MultiPart Data Content-Type
161021032	Envoy startup issues - random?
170314012	Oracle Apps Procedures schemas are generated with invalid namespace
170103055	XDNFTPEmitAgent - Unexpected exception not triggering catch?
161104067	FTP Operator Delete: General failure: 451 Requested action aborted: session in inconsistent state
170412077	iSM 7.0.7 (and before?) File Emit does not evaluate _sreg() value when setting "Append" property
170327016	How to pass a value from a BI Object to a WebFOCUS variable

IRN Number	Summary
170127001	Support STR-Transform for XML Digital Signature
161220053	iWaySDK 7.0.6 won't build due to error not encountered during build in iIT or 7.0.4
161206022	Cannot read and then delete a file in the same process flow using the Samba agent
160919086	RN#160919086 A Oracle SQL query that works in Oracle cannot be run by iSM SQL Object
160804006	IRN#160804006 Salesforce Adapter's persistence not working as expected
160723001	IRN#160723001 _iwexists - (anoy exist rrelated IFL) does not return true if sreg has blank value
160810059	IRN#160810059 iwayworkdir in console resolving to "base" path instead of iIA path
160720094	IRN#160720094 Error: Error doing runtime transform [xslt]: Document construction [string] failed
123623515	IRN#23623515 Force array on JSON objects
171114041	BAM 7.0.6 anomaly: La conversion d'un type de données varchar en type de données datetime
170829084	Hexadecimal to Text & Vice-versa
171116029	Encountering Invalid Iteration Semantics Error Termination of Process Flow
161221066	Specify SSL Key/Trust-store Alias for SOAP Server

IRN Number	Summary
170825068	Transforming from XML to HTML tables only first table gets column HDR definition
170206001	IRL:Testing IRN
170915021	Transform failing to work when using the word Provisionsempfänger in a constant value
170829084	CLONE - Hexadecimal to text and vice versa
170329021	iSM Decision Switch Routing Not Working
170331078	XML to JSON inconsistency handling digits as string

Known Issues and Considerations

This section describes known issues and considerations in iWay version 8.0.1.

iWay Business Activity Monitor

iWay Business Activity Monitor (BAM) requires the creation of a new database. An existing iWay BAM database (created in iWay version 7.x) can be archived for future access through standard database utilities. There are known issues with the resubmit functionality of iWay BAM in iWay version 8.0, due to repackaging into the application structure. The Windows installer does not include the repackaged application components, but still includes the prior available application archives. This will be resolved in the next product update. For more information or if you have any questions, please contact iWay Customer Support.

Process Flow Test-Run (z/OS)

On z/OS platforms, a *test run* for a process flow from iWay Integration Tools (iIT) can be performed only against the local configuration or a remote configuration. The *test run* against a test server is not supported at this time.

RTDR Object

There is no RTDR object in iWay version 8.0, which will be returned to the product in a future update. In the meantime, you can access the same functionality by adding a Service object into a process flow, and configure it to call an SQL Batch Insert Iterator (XDIterSQLBatchAdd).

Delimiter Value Stream Preparser (DelValStream)

This preparser has been updated to follow common standards requiring string values to be specified using double quote (" ") characters. The use of single quote (' ') characters is not supported at this time, since data can use single quotes as part of the data field itself and not as a delimiter, which results in a parsing issue. In future releases, a parameter setting may be introduced that will allow users to specify the type of quotes (single or double) to use.

Updating the iWay Configuration File Metadata

Metadata for the iWay configuration file, which contains definitions for generics/configurations, can be updated to the latest version using the Refresh option. Doing so will bring in the options for newer components that are available in iWay version 8.0.1. The Refresh option is available by right-clicking the iWay configuration file. If you create a new configuration from within a process flow, then this step is not required. In this case, metadata for the iWay configuration file will be refreshed automatically for any components that are used.

WebFOCUS Support

Due to internal communication changes with the WebFOCUS Reporting Server, iWay provides limited support for the later versions of WebFOCUS. Specifically:

- ❑ **iWay WF Object.** Supports WebFOCUS version 80xx. For WebFOCUS version 82xx, this object supports application folders, but virtual folders are not supported.
- ❑ **ReportCaster Object.** Supports WebFOCUS Reporting Server version 80xx. The ReportCaster object does not support WebFOCUS Reporting Server version 82xx due to internal compatibility issues, which are being researched.
- ❑ **ETL Object.** Supports WebFOCUS version 80xx and version 82xx.

New Features

This section provides a summary of new features available in iWay Service Manager (iSM) and iWay Integration Tools (iIT) in version 8.0.1. For more information, refer to the online documentation.

Blockchain Support

iSM version 8.0.1 offers integrated support for permissioned/private blockchain applications. The proven integration capabilities of iSM work with and alongside blockchain platforms, including Hyperledger Fabric and Ethereum. Using these blockchain application integration capabilities, iSM can acquire messages from the outside world, existing applications, or other sources, then process them and share the results with other applications. iSM version 8.0.1 lays the foundation for a quickly deployable, easily maintainable, service and event-oriented blockchain architecture, as well as a mechanism to make configuration easier for a user to understand.

Key Benefits:

- ❑ Reduction in development costs and time, and faster implementation into the blockchain workflow.
- ❑ Integration with peers (nodes) on the network, and the ability to transfer detailed posts and queries between peers and iSM.
- ❑ Capability for synchronous and asynchronous transaction posting to the blockchain, which directly tackles scalability, transaction speed, and throughput concerns.
- ❑ Linking multiple types of blockchains together.
- ❑ Graphical building of process flows with full integration and configuration through adapters.
- ❑ Ability to keep transactions in order, prior to posting a sequence of transactions.
- ❑ Better visibility of the workflow process with real-time exchanges of events and documents.
- ❑ Customize components through a wizard to simplify component use.
- ❑ Metadata and streaming analytics.
- ❑ Unique queries and custom event handling.

iFL Functions: `_left()` and `_right()`

This release introduces two new iWay Functional Language (iFL) functions, `_left()` and `_right()`.

`_left()`: Leftmost Substring

The `_left()` function extracts the leftmost substring from an input string. It is equivalent to using the `_substr()` function from the left position (0), but simpler for many cases.

input	string	The string value to be operated upon.
length	integer	Length of the substring desired.

`_right()`: Rightmost Substring

The `_right()` function extracts the rightmost substring from an input string. It is equivalent to using the `_substr()` function, but avoids the need to compute the starting position.

input	string	The string value to be operated upon.
length	integer	Length of the substring desired.

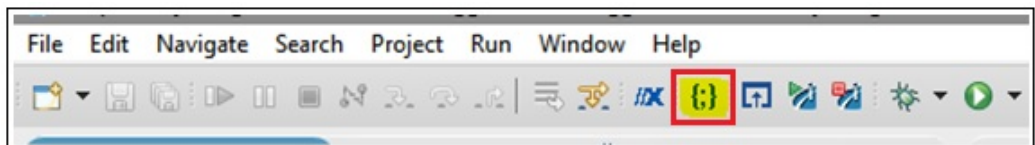
MQ Cluster Support

This release enables an application to place a message onto the queue, which belongs to a queue manager other than the one the service is connected to, but is part of the same MQ cluster. This enables the application to communicate to a cluster rather than a singular end-point.

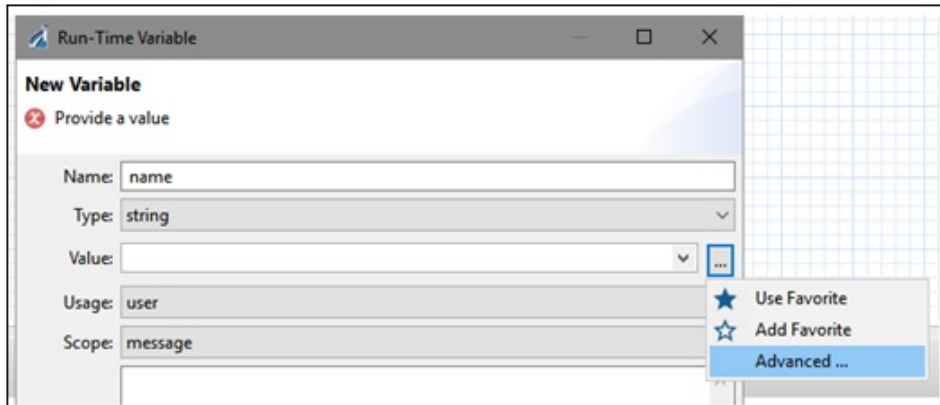
JSON Path Builder

iIT version 8.0.1 introduces the JSON Path Builder, which allows you to import a sample JSON-formatted document and visually build the corresponding JSON path function to retrieve a specific element. The JSON Path Builder functions similar to the previous XPath builder and is accessible from the iIT toolbar, and the Advanced variables section.

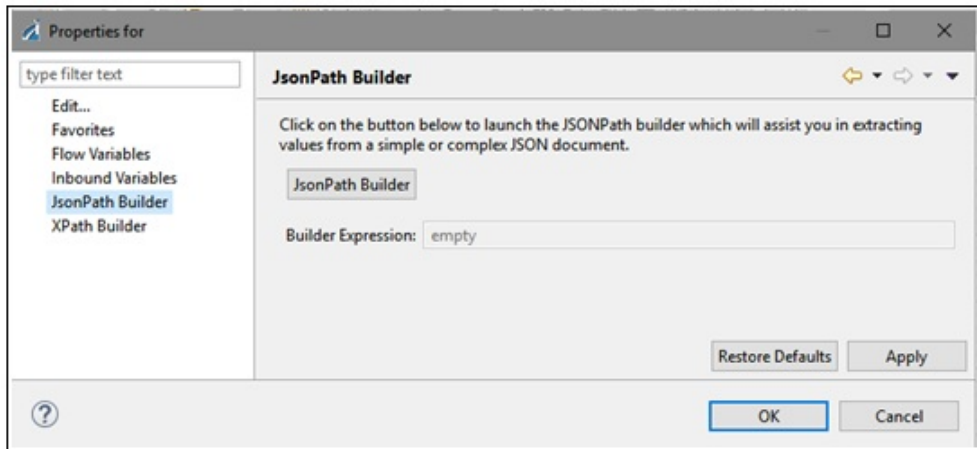
The following image shows how you can access the JSON Path Builder from the toolbar in iIT:



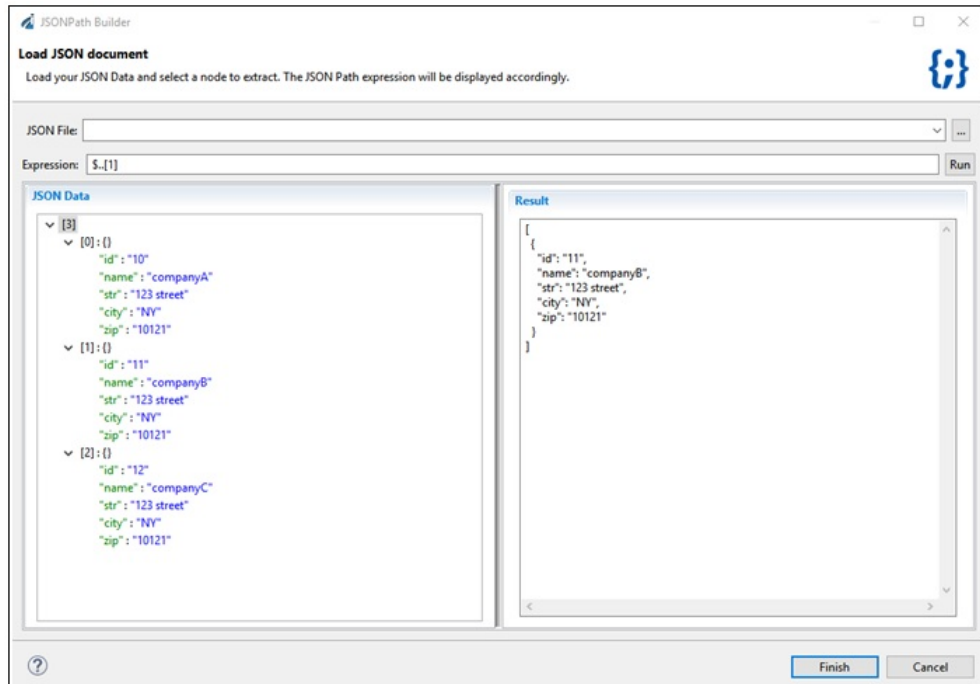
The following image shows how you can access the JSON Path Builder for a value using the Advanced submenu in the Run-Time Variable dialog.



Clicking Advanced opens the Properties dialog opens. Click *JsonPath* Builder, as shown in the following image.



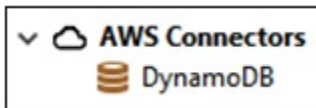
The created function can then be used as part of the parameter configuration. It is important to note that some of the services/objects take in just the JSON expression as its parameter, while others require the `_jsonpath()` function to be used. The JSON Path Builder is designed to provide you with assistance when creating a JSON expression.



The key rule to keep in mind here is that if the object/service is working on the JSON directly (for example the JSON Iterator), then it requires just an expression as its parameter where applicable. However, if the value is to be used as part of the variable configuration, then you require an iFL function, such as `_jsonpath()`.

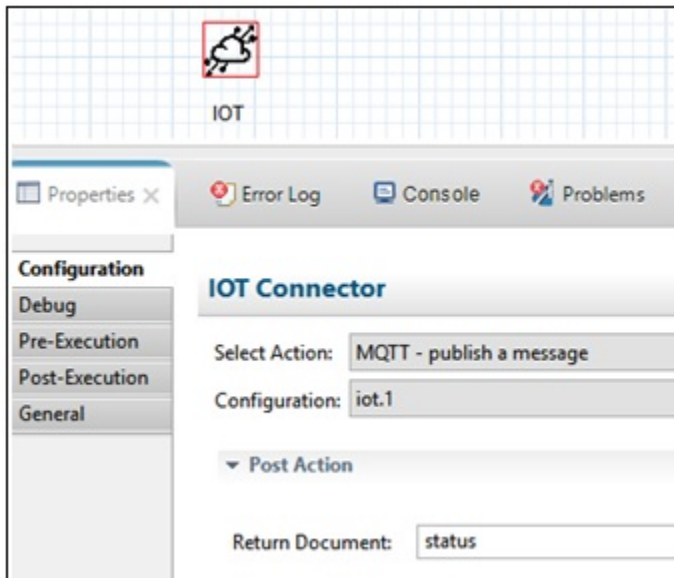
Amazon Web Services Connectors: DynamoDB

iIT version 8.0.1 introduces support for the Amazon Web Services (AWS) connector for DynamoDB. This is just one of the first connectors in a series that will expose more AWS-based connectors in future releases. The DynamoDB connector can be accessed under the AWS Connectors category in the Object palette.



Internet of Things: MQTT Support

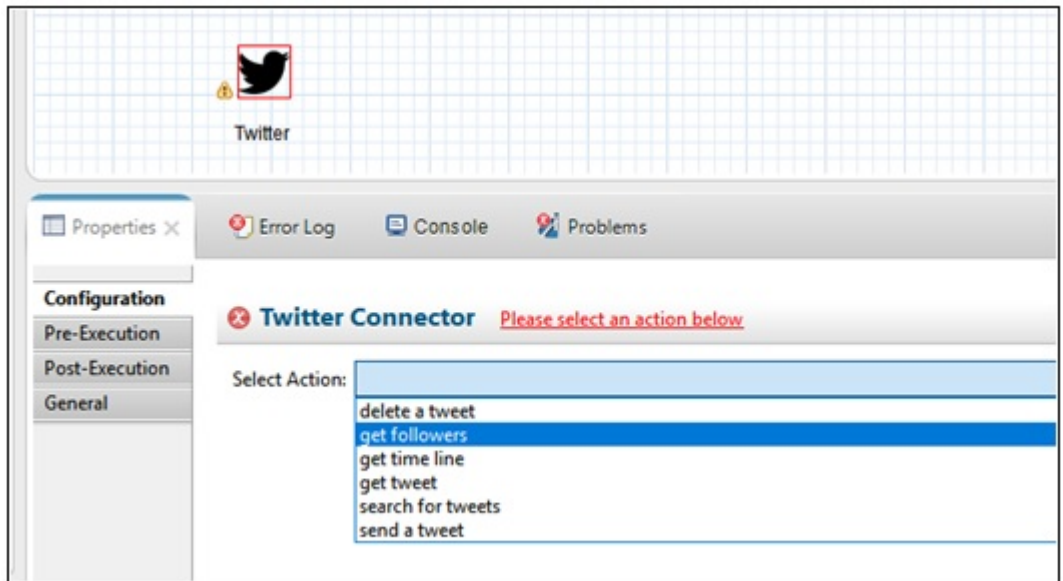
This release introduces a new Internet of Things (IoT) connector, which hosts the support for MQTT (Message Queuing Telemetry Transport) communication. It enables an application to publish a message through the MQTT protocol. This is just one of the first IoT-based supporting protocols being supported in the IoT integration series.



There is also a corresponding MQTT listener available for configuration in the Channel Builder. The MQTT listener enables an application to receive messages through MQTT from external systems.

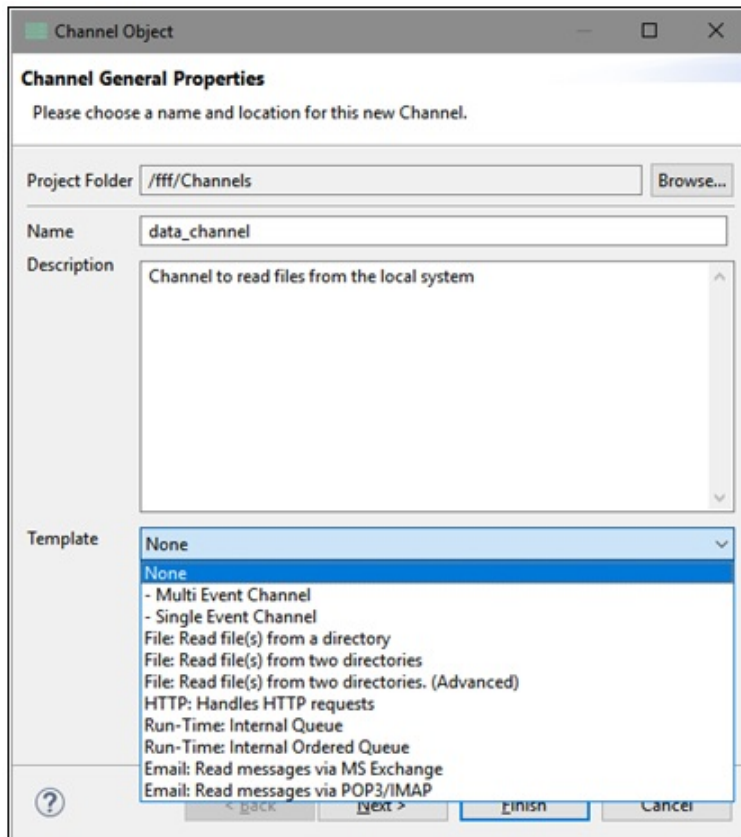
Twitter Connector

This release introduces a new Twitter connector, which enables an application to integrate with social media sources. It supports an array of popular Twitter actions, such as getting and sending tweets, in addition to following and managing.



Channel Templates

This release introduces the concept of pre-loading a channel template to create a channel with a specific structure. For example, if you require a simple file-based channel, then select the template from the Template drop-down list. If you require a channel with multiple types of inputs, then you can select the corresponding template as well. The Template drop-down list can be accessed in the Channel Builder, during the creation of a new channel, as shown in the following image.



This will create a structure of the channel based on the selected channel template, and allow you to simply fill in the business logic and configuration values.

Transformer Update

The Transformer in iIT has been updated to support the test run of a transformation against a test server. This allows you to test run in Transformer similar to the way you can test run process flows. The test run facility in Transformer has also been updated to include HTTPS support for the master configuration. It is important to note that the configuration must have the proper SOAP listener enabled with SSL for the communication. This is the same approach, which has been taken for supporting HTTPS-based test runs for process flows in prior releases.

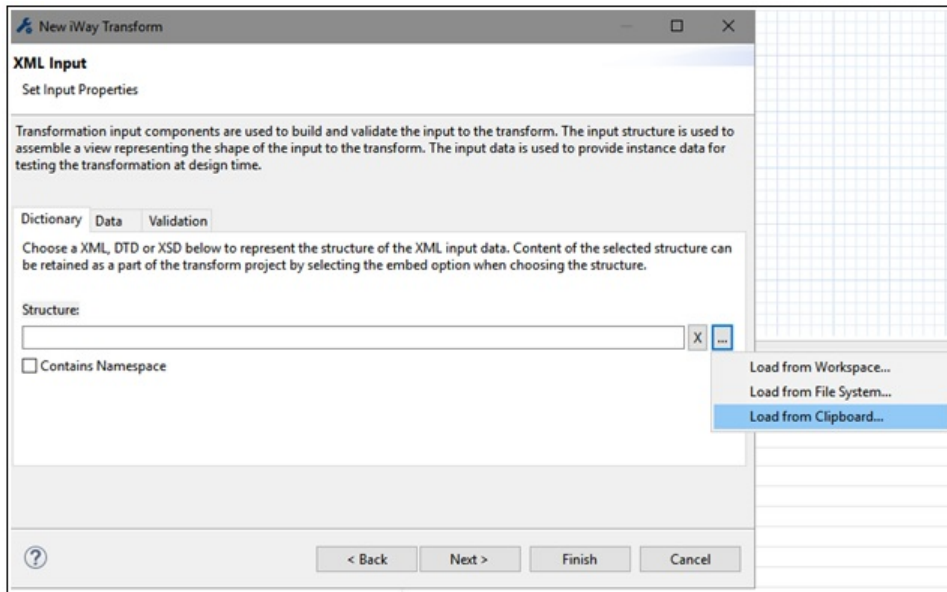
Deployment Templates

The iIT-based deployment templates have been updated to include those components which were previously available only in the iSM Administration Console. The new components include BAM and TPM configuration, Activity Facilities, Correlation Facilities and update to the security providers to be inline and reflective of all the features available in the iSM console. This should allow you to do all of your development in iIT, including template creation, without having to use the iSM Administration Console for development purposes.

If you are migrating from iWay version 8.0.0, and would like to reuse an existing Integration Project that was also created in iWay version 8.0.0, create a new template to get access to the additional components. You can also create a new Integration Project, which will enable you to create new templates.

Clipboard Support

Many components in iIT have been updated to support the loading of data files from the system clipboard in addition to loading from the workspace or file system. This enables you to simply copy and paste your data, without having to save it separately to the file system. You will notice the new option (*Load from Clipboard*) in many iIT components including Transformer (as shown in the following image), JSON Path Builder, and others.



Customer Support

Do you have questions about iWay version 8.0.1?

Join the Focal Point community. Focal Point is our online developer center and more than a message board. It is an interactive network of more than 3,000 developers from almost every profession and industry, collaborating on solutions and sharing tips and techniques, <http://forums.informationbuilders.com/eve/forums>.

You can also access support services electronically, 24 hours a day, with InfoResponse Online. InfoResponse Online is accessible through <https://techsupport.informationbuilders.com>. You can connect to the tracking system and known-problem database at the Information Builders support center. Registered users can open, update, and view the status of cases in the tracking system and read descriptions of reported software issues. New users can register immediately for this service. The technical support section also provides usage techniques, diagnostic tips, and answers to frequently asked questions.

Call Information Builders Customer Support Services (CSS) at (800) 736-6130 or (212) 736-6130. Customer Support Consultants are available Monday through Friday between 8:00A.M. and 8:00P.M. EST to address all your questions. Information Builders consultants can also give you general guidance regarding product capabilities and documentation. Be prepared to provide your six-digit site code (xxxx.xx) when you call.



Feedback

Customer success is our top priority. Connect with us today!

Information Builders Technical Content Management team is comprised of many talented individuals who work together to design and deliver quality technical documentation products. Your feedback supports our ongoing efforts!

You can also preview new innovations to get an early look at new content products and services. Your participation helps us create great experiences for every customer.

To send us feedback or make a connection, contact Sarah Buccellato, Technical Editor, Technical Content Management at Sarah_Buccellato@ibi.com.

To request permission to repurpose copyrighted material, please contact Frances Gambino, Vice President, Technical Content Management at Frances_Gambino@ibi.com.

iWay

/ iWay Release Notes

Version 8.0.1 Service Manager (SM)

DN3502314.0718

Information Builders, Inc.
Two Penn Plaza
New York, NY 10121-2898

