

## Loading and Publishing an iWay Integration Application Using iWay Integration Tools

This topic describes how to load and publish an iWay Integration Application (iIA) using iWay Integration Tools (iT). Specifically, this how-to will walk you through the following e-Business usage example:

1. Importing a preconfigured EDI X12 workspace.
2. Creating a template in iT.
3. Importing an Ebix.
4. Publishing the iIA.
5. Deploying the published iIA from the iSM Administration Console.

There are also several tips and usage considerations included at the end of this document.

iWay Integration Applications (iIAs) provide for application packaging and migration across various deployment environments (for example, Development, QA, Production, and so on). This allows you to ensure the integrity of an application during its entire life cycle.

Key features and advantages that are provided through iIAs include:

- Usage of standard iWay Service Manager (iSM) components to provide a seamless integration with existing application life cycles.
- Eliminates the need for most custom integration code.
- Simplifies the overall process of designing and maintaining iIAs through a user-friendly GUI interface within iT and the iSM Administration Console.
- Rapid deployment of iIAs into key environments (for example, Development, QA, Production, and so on).

---

### Prerequisites

Before continuing, you must download the *X12\_usr\_samples.zip* file containing EDI X12 user sample workspace from the Information Builders Technical Support Center:

<https://techsupport.informationbuilders.com>

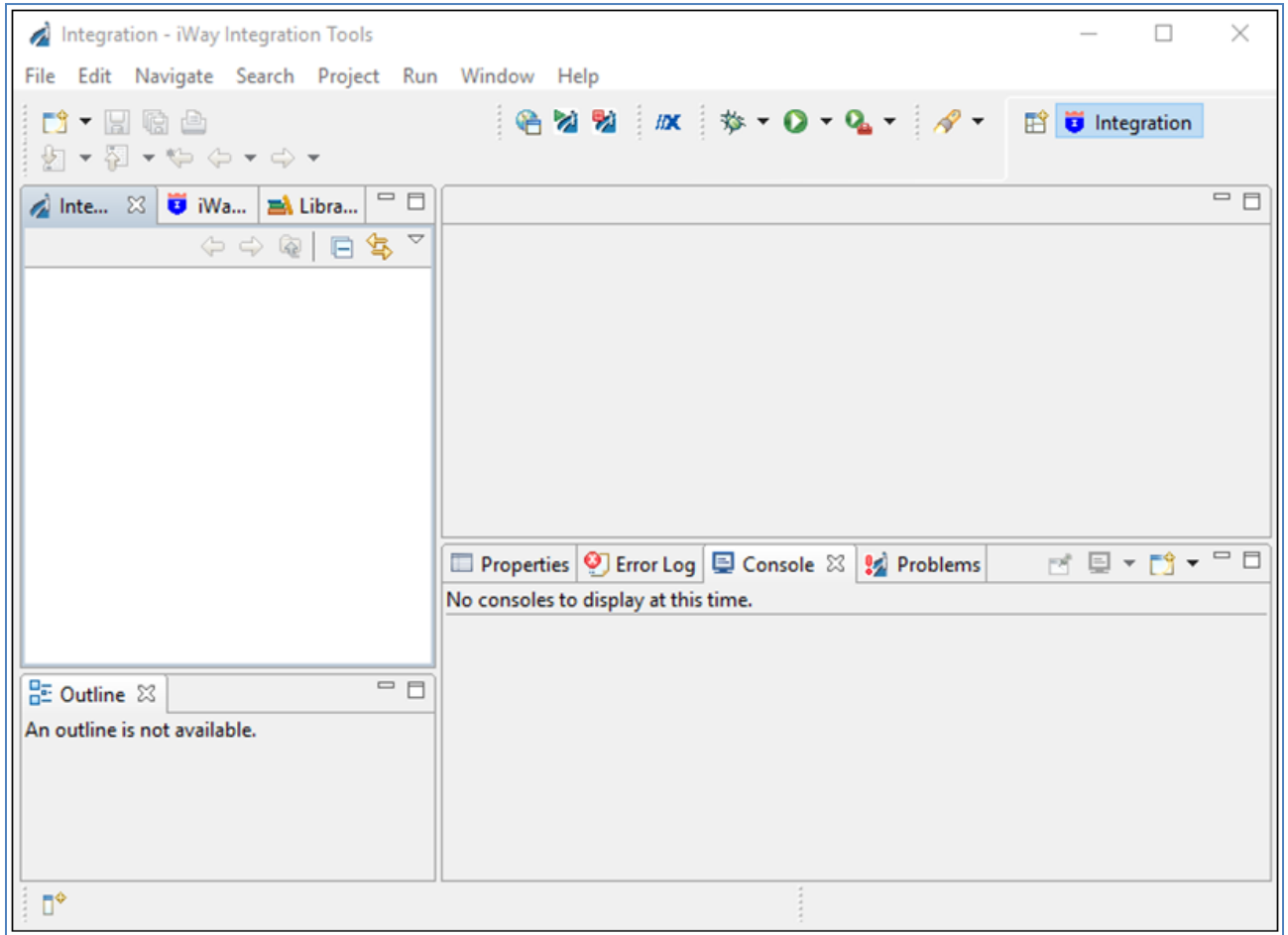
The *X12\_usr\_samples.zip* file contains the following files:

- X12\_Accelerator.zip
- X12\_usr\_samples\_iT\_workspace.zip

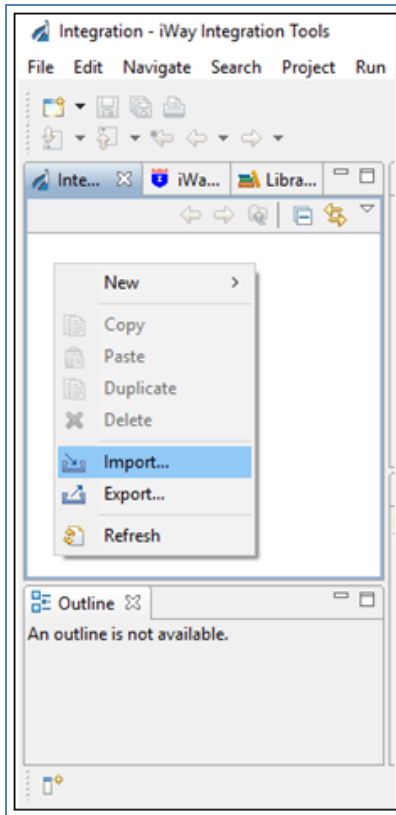
## Importing a Preconfigured EDI X12 Workspace

This section describes how to import a preconfigured EDI X12 workspace into iWay Integration Tools.

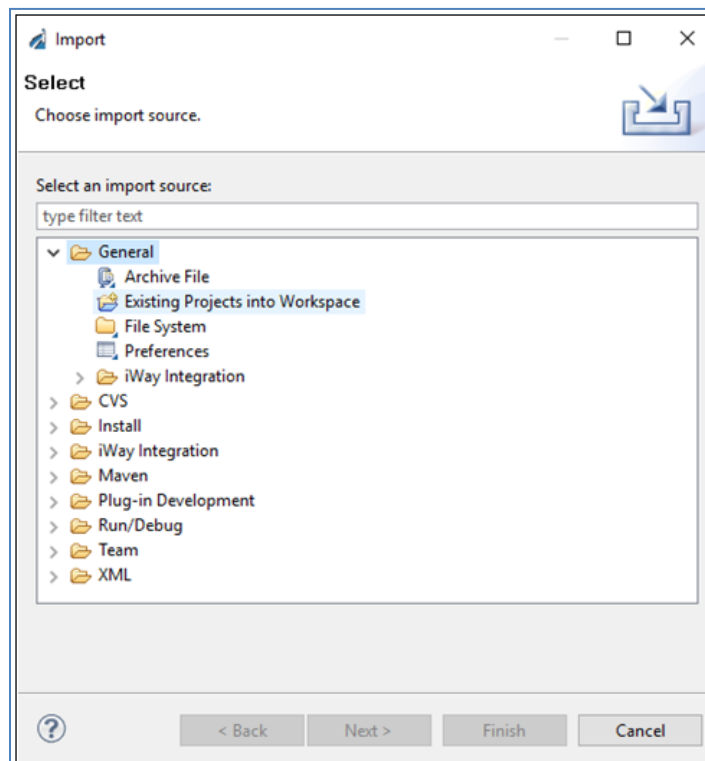
1. Open iWay Integration Tools (iIT).



2. Right-click anywhere inside the Integration Explorer tab and select *Import...* from the context menu, as shown in the following image.



The Import dialog opens, as shown in the following image.



3. Expand the *General* folder, select *Existing Projects into Workspace*, and then click *Next*.

The Import Projects pane opens.

4. Click *Select archive file* and then click *Browse*.

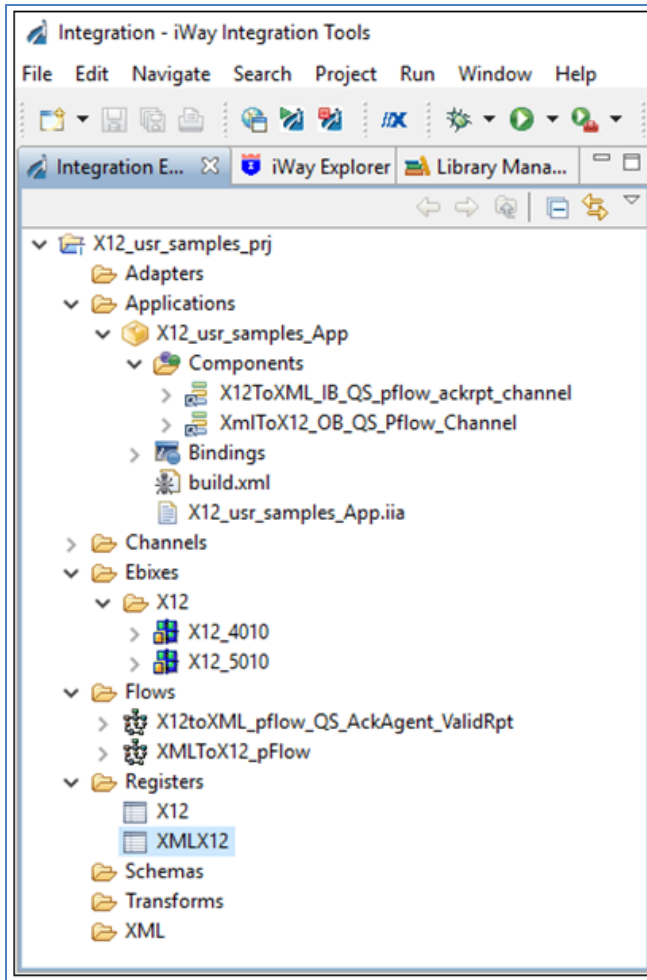
The Select archive containing the projects to import pane opens.

5. Select the *X12\_usr\_samples\_iIT\_workspace.zip* file and click *Open*.

You are returned to the Import Projects pane.

6. Click *Finish*.

The EDI X12 user samples are loaded into your iIT workspace. The imported workspace contains an iIA (called *X12\_usr\_samples\_App*), which includes two channels in order to process inbound and outbound EDI X12 message types.



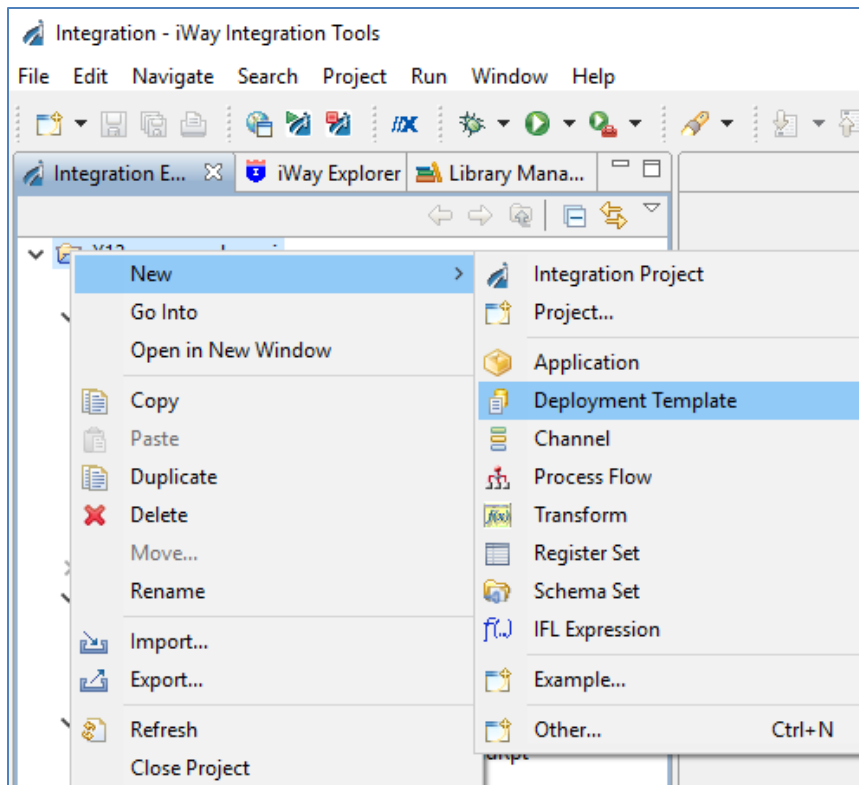
## Creating a Template in iIT

A *template* in iIT refers to the runtime configuration that is configured and associated with an iIA.

The deployment of preconfigured template in iIT is the equivalent of configuring the *Server* and *Tools* sections in the iSM Administration Console for a deployed iIA. Templates may contain generic settings and one template can be deployed for different iIAs.

**Note:** Creating a template using iIT is supported in iIT Version 7.0.6 and higher.

1. Right-click anywhere inside the Integration Explorer tab, select *New* and then click *Deployment Template* from the context menu, as shown in the following image.



The Template Object dialog opens, as shown in the following image.

The screenshot shows a Windows-style dialog box titled "Template Object". Below the title bar is the section "Deployment Template General Properties" with the instruction "Please choose a name and location for this new Deployment Template." The dialog contains several input fields: "Project Folder" with the value "/X12\_usr\_samples\_prj/Templates" and a "Browse..." button; "Name" with the value "X12"; "Description" with an empty text area; "Target Server Version" with a dropdown menu showing "7.0.6" and a link "Install additional Target Server Version"; and a checkbox "Create in current folder" which is currently unchecked. At the bottom are buttons for "?", "Finish", and "Cancel".

Template Object

**Deployment Template General Properties**

Please choose a name and location for this new Deployment Template.

Project Folder: /X12\_usr\_samples\_prj/Templates [Browse...](#)

Name: X12

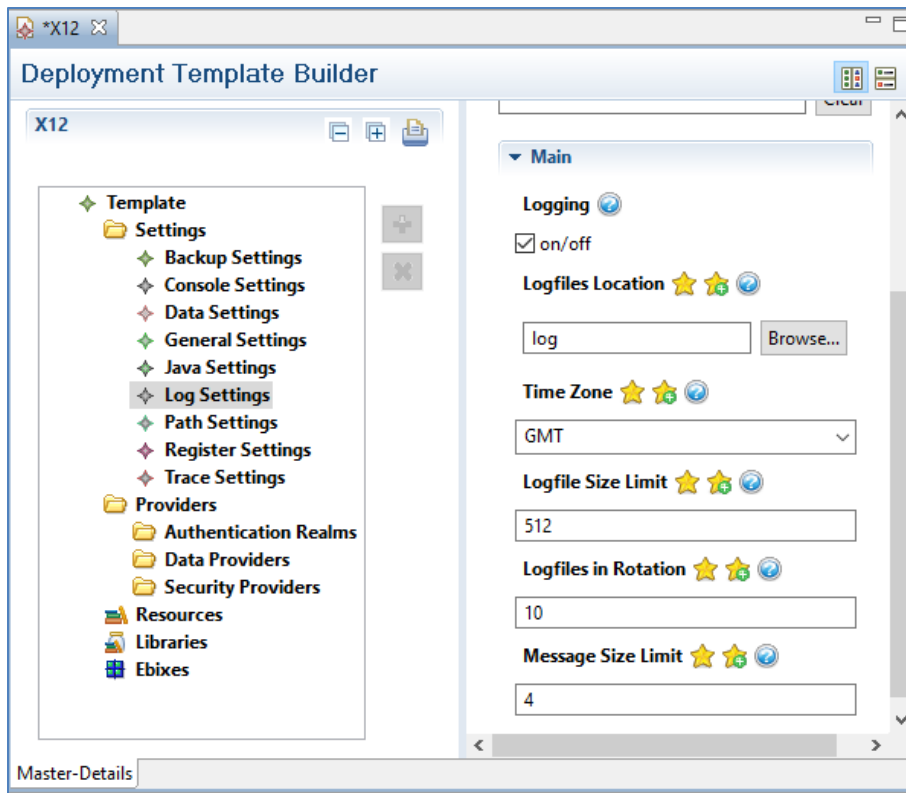
Description: [Empty text area]

Target Server Version: 7.0.6 [Install additional Target Server Version](#)

☐ Create in current folder

? Finish Cancel

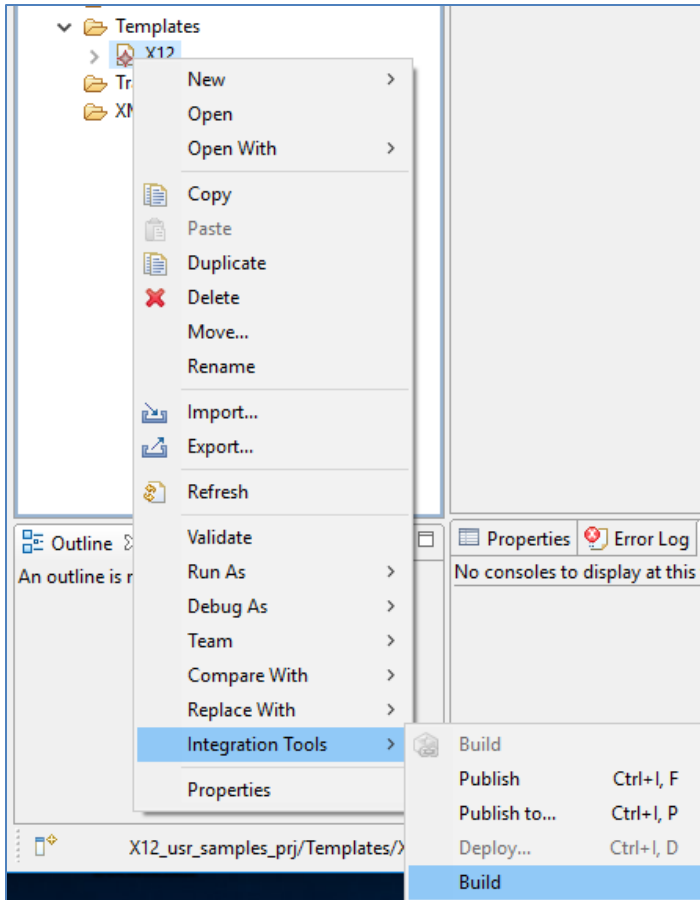
2. Type a name for the new template in the Name field (for example, *X12*) and click *Finish*.
3. To demonstrate how templates can be configured with default values, click *Log Settings* and then click the *on/off* check box, as shown in the following image.



This setting indicates that logging will be enabled for every published iIA that is associated with this template.

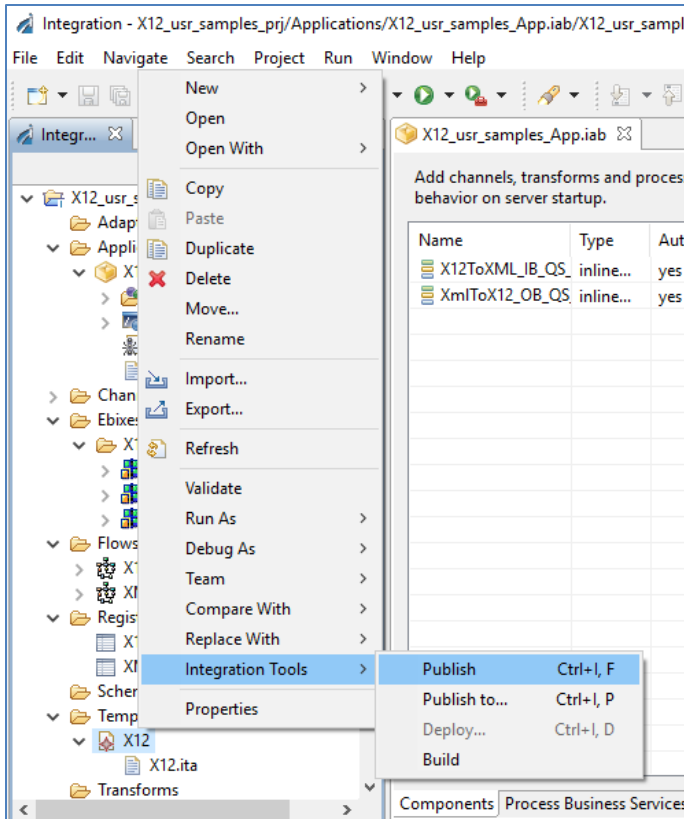
4. Right-click the template in the Integration Explorer tab (for example, X12), select *Integration Tools* from the context menu and then click *Build*, as shown in the following image.





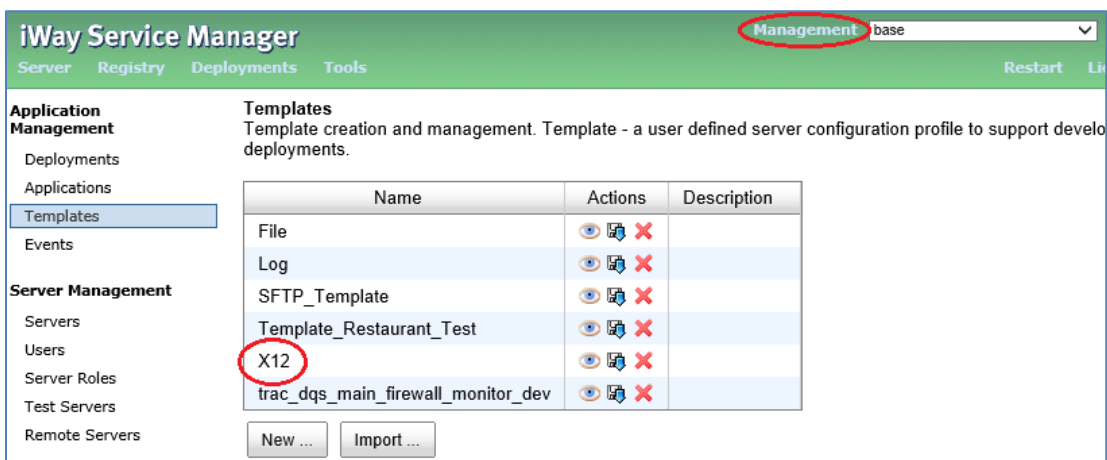
This process builds the template.

5. Right-click the template in the Integration Explorer tab (for example, *X12*), select *Integration Tools* from the context menu and then click *Publish*, as shown in the following image.



This process publishes the template to the runtime server.

- Go to the iSM Administration Console and click *Management*, as shown in the following image.



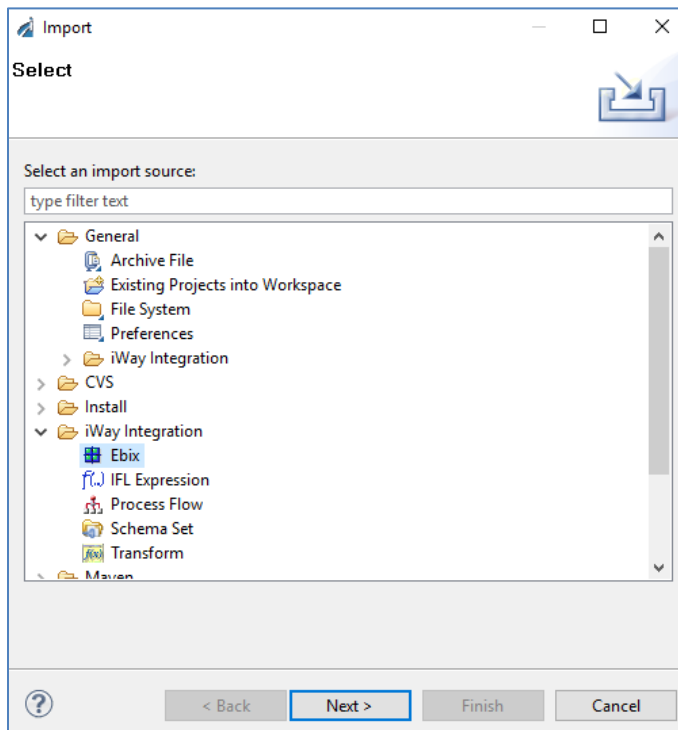
Notice that the new X12 template you built and published using iIT is listed under the Templates section. This template is now available to be associated with a published iIA and ready to be deployed.

## Importing an Ebix

This section describes how to import an Ebix and associate it with a channel.

1. Right-click anywhere inside the Integration Explorer tab and select *Import...* from the context menu.

The Import dialog opens, as shown in the following image.

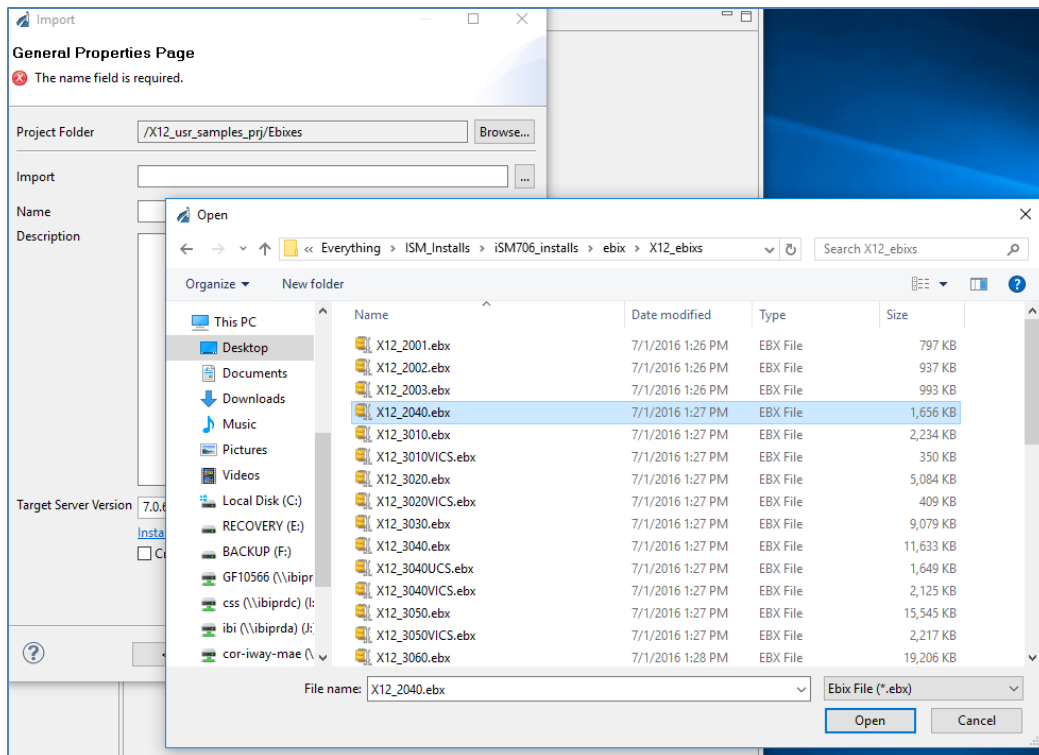


2. Expand the *iWay Integration* folder, select *Ebix*, and then click *Next*.

The General Properties Page dialog opens.

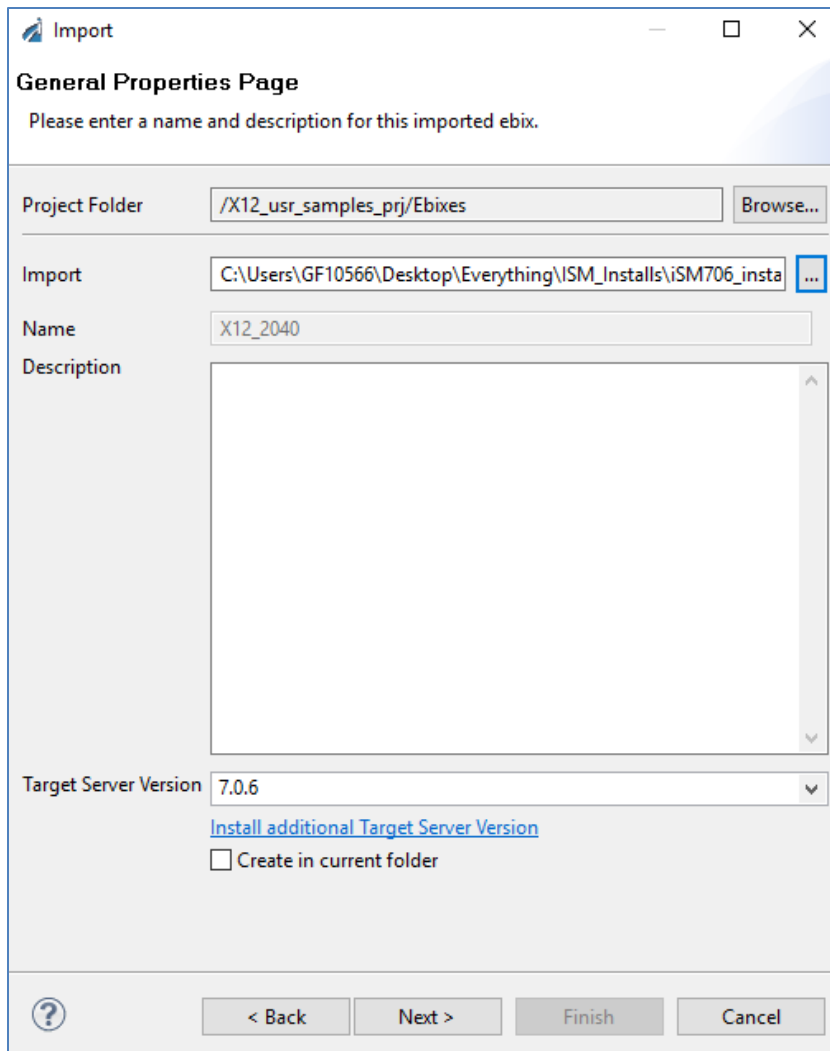
3. Click the ellipsis button (...) to the right of the Import field.

The Open dialog is displayed, as shown in the following image.



4. Select the specific Ebix file (for example, *X12\_2040.ebx*) that you want to import and click *Open*.

You are returned to the General Properties Page dialog, as shown in the following image.



The image shows a Windows-style dialog box titled "Import" with a standard icon. Below the title bar is a section labeled "General Properties Page" with the instruction "Please enter a name and description for this imported ebix." The dialog contains several input fields: "Project Folder" with the text "/X12\_usr\_samples\_prj/Ebixes" and a "Browse..." button; "Import" with a file path "C:\Users\GF10566\Desktop\Everything\ISM\_Installs\iSM706\_insta" and a blue selection icon; "Name" with the text "X12\_2040"; and "Description" with a large empty text area. At the bottom, there is a "Target Server Version" dropdown menu set to "7.0.6", a blue hyperlink "Install additional Target Server Version", and an unchecked checkbox "Create in current folder". The footer contains a help icon, and four buttons: "< Back", "Next >", "Finish", and "Cancel".

Import

**General Properties Page**

Please enter a name and description for this imported ebix.

Project Folder: /X12\_usr\_samples\_prj/Ebixes [Browse...]

Import: C:\Users\GF10566\Desktop\Everything\ISM\_Installs\iSM706\_insta [...]

Name: X12\_2040

Description: [Empty text area]

Target Server Version: 7.0.6 [v]

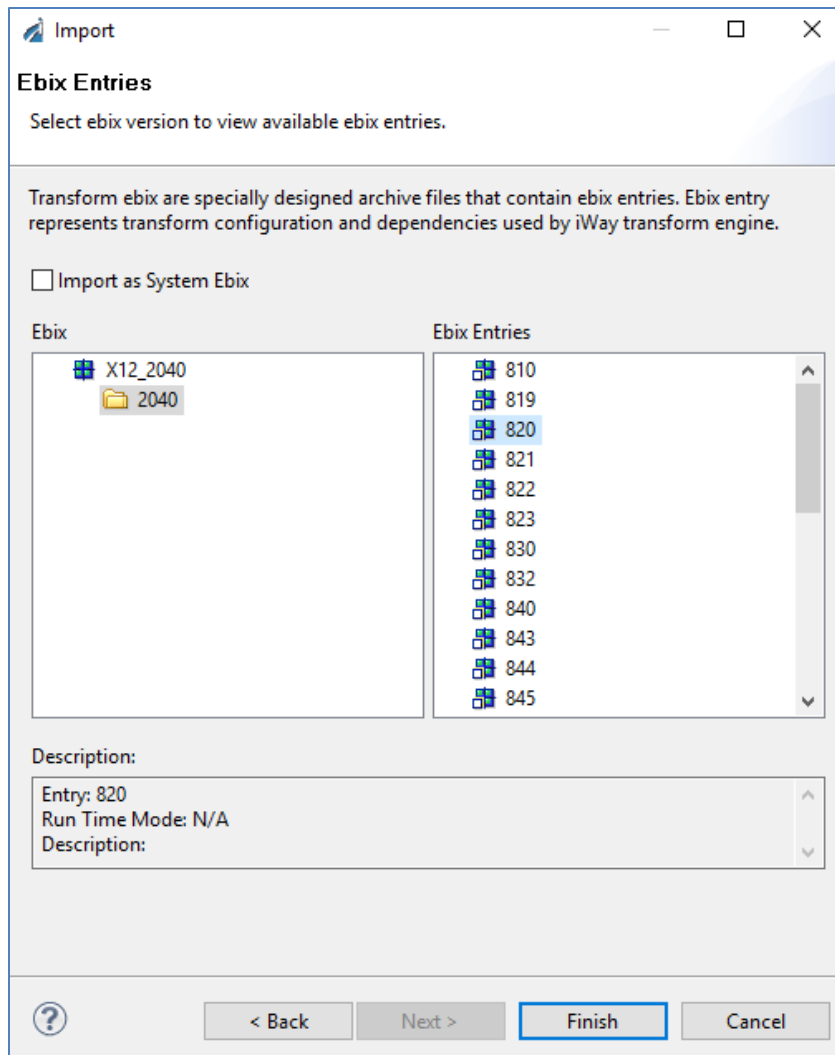
[Install additional Target Server Version](#)

☐ Create in current folder

[?] < Back Next > Finish Cancel

5. Click *Next*.

The Ebix Entries dialog opens, as shown in the following image.



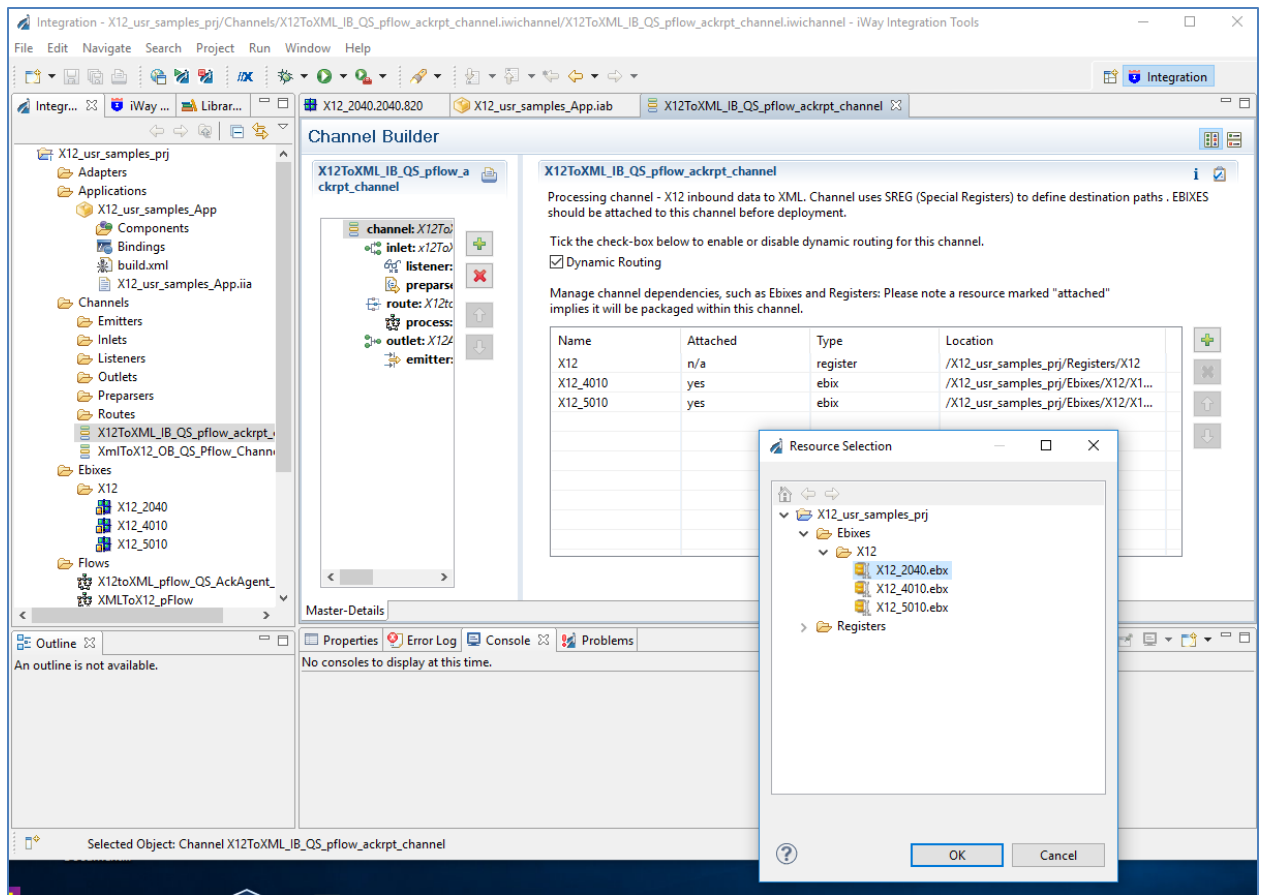
6. Select the X12 message type to be imported or select the *Import as System Ebix* check box to load all of the message types available in the X12 version you are working with (for example, 2040).

7. Click *Finish*.

Your Ebix must now be associated to a channel in order to validate inbound and outbound documents during runtime based on pre-built X12 data dictionaries.

8. In the Integration Explorer tab, expand the *Channels* folder and double-click on a channel (for example, *X12ToXML\_IB\_QS\_pflow\_ackrpt\_channel*).

Channel Builder opens, as shown in the following image.

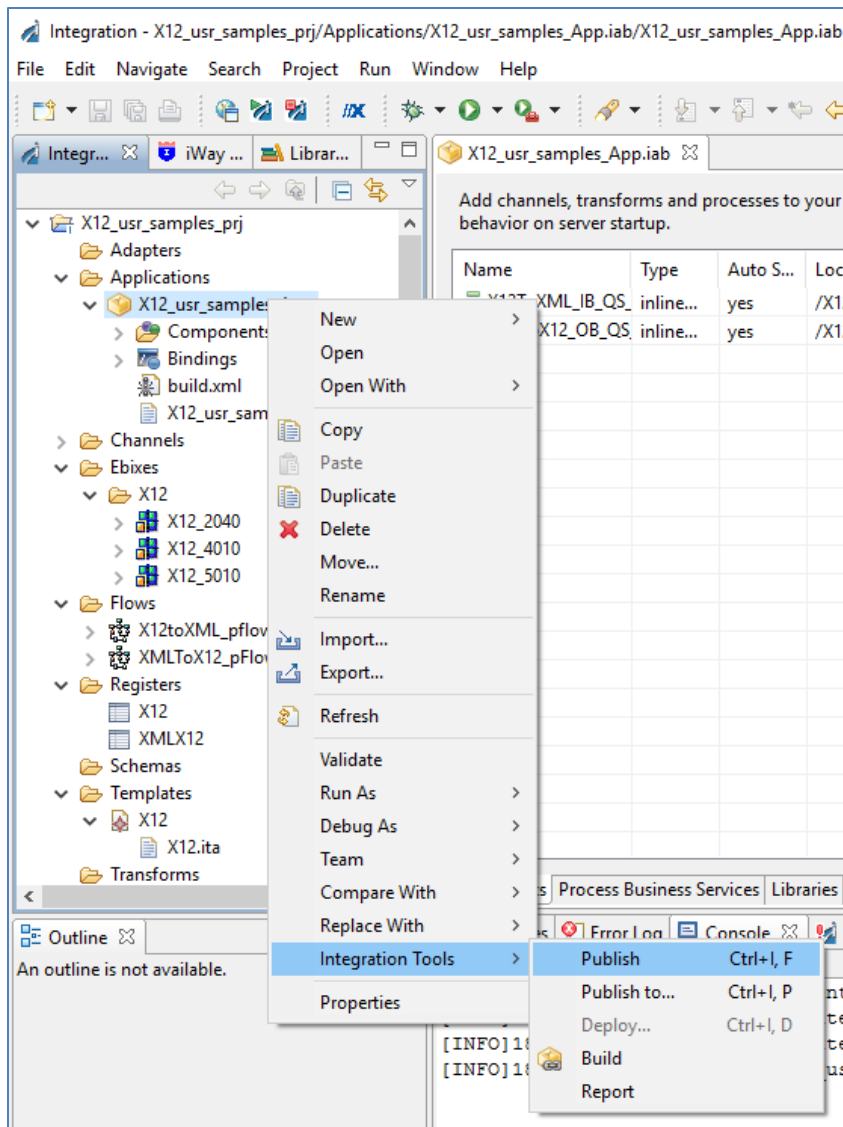


- Click on the selected channel that has now opened in Channel Builder and associate the Ebix that you imported.

## Publishing the iIA

This section describes how to publish the iIA to the iSM design time registry using iIT.

- Right-click the iIA that you want to publish (for example, *X12\_usr\_samples\_App*), select *Integration Tools* from the context menu, and then click *Publish*, as shown in the following image.



2. Go to the iSM Administration Console and click *Management*, as shown in the following image.



**iWay Service Manager**

Server Registry Deployments Tools

**Application Management**

Upload/Download/Delete applications. iWay Integration Application (IIA) is an integration solution with dedicated applications that can be deployed, started, stopped and deleted without affecting other IIAs.

Deployments

**Applications**

Templates

Events

**Server Management**

Servers

Users

Server Roles

Test Servers

Remote Servers

Application	Actions	Owner	Version
Cheesecake_file1		GF10566@CSSGIDON3	08/17/16 18:34:39
dqs_emitter_test_app		adriver@PNJ-F7DJNX1	09/26/16 10:17:33
File1		GF10566@CSSGIDON3	08/05/16 15:24:52
Schedule_Plan		GF10566@CSSGIDON3	08/16/16 15:25:48
SFTP_Server_Application		WIN78GB\$@win78gb	05/27/16 08:26:01
SWIFT_usr_samples_App		GF10566@CSSGIDON3	09/15/16 11:23:38
TRAC_160907095		GF10566@CSSGIDON3	09/30/16 14:51:02
Umpqua		GF10566@CSSGIDON3	09/15/16 15:29:37
<b>X12_usr_samples_App</b>		GF10566@CSSGIDON3	10/27/16 18:21:17

New ... Import ...

Notice that the iIA you published using iIT (for example, *X12\_usr\_samples\_App*) is listed under the Applications section. The template that you created earlier (for example, *X12*) is now available to be associated with this published iIA, which can then be deployed.

### Deploying the Published iIA from the iSM Administration Console

This section describes how to deploy the published iIA from the iSM Administration Console.

1. Go to the iSM Administration Console and click *Management*.
2. In the Applications section, click the *Deploy* icon in the Actions column that corresponds to the published iIA (for example, *X12\_usr\_samples\_App*), as shown in the following image.

**iWay Service Manager** Management base

Server Registry Deployments Tools Restart Lic

**Application Management**

Deployments

**Applications**

Templates

Events

**Server Management**

Servers

Users

Server Roles

Test Servers

Remote Servers

**Applications**

Upload/Download/Delete applications. iWay Integration Application (IIA) is an integration solution with dedicated applications that can be deployed, started, stopped and deleted without affecting other IIAs.

Application	Actions	Owner	Version
Cheesecake_file1		GF10566@CSSGIDON3	08/17/16 18:34:39
dqs_emitter_test_app		adriver@PNJ-F7DJNX1	09/26/16 10:17:33
File1		GF10566@CSSGIDON3	08/05/16 15:24:52
Schedule_Plan		GF10566@CSSGIDON3	08/16/16 15:25:48
SFTP_Server_Application		WIN78GB\$@win78gb	05/27/16 08:26:01
SWIFT_usr_samples_App		GF10566@CSSGIDON3	09/15/16 11:23:38
TRAC_160907095		GF10566@CSSGIDON3	09/30/16 14:51:02
Umpqua		GF10566@CSSGIDON3	09/15/16 15:29:37
X12_usr_samples_App		GF10566@CSSGIDON3	10/27/16 18:21:17

New ... Import ...

The Deployments – New Deployment pane opens, as shown in the following image.

**iWay Service Manager** Management base

Server Registry **Deployments** Tools Restart Lic

**Application Management**

Deployments

Applications

Templates

Events

**Server Management**

Servers

Users

Server Roles

Test Servers

Remote Servers

**Deployments - New Deployment**

Deploy an application

**Deploy application X12\_usr\_samples\_App (10/27/16 18:21:17)**

Deployment Name Use an auto-generated name below or provide a custom name.

☒ X12\_usr\_samples\_App\_X12

☐

Deploy As Test Server Selecting this option makes the deployment available as a server where you may test it.

☐

Configuration Template A 'raw' template is used by default.

Template\_Restaurant\_Test

**X12**

trac\_dqs\_main\_firewall\_monitor\_dev

Port Port the console will listen on

10005

Application Description An automatic description is generated by default.

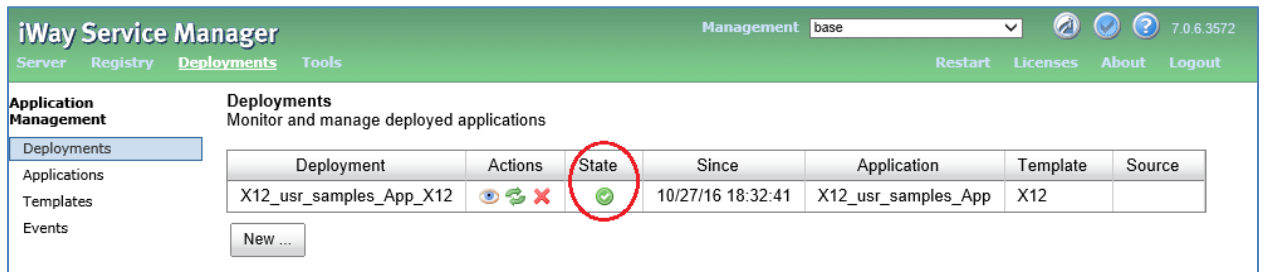
<< Back **Deploy** Reset

3. Select the template you created earlier (for example, X12) to be associated with this IIA and click *Deploy*.

The iIA is now deployed and is in a stopped state by default.

4. Click the red icon in the State column.

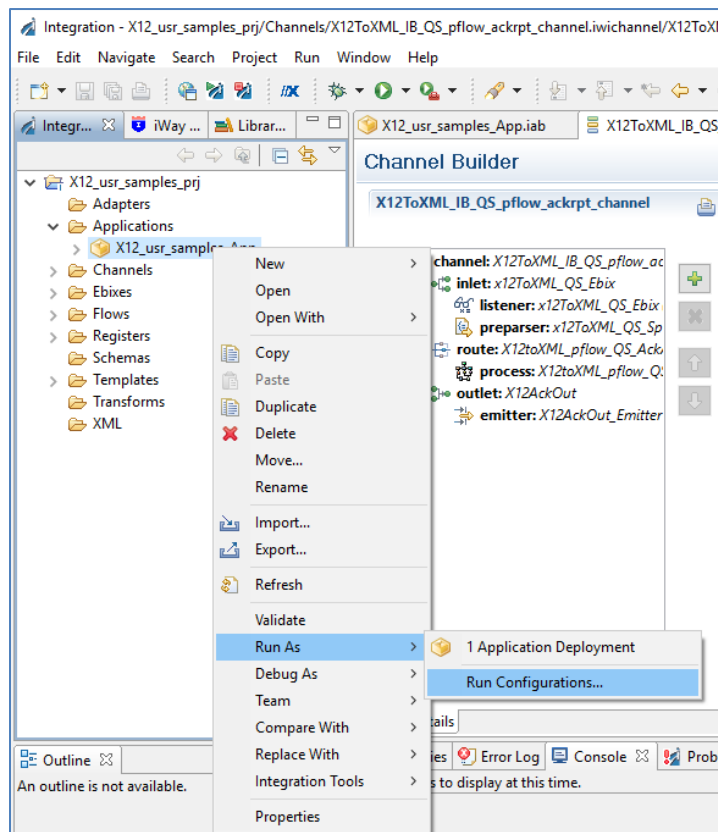
Once the iIA has started, the red icon changes to a green check mark icon in the State column, as shown in the following image.



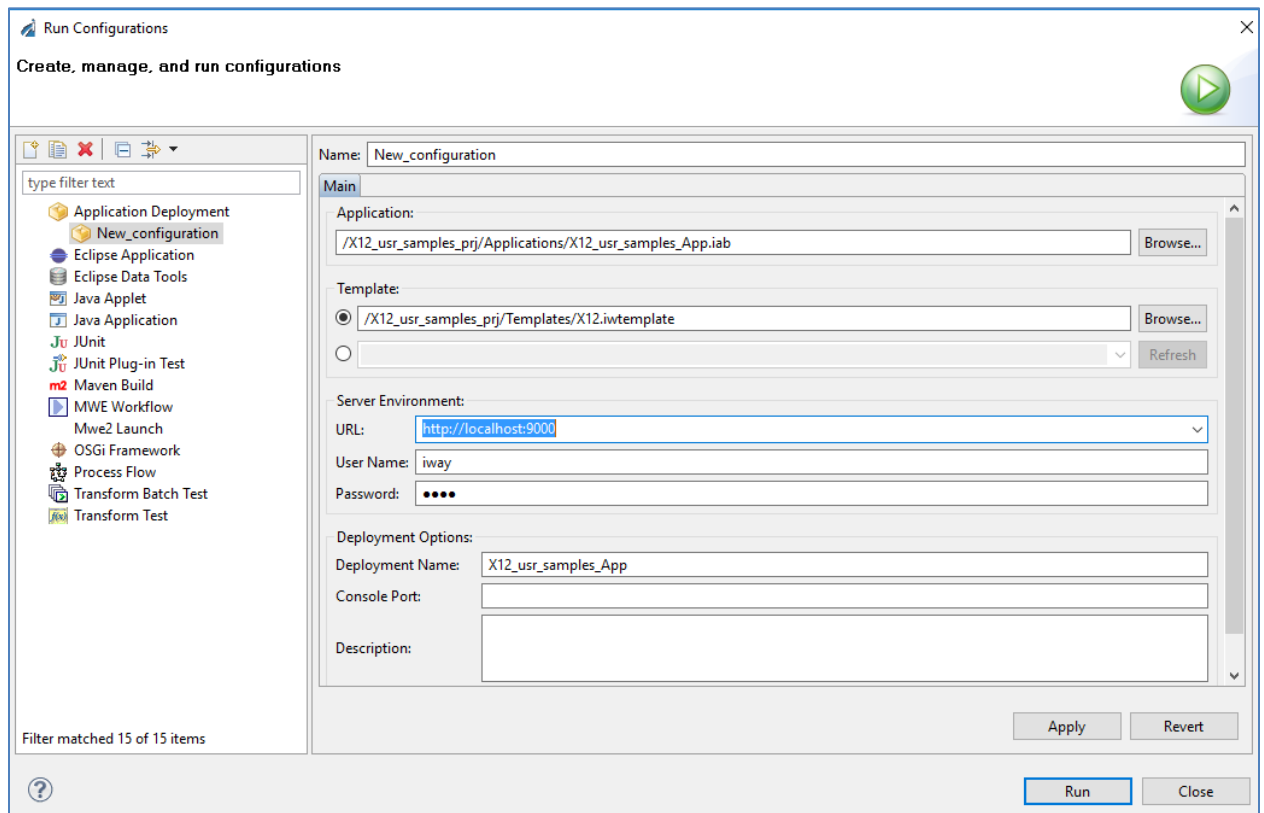
### ***Deploying a Published iIA From iIT***

It is also possible to deploy an iIA with an associated template directly from iIT.

1. In iIT, right click on the iIA (for example, *X12\_usr\_samples\_App*), select *Run As* from the context menu, and then click *Run Configurations...*, as shown in the following image.



The Run Configurations dialog opens, as shown in the following image.



2. Select the template to be associated and the target server for deployment.
3. Click *Apply* and then *Run*.

**Note:** You can also use the iWay Software Development Kit (SDK) to configure an ANT script to deploy an iIA. For more information, see the [iWay Software Development Kit User's Guide](#).

## Tips and Usage Considerations

This section provides several useful tips and usage considerations when using iIAs.

### Template Preserve Settings

It is possible to configure the iSM server settings in the iIA and in the template to include (for example, Data Providers). The advantage of the template is that, after being associated with an iIA, it preserves the settings after being deployed and redeployed. However, if a Data Provider is configured in the iIA and the same iIA is redeployed, then those settings will be lost.

### Changing the Console Port of an iIA

The password for the iWay user must be identical in the following areas:

1. From the iSM Administration Console:

- a. Go to *base*.
- b. Click on *Server* and then *Console Settings*.

2. From the iSM Administration Console:

- a. Go to *base*.
- b. Click on *Management, Users*, and then *iWay*.

3. From the iIA:

- a. Go to *Template*.
- b. Click on *Server* and then *Console Settings*.