

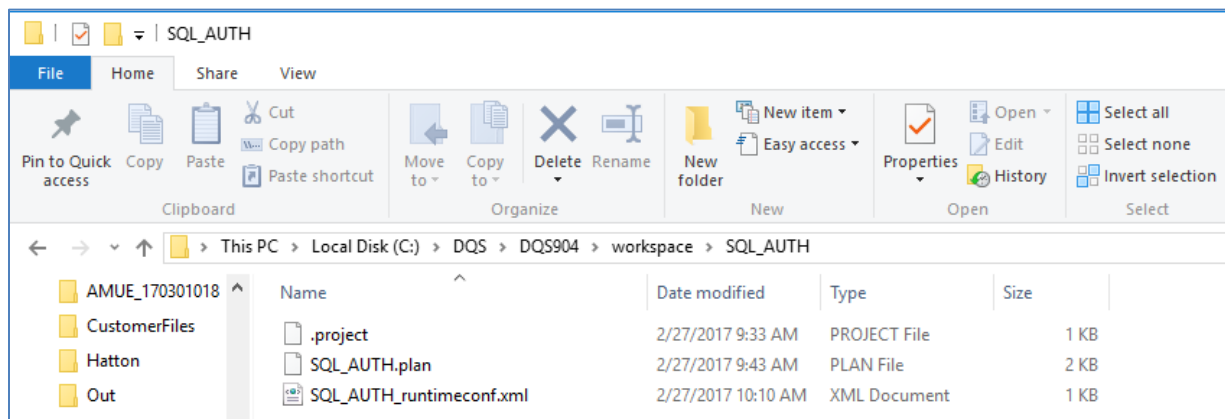


Migrating iWay Data Quality Server Plans and Components on Windows

This use case describes how to migrate iWay Data Quality Server (DQS) plans and associated components from development (for example, a DQS GUI workspace on Windows) to a runtime server (for example, DEV/TEST/PROD) on another Windows host.

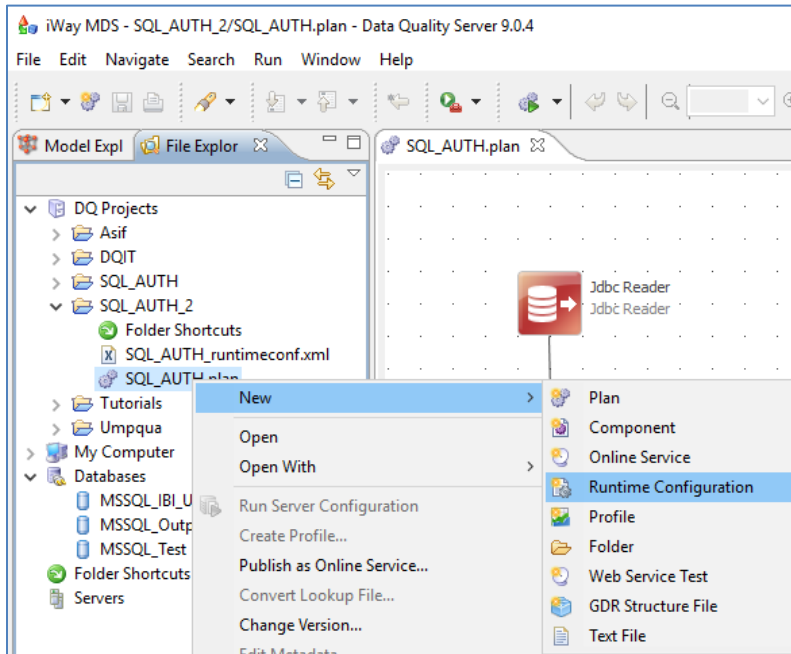
General Overview and Initial Setup

This use case references a DQS plan called *SQL_AUTH.plan*, which invokes a SQL database call and writes the output to disk. The DQS directory for design time is called *workspace* and contains the DQS plan, as shown in the following image.



In addition, the *workspace* directory contains a runtime configuration file for the DQS plan (*SQL_AUTH_runtimeconf.xml*).

To generate this runtime configuration file at any time, right-click the *SQL_AUTH.plan* file in the File Explorer, select *New* from the context menu, and then click *Runtime Configuration*, as shown in the following image.



This file defines data sources, folder shortcuts, runtime components, initial parallelism level, and logging, as shown in the following image.

```
<?xml version='1.0' encoding='UTF-8'?>
<runtimeconfig>
  <contributedConfigs/>
  <dataSources>
    <dataSource driverclass="com.microsoft.sqlserver.jdbc.SQLServerDriver" name="MSSQL_Output" user="" password="crypted:DESede:E3Vj8wicXQw2H0/ksRmDGTzuSFwboYG" url="jdbc:sqlserver://CSSGIDON3:1433:databaseName=Test_Output;integratedSecurity=true"/>
    <dataSource driverclass="com.microsoft.sqlserver.jdbc.SQLServerDriver" name="MSSQL_Test" user="sa" password="crypted:DESede:e/uJUuK8sVsPlg1A8pg8K33vwjE7eFGB8rQosgoCT2M=" url="jdbc:sqlserver://CSSGIDON3:1433:databaseName=Test;integratedSecurity=false"/>
    <dataSource driverclass="com.microsoft.sqlserver.jdbc.SQLServerDriver" name="MSSQL_IBI_User" user="sa" password="crypted:DESede:vK5gJYwvzfabzVn3eL6QnDOTA3nsB8rQosgoCT2M=" url="jdbc:sqlserver://ATS2012_IBI.COM:1433:databaseName=IBI_User"/>
  </dataSources>
  <pathVariables/>
  <parallelismLevel>1</parallelismLevel>
</runtimeconfig>
```

Note: The highlighted value *MSSQL_IBI_User* is the data source that is referenced in this use case.

Configuring the Runtime Environment

1. Log on to the Information Builders Technical Support Center (<http://techsupport.ibi.com>).
2. From the Software Downloads/Shipments page, expand *iWay7 Data Quality Suite* and click *Download*, as shown in the following image.

iWay7 Data Quality Suite			
iWay Data Profiler (iDP) Version 8.0.3 Patch Release Announcement.			
Request your permanent license for iWay Data Quality Server (DQS).			
706			
iWay Integrity Management Central	706 134	Prod	Download
iWay Data Profiler	706 901	Prod	Download
iWay Data Quality Server	706 904	Prod	Download

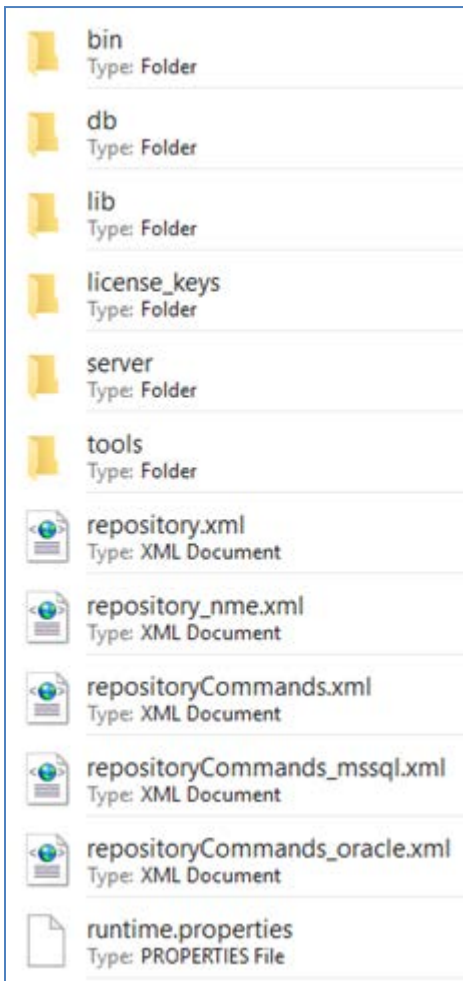
- Download the *iWay-dqs-9.0.4.ga-2015-08-28-runtime.zip* file, as shown in the following image.

File Name	File Size (bytes)	Download
<i>iWay-dqs-9.0.4.ga-2015-08-28-linux.tgz</i>	455,094,542	FTP HTTP
<i>iWay-dqs-9.0.4.ga-2015-08-28-runtime.zip</i>	53,292,750	FTP HTTP
<i>iWay-dqs-9.0.4.ga-2015-08-28-win32.zip</i>	472,999,143	FTP HTTP

Note: Ensure that the version number matches the DQS version that is being used in the design time environment.

- Extract the *iWay-dqs-9.0.4.ga-2015-08-28-runtime.zip* file to a location on your file system.

A folder structure is created, as shown in the following image.



Note: This runtime folder structure is identical to the *\runtime* folder in your DQS design time root directory.

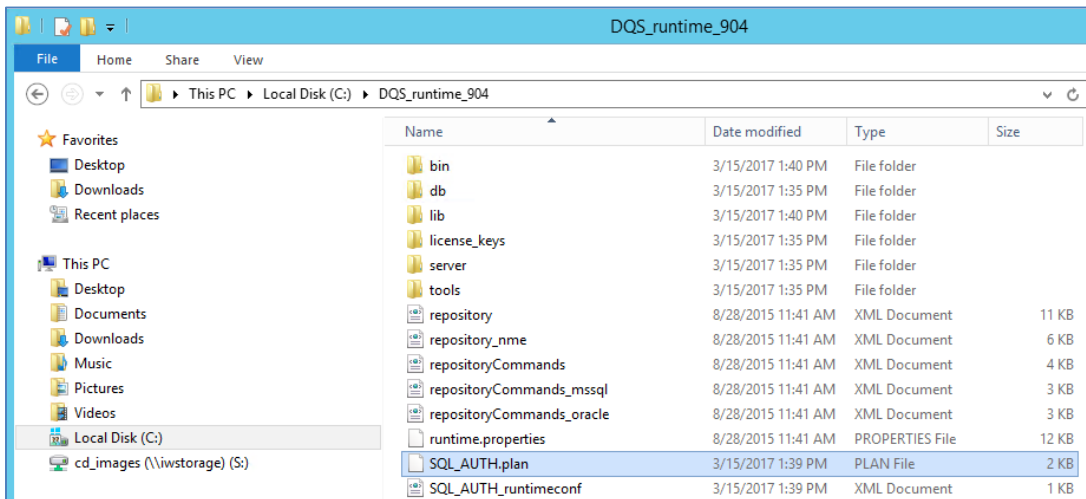
The following table lists and describes the key files or folders that you need to be aware of.

File / Folder	Description
runtime.properties	Properties file containing the performance options.
\bin	Contains the .dll files that are required for MS SQL authentication. The <i>runcif.bat</i> file that is located in this folder is required for DQS command line (batch) mode.
\license_keys	Contains the DQS license file.
\server\etc	Contains the configuration files that are required to run a DQS plan as an online service.

Migrating the iWay DQS Plan and Associated Components

1. Move the following files from the design time environment to the runtime environment:
 - o *sqljdbc_auth.dll* file into the `\bin` folder
 - o *sqljdbc4.jar* file into the `\lib` folder
 - o *SQL_AUTH.plan* file and the *SQL_AUTH.runtimeconf.xml* file into the `\iWay_DQS_runtime_904` folder

Note: The entire `\runtime` folder under your DQS design time directory structure can be copied to the runtime server.



2. Update the *runcif.bat* file.

The *runcif.bat* file, which is located in the `\bin` folder, allows you to test a DQS plan using a command line. This file contains the *JAVA_OPTS* parameter, which enables you to modify your Java runtime settings. For example, if integrated authentication is required when logging on to an MS SQL database, then set the *JAVA_OPTS* parameter as follows:

```
set JAVA_OPTS=-Djava.library.path=C:\DQS_runtime_904\bin
```

This setting includes the *sqljdbc_auth.dll* file that is required.

The JDBC connection string in the *SQL_AUTH_runtimeconf.xml* file must be updated as follows:

```
jdbc:sqlserver://hostname:port;databaseName=dbname;integratedSecurity=true
```

In this use case, *dbname* would be set to *MSSQL_IBI_User*.

Testing Your Migrated iWay DQS Plan

1. Test your DQS plan in the command line mode of the DQS runtime environment.
2. From a Windows PowerShell command prompt, in the \bin directory, execute the following command:

```
./runcif -runtimeConfig ../SQL_AUTH_runtimeconf.xml ../SQL_AUTH.plan
```

For example:

```
PS C:\DQS_runtime_904\bin> ./runcif -runtimeConfig ../SQL_AUTH_runtimeconf.xml ../SQL_AUTH.plan
Using java at: "C:\Windows\System32\java.exe"
Using DQC at: "C:\DQS_runtime_904"
16.03.2017 14:50:37 [INFO] Using following licenses:
16.03.2017 14:50:37 [INFO] C:\DQS_runtime_904\license_keys\license_iway_9_limited_2017-04-20.plf
16.03.2017 14:50:37 [INFO] =====
16.03.2017 14:50:37 [INFO] This is a trial license key only. It's valid only till 2017-04-20.
16.03.2017 14:50:37 [INFO] =====
16.03.2017 14:50:37 [INFO] Using DQS configuration file C:\DQS_runtime_904\bin\..\SQL_AUTH.plan
16.03.2017 14:50:37 [INFO] Using runtime configuration file C:\DQS_runtime_904\SQL_AUTH_runtimeconf.xml
16.03.2017 14:50:38 [INFO] DQS engine initialized.
16.03.2017 14:50:38 [INFO] Creating runtime...
16.03.2017 14:50:39 [INFO] Starting runtime...
16.03.2017 14:50:39 [INFO] Running runtime...
16.03.2017 14:50:40 [INFO] Stopping runtime...
16.03.2017 14:50:40 [INFO] Finished!
16.03.2017 14:50:40 [INFO] Task completed successfully. Elapsed time: 00:00:01
PS C:\DQS_runtime_904\bin>
```