



## Connecting to a Server Using Secure File Transfer Protocol (SFTP)

When you connect to a server using Secure File Transfer Protocol (SFTP), SSH encryption is used to protect the connection between your client machine and the server. This protects your password and your data, preventing an eavesdropper from capturing or stealing them as they travel over the network.

Despite the similarity in name and operation, SFTP is a completely different protocol from FTP and does not support all the same features and commands as FTP. Also, while they are both secure file transfer protocols and have similar names, FTPS (FTP with TLS/SSL) should not be confused with SFTP.

To use SFTP for secure connections, the server you are connecting to must also support SFTP. If you try to connect with SFTP to a server that does not support it, you will receive an error. Your network administrator or service provider can tell you if your server supports SFTP, and what other information you might need to use SFTP.

Before continuing, ensure that you download the *SFTP\_demo.zip* file, which contains:

- *SFTP\_Server\_Application.ii*
- *SFTP\_Template.ita*
- *SFTPROOT.zip*
- *FTPSecurity.xml*
- *keys.zip*
- *rsa\_privkey.ppk*

---

## Importing the SFTP Template (.ita) and SFTP Application (.ii) Files

1. Extract the *SFTP\_demo.zip* file to a temporary directory on your file system. For example:

`C:\SFTP_demo`

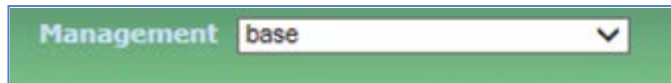
2. Extract the *keys.zip* file to the `<iway_home>\etc\manager` directory. For example:

`C:\iway7\etc\manager`

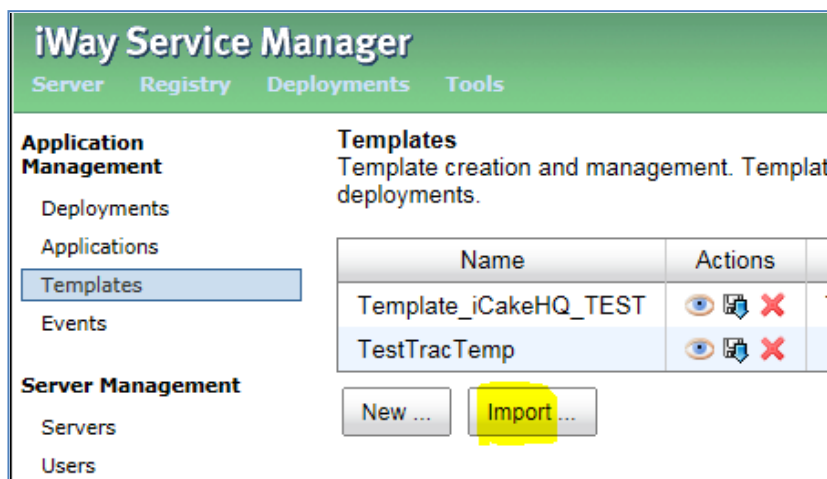
3. Access the iWay Service Manager (iSM) Administration Console using the following URL:

<http://hostname:9999>

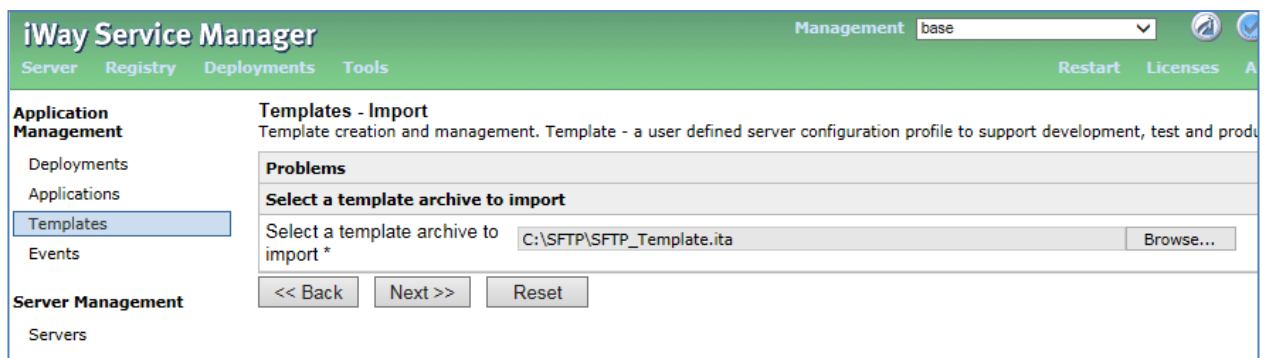
4. Click *Management* located in the top pane, as shown in the following image.



5. Click *Templates* located under Application Management in the left pane and then click *Import*, as shown in the following image.

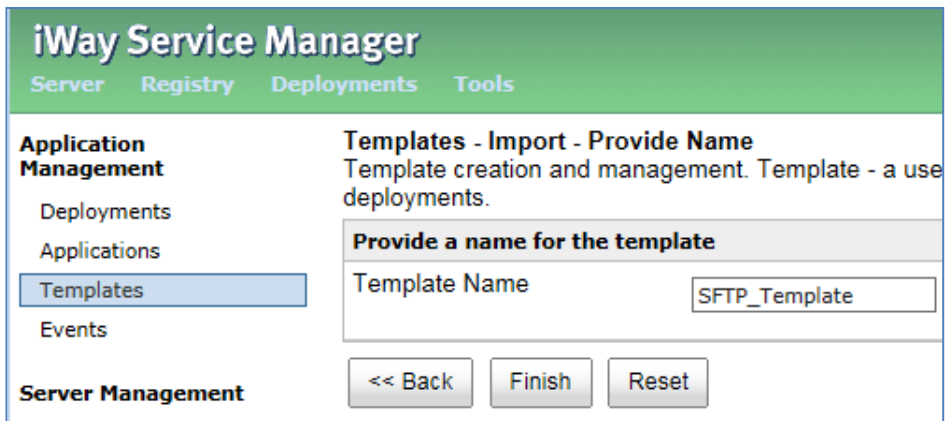


The Templates - Import page opens, as shown in the following image.



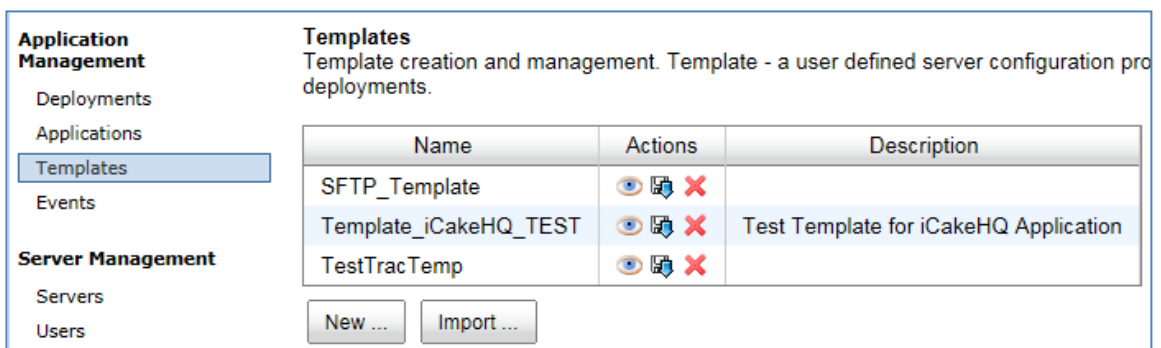
6. Enter the path to the *SFTP\_Template.ita* template file that you extracted from the *SFTP\_demo.zip* file and then click *Next*.

The Templates – Import – Provide Name page opens, as shown in the following image.

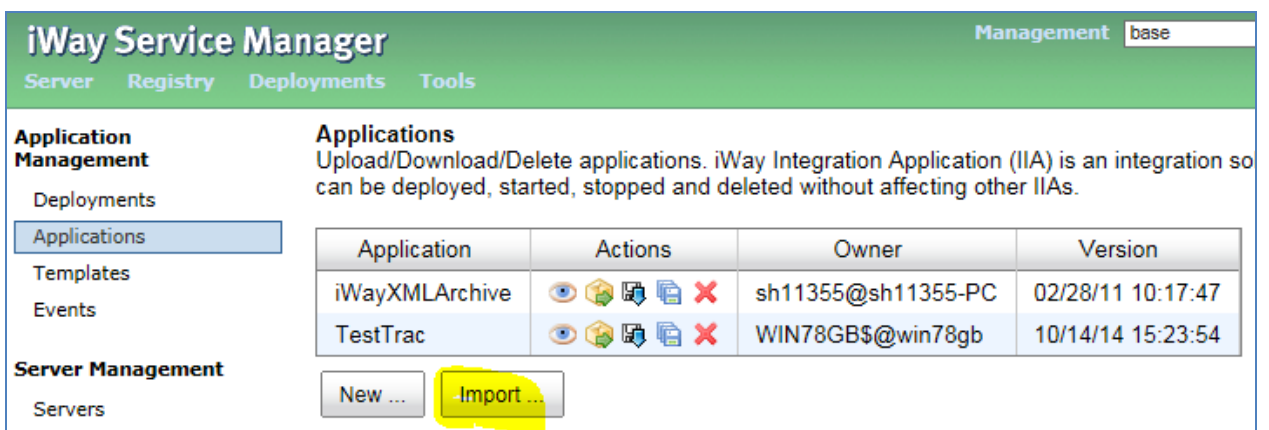


7. Enter a name for the template (for example, SFTP\_Template) and then click *Finish*.

The template you imported (SFTP\_Template) is now displayed in the list of available templates, as shown in the following image.



8. Click *Applications* located under Application Management in the left pane and then click *Import*, as shown in the following image.



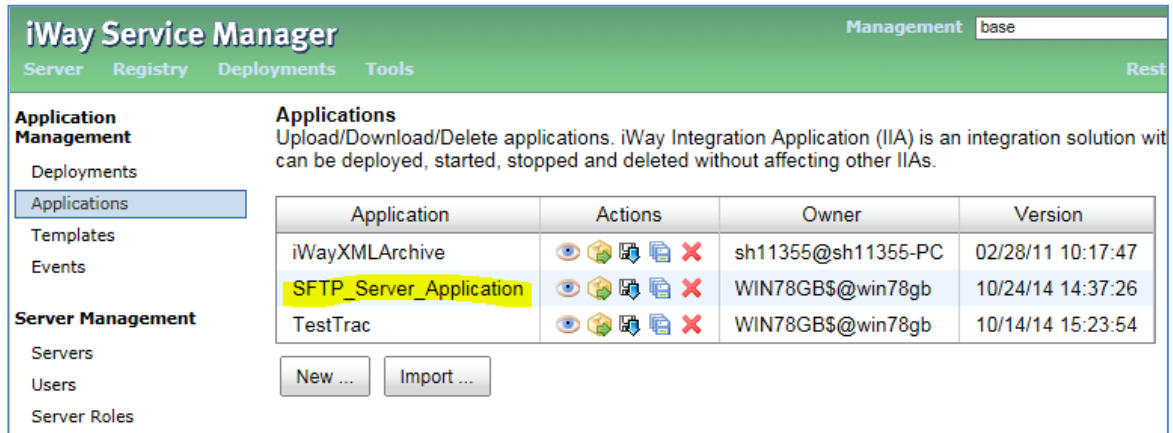
The Applications - Import page opens.

9. Enter the path to the *SFTP\_Server\_Application.ii* iWay Integration Application (IIA) file that you extracted from the *SFTP\_demo.zip* file and then click *Next*.


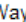
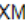
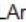




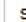
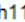
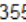
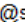
The Applications – Import – Provide Name page opens.

10. Enter a name for the application (for example, *SFTP\_Server\_Application*) and then click *Finish*.

The application you imported (*SFTP\_Server\_Application*) is now displayed in the list of available applications, as shown in the following image.



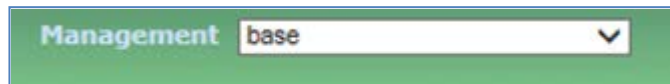
The screenshot shows the iWay Service Manager interface. The top navigation bar includes 'Server', 'Registry', 'Deployments', and 'Tools'. The 'Management' dropdown menu is set to 'base'. The left sidebar shows 'Application Management' with sub-items: 'Deployments', 'Applications' (selected), 'Templates', and 'Events'. Below that are 'Server Management' sub-items: 'Servers', 'Users', and 'Server Roles'. The main content area is titled 'Applications' and contains the text: 'Upload/Download/Delete applications. iWay Integration Application (IIA) is an integration solution with can be deployed, started, stopped and deleted without affecting other IIAs.' Below this text is a table with the following data:

Application	Actions	Owner	Version
iWayXMLArchive	   	sh11355@sh11355-PC	02/28/11 10:17:47
<b>SFTP_Server_Application</b>	   	WIN78GB\$@win78gb	10/24/14 14:37:26
TestTrac	   	WIN78GB\$@win78gb	10/14/14 15:23:54

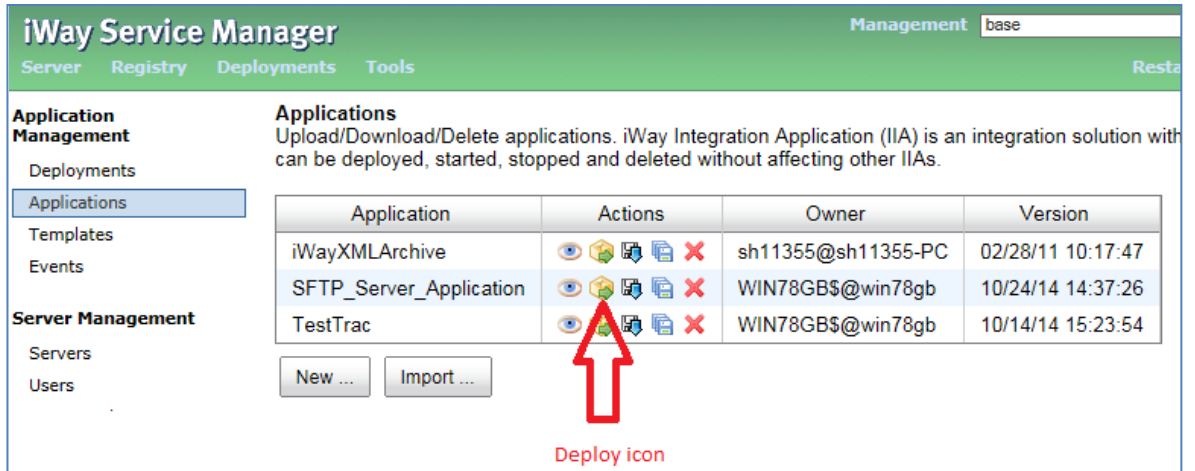
Below the table are two buttons: 'New ...' and 'Import ...'.

### Deploying the Imported SFTP Application

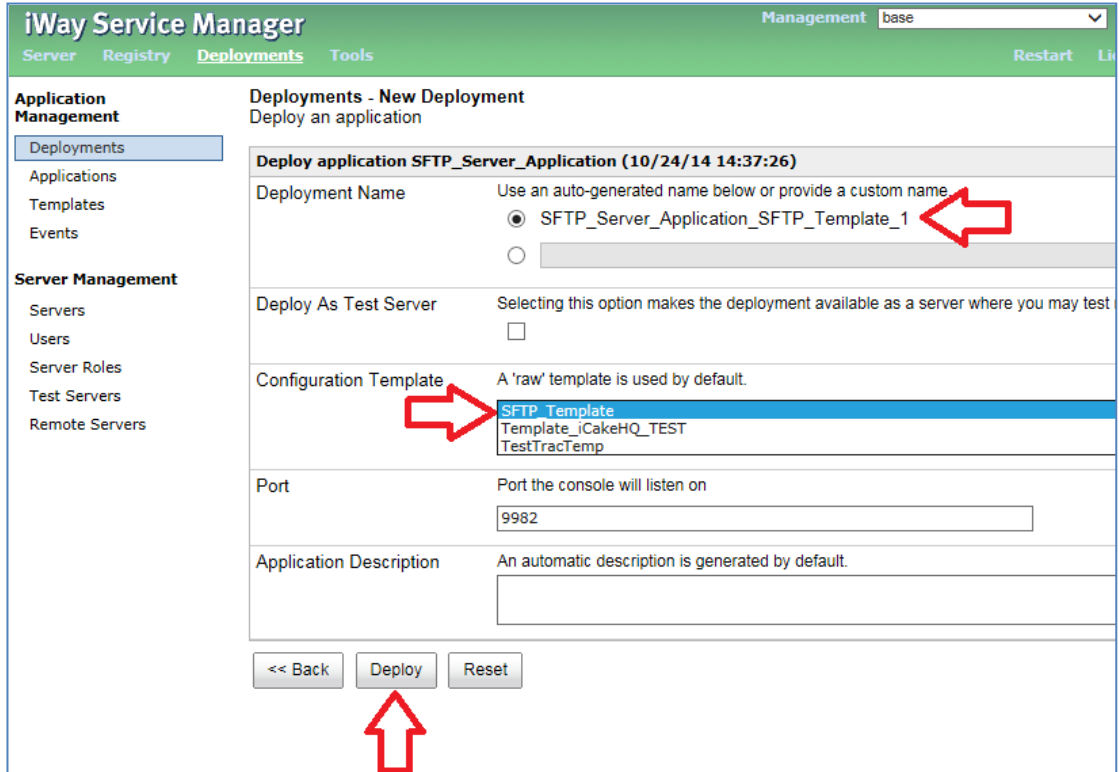
1. From the iWay Service Manager (iSM) Administration Console, click *Management* located in the top pane, as shown in the following image.



2. Click *Applications* located under Application Management in the left pane and then click the *Deploy* icon to the right of the application you imported (*SFTP\_Server\_Application*), as shown in the following image.



The Deployments – New Deployment page opens, as shown in the following image.

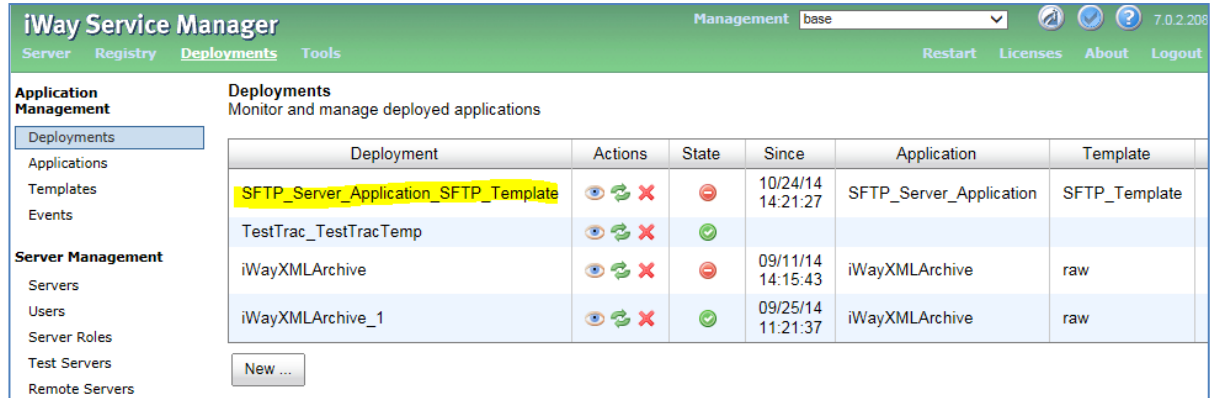


3. For the Configuration Template parameter, double-click the imported SFTP template (*SFTP\_Template*).

Notice that the name specified by the Deployment Name parameter automatically changes to *SFTP\_Server\_Application\_SFTP\_Template\_1*.

4. Click *Deploy*.

The Deployments page opens and displays the deployed SFTP application (*SFTP\_Server\_Application\_SFTP\_Template\_1*) in the list of available deployments, as shown in the following image.



- Copy the *FTPSecurity.xml* file that you extracted from the *SFTP\_demo.zip* file to the *<iway\_home>* directory. For example:

`C:\iway7`

- Copy the *SFTPROOT.zip* file that you extracted from the *SFTP\_demo.zip* file to the *<iway\_home>* directory.

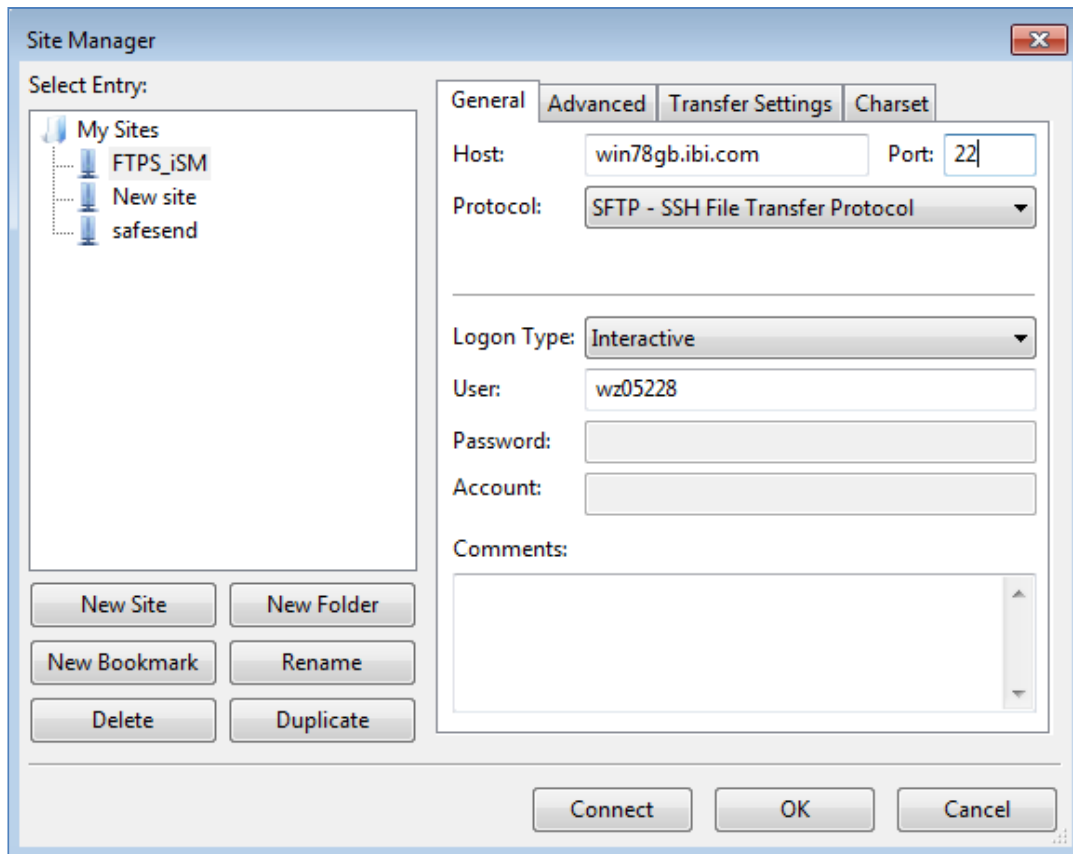
- Extract the *SFTPROOT.zip* file in this directory. For example:

`C:\iway7\SFTPROOT`

- Start the deployed SFTP application (*SFTP\_Server\_Application\_SFTP\_Template\_1*) either as a service or from the iSM Administration Console.
- Use *rsa\_privkey.ppk* file that you extracted from the *SFTP\_demo.zip* file as the Private key for the SFTP client you want to use.

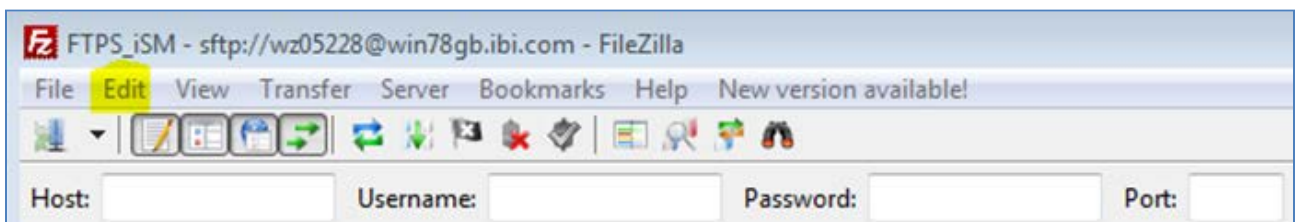
### Testing the Deployed SFTP Application

The following image shows the Site Manager dialog in FileZilla (an FTP client) that is configured to communicate to iWay Service Manager (iSM) using SFTP.

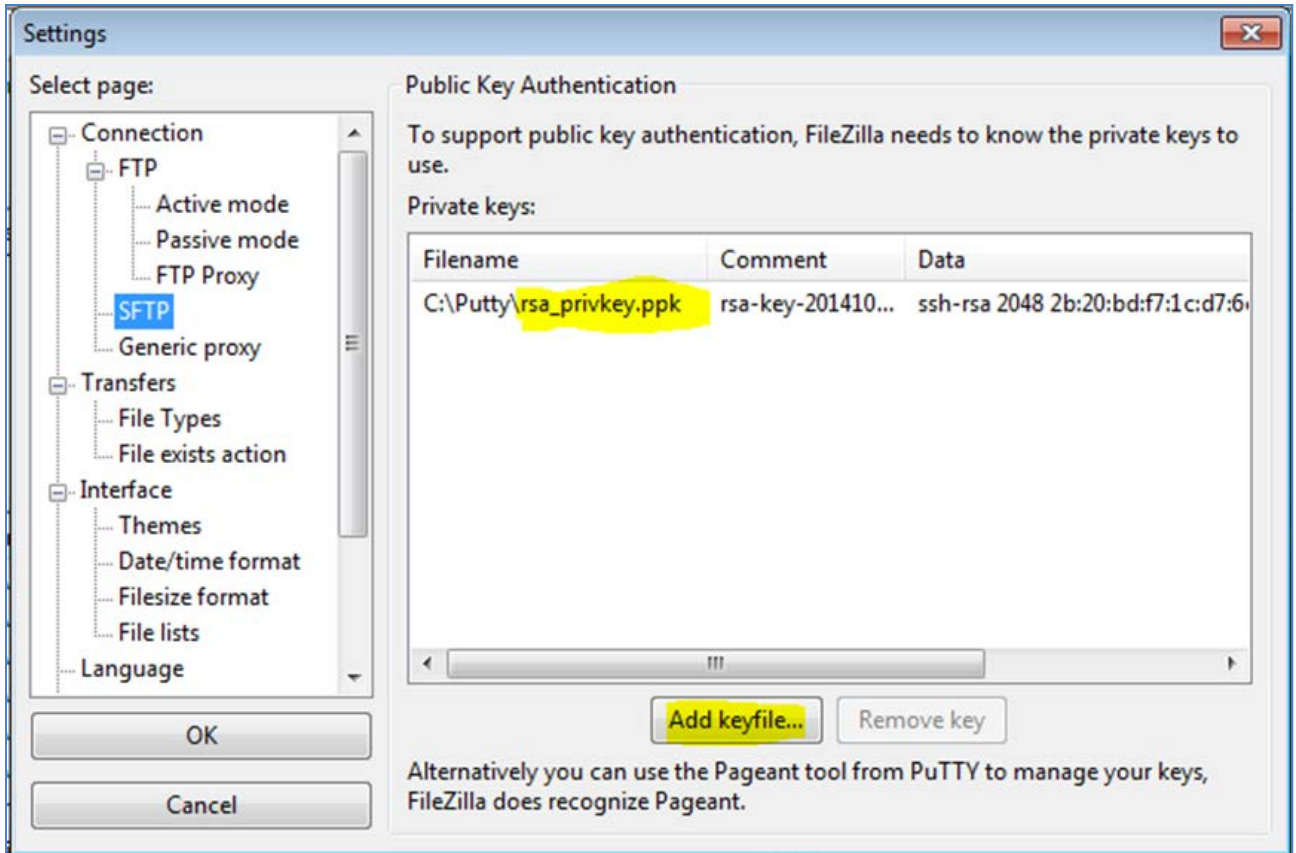


**Note:** In this example, you must select *Interactive* from the Logon Type drop-down list. This connection type only requires a user ID and uses a key pair (a public key and a private key) for connection authentication.

1. To add a private key to the FileZilla FTP client, click *Edit* from the menu bar and select *Settings*.



The Settings dialog opens, as shown in the following image.



2. Click *SFTP* in the left pane and then click *Add keyfile*.
3. Select the private key *rsa\_privkey.ppk*.